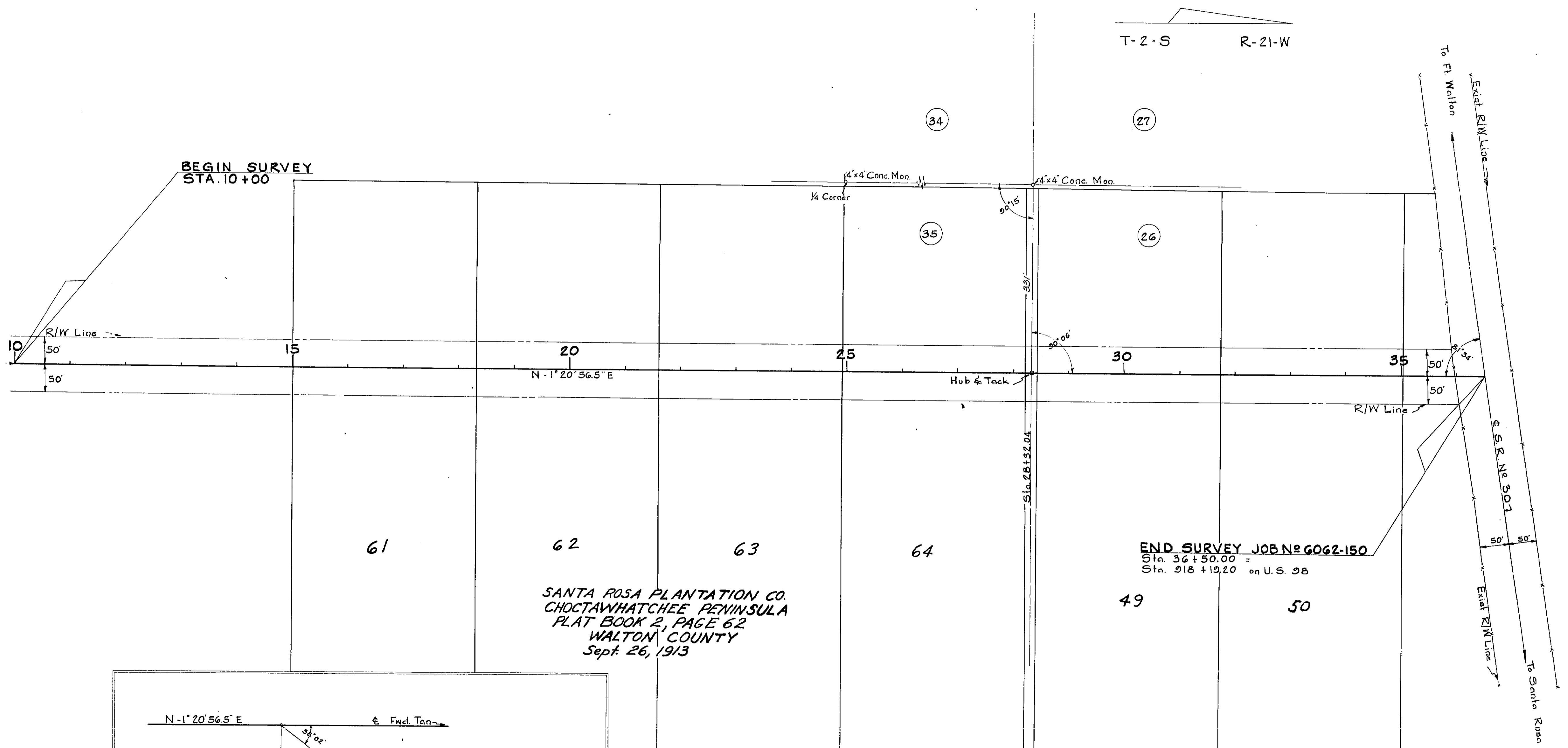


FED. ROAD DIV. No.	STATE	SEC. AND JOB No.	FISCAL YEAR	SHEET No.	TOTAL SHEETS
3	FLA.	6062-150	54	1	1

GULF OF MEXICO

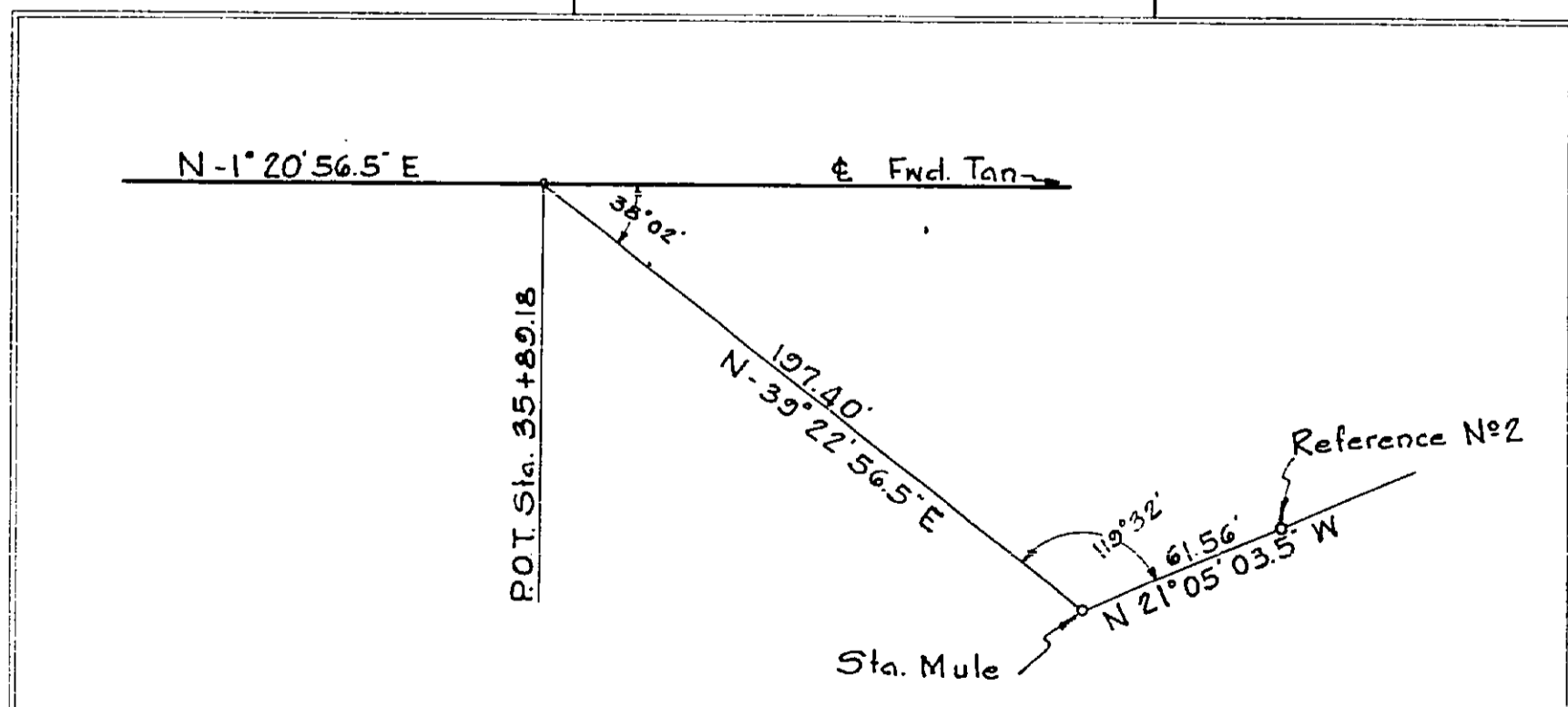
Approximately 500'



SANTA ROSA PLANTATION CO.  
CHOCTAWHATCHEE PENINSULA  
PLAT BOOK 2, PAGE 62  
WALTON COUNTY  
Sept. 26, 1913

END SURVEY JOB NO. 6062-150  
Sta. 36+50.00 =  
Sta. 218+12.20 on U.S. 98

REQUIRED R/W WIDTH  
50' Rt. & Lt. From Beginning to End of Job



AZIMUTH TIE  
Scale 1"=50'

STATE OF FLORIDA STATE ROAD DEPARTMENT				
<b>RIGHT OF WAY MAP</b>				
SECTION NO.		6062-150		
ROAD No. S-187		WALTON COUNTY		
SCALE 1"=100'	NAMES	DATE	APPROVED BY	
DRAWN	V.N.	11-18-54	S. P. [Signature]	
INDEXED			DIVISION ENGINEER	
REVISED	[Signature]	11-29-54	STATE HIGHWAY ENGINEER	
REVISED		12-14-54		