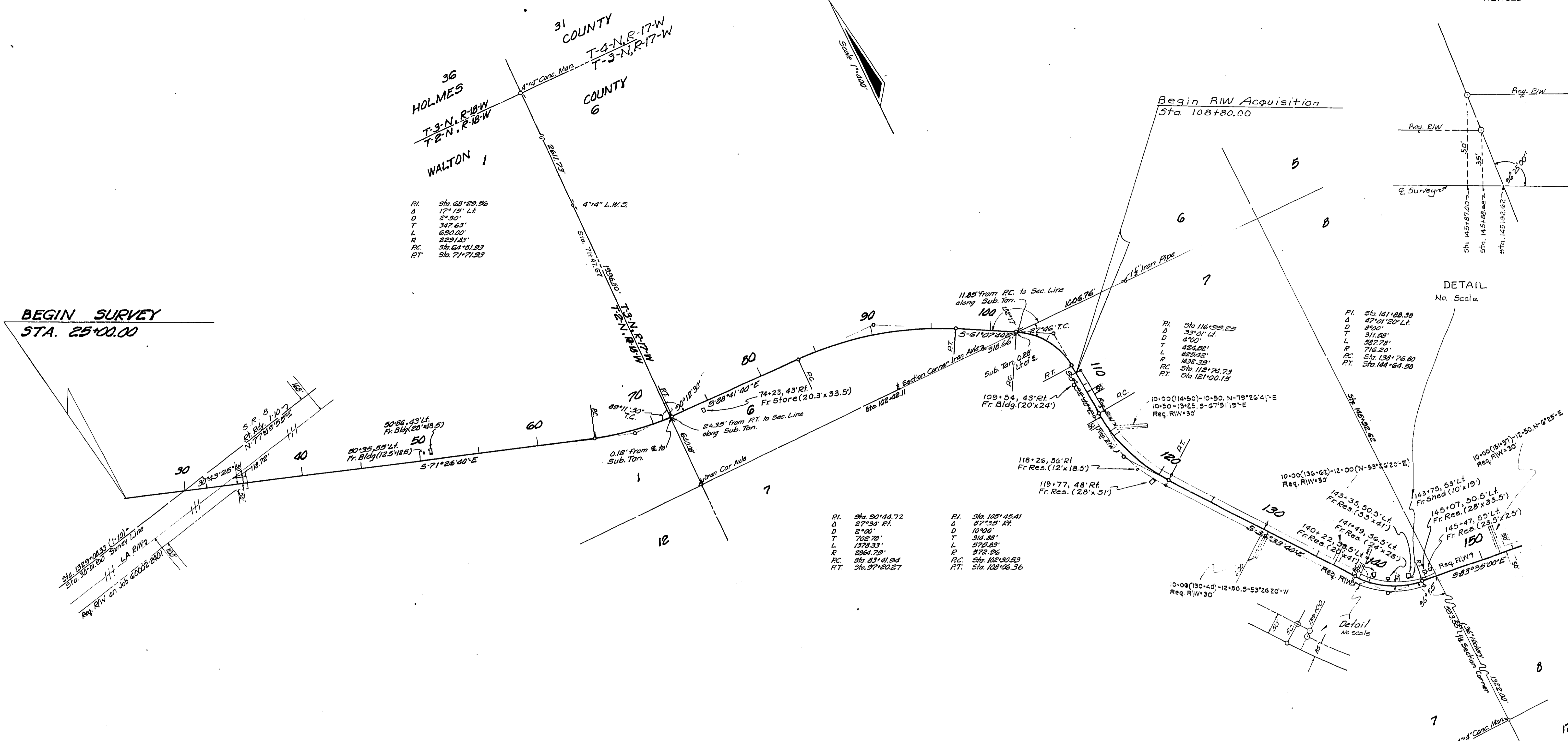
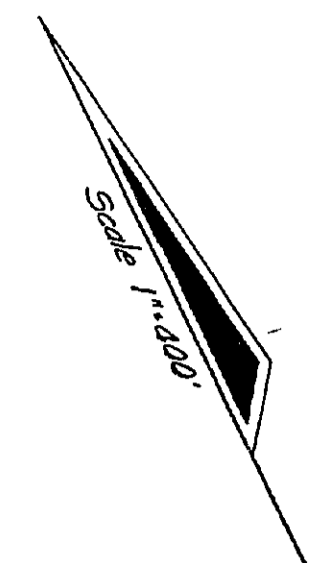


REVISED



PI	Sta. 68+29.56
A	12° 13' Lt.
D	2° 50'
T	347.63'
L	630.00'
R	2231.83'
PC	Sta. 64+01.93
PT	Sta. 71+71.93

PI	Sta. 116+09.23
A	33° 01' Lt.
D	4° 00'
T	424.52'
L	823.42'
R	1432.39'
PC	Sta. 112+74.73
PT	Sta. 121+00.13

PI	Sta. 141+08.38
A	47° 01' 20" Lt.
D	8° 00'
T	311.28'
L	587.78'
R	716.20'
PC	Sta. 138+76.80
PT	Sta. 144+64.58

PI	Sta. 90+44.72
A	27° 34' Rt.
D	2° 00'
T	702.78'
L	1378.33'
R	2264.79'
PC	Sta. 83+41.94
PT	Sta. 97+20.27

PI	Sta. 125+25.41
A	57° 35' Rt.
D	10° 00'
T	314.88'
L	572.83'
R	572.56'
PC	Sta. 122+00.23
PT	Sta. 128+06.36

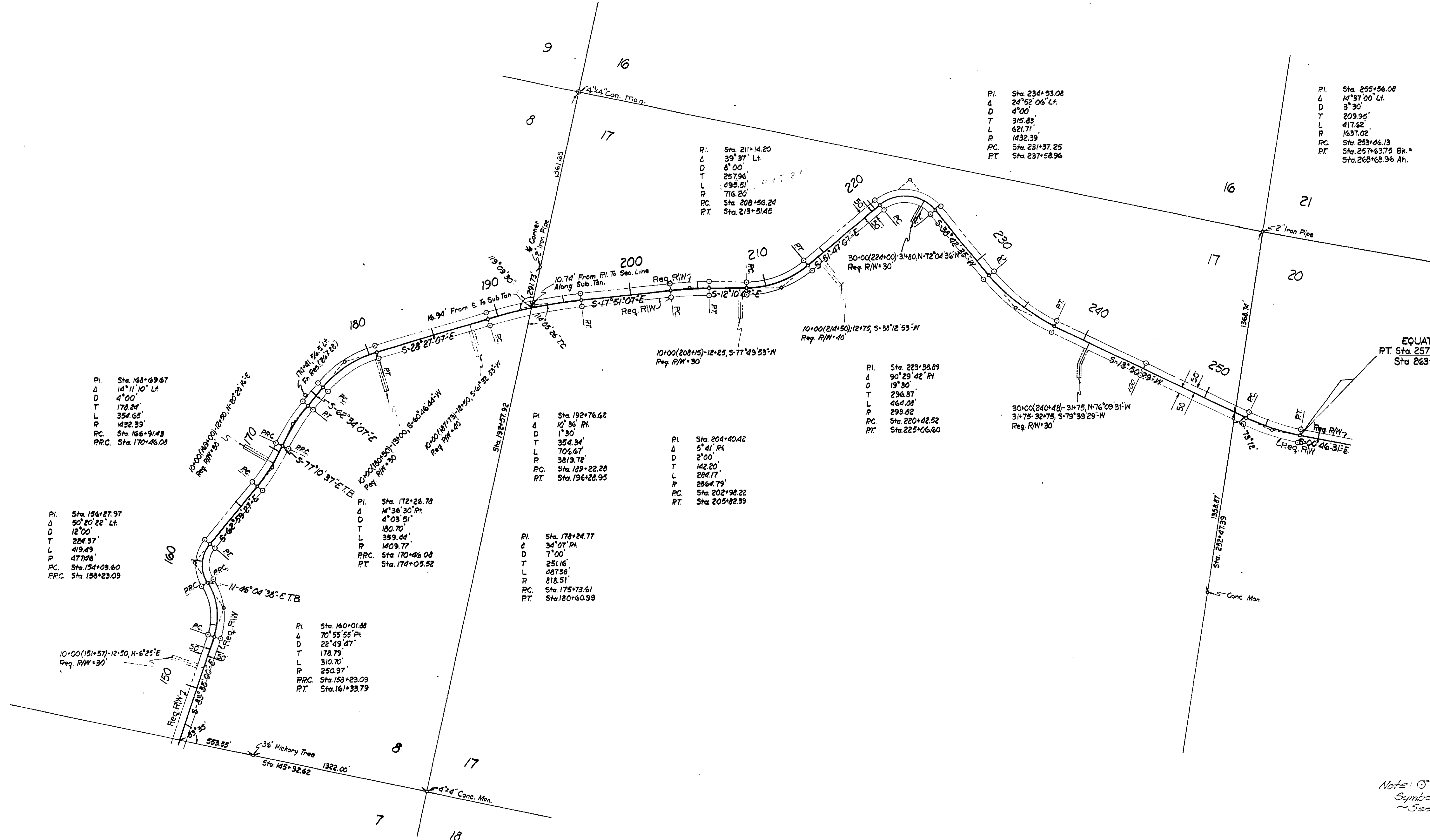
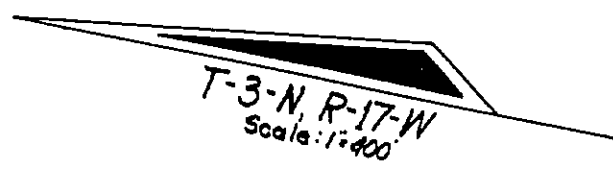
Note:  $\odot$  RIW Mark --  
 These symbols denote the location of underground Permanent RIW Markers, (PRM's). The PRM's are 3/8" copper coated rebar.  
 Above ground reference markers are located within 1' of the PRM's, where possible.  
 The location of the PRM's was established by field survey in June, 1974.  
 The original field notes are filed in the District 3 Office, State of Fla. Dept. of Trans., Chipley, Fla. Copies of these notes are filed in the office of RIW Engineering, State of Fla. Dept. of Trans., Tallahassee, Fla.

STATE OF FLORIDA STATE ROAD DEPARTMENT			
<b>RIGHT OF WAY MAP</b>			
STATE ROAD No. 5-181 WALTON COUNTY			
BY	DATE	APPROVED BY	DATE
TRACED	8/1/74	T. Beecher	6-29-74
CHECKED	H.B.S.		7-7-74
COMPARED			
INDEXED			
SECTION 60501-2603 SHEET 1 OF 1			

Filed for record in the Office of the Clerk of the Circuit Court for the County of Walton, State of Florida, in Book 1, Page 55 - 123 on the 18th day of September A.D. 1974.

FED. ROAD DIV. No.	STATE	PROJECT No.	FISCAL YEAR	SHEET No.
3	FLA.	60501-2603		2

REVISED



Note:  $\odot$  R/W Mark  
 Symbol For Permanent R/W Markers  
 See Sheet No. 1 For details

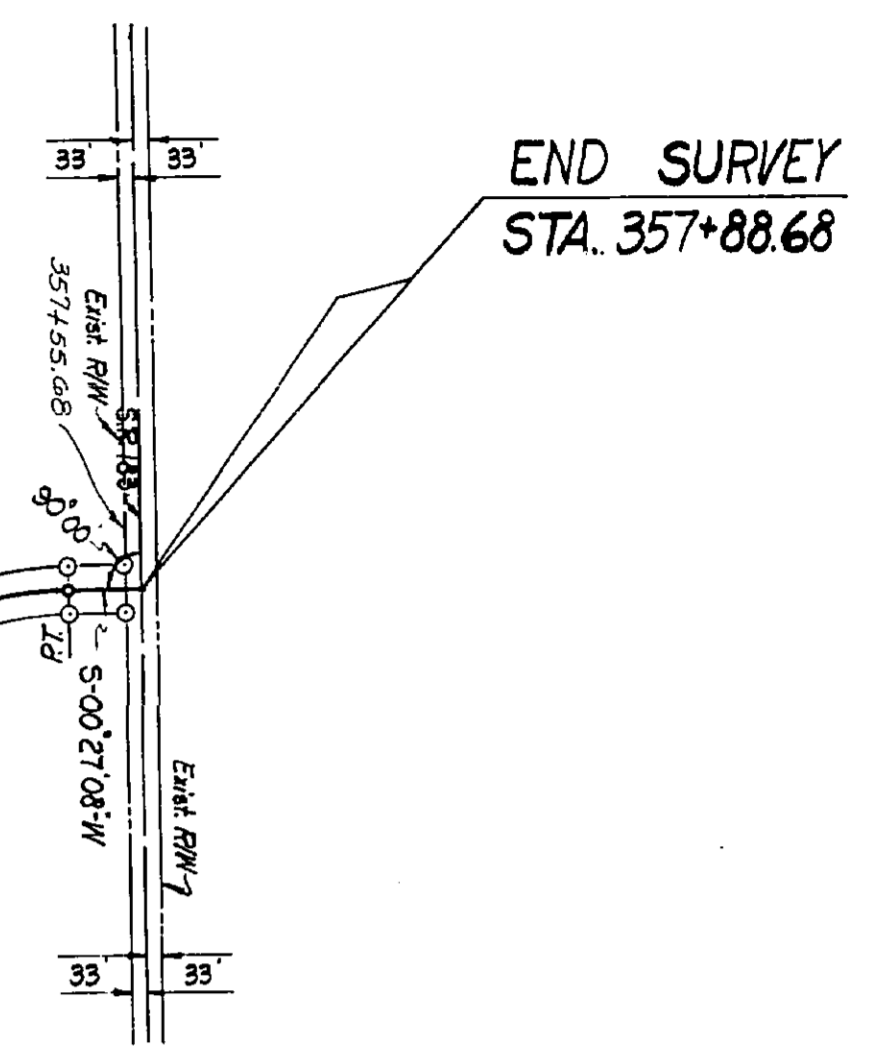
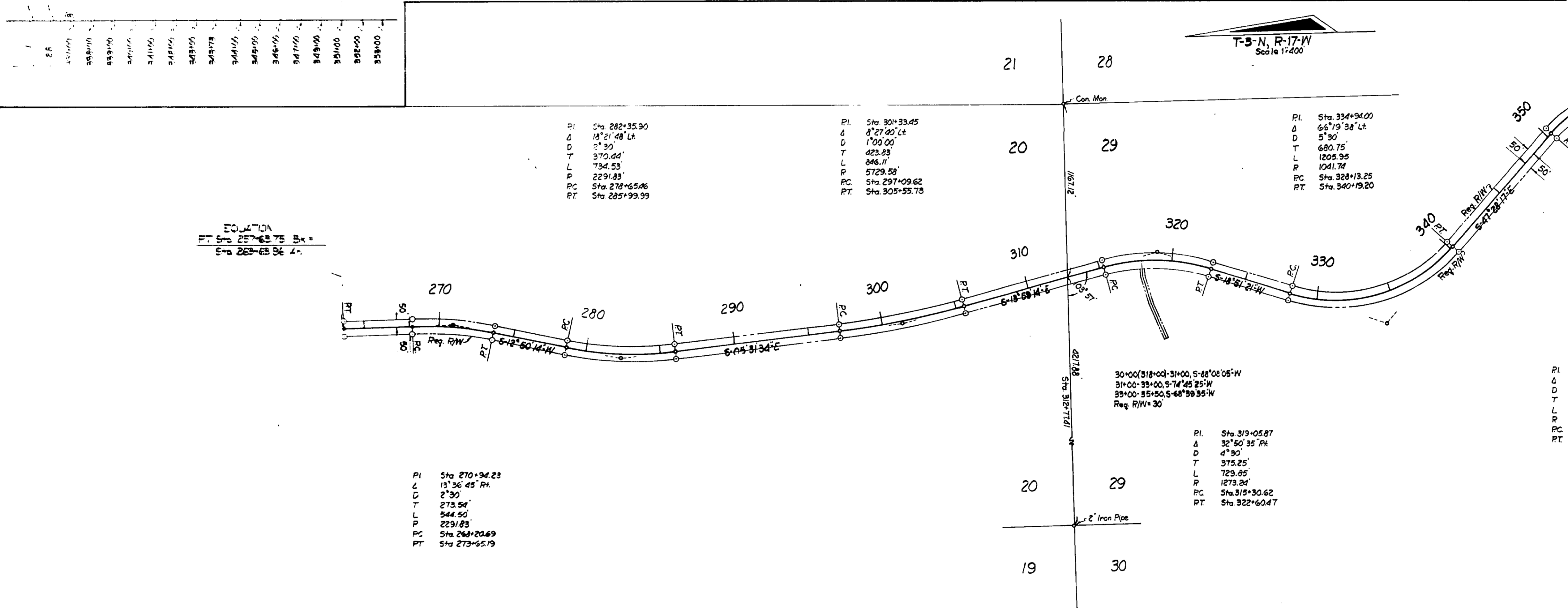
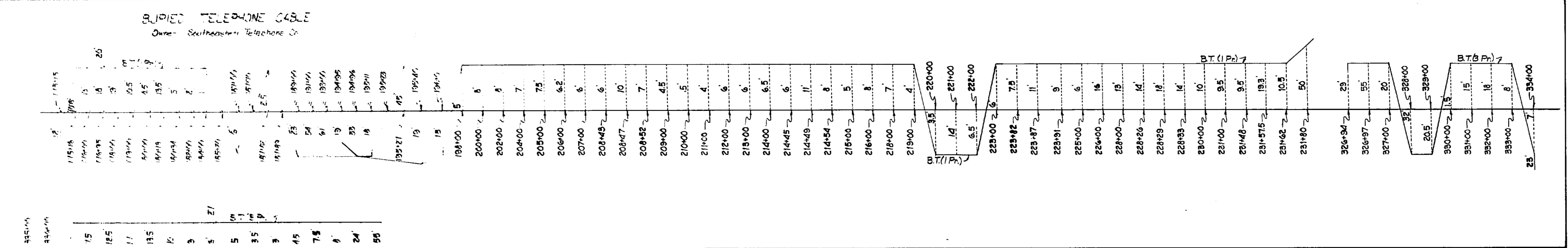
STATE OF FLORIDA DEPARTMENT OF TRANSPORTATION			
<b>RIGHT OF WAY MAP</b>			
STATE ROAD No. 5-181		WALTON COUNTY	
BY	DATE	APPROVED BY	DATE
DRAWN		<i>E. Wheeler</i>	12-71
TRACED	LLC	9-10-71	DISTRICT ENGINEER
CHECKED		<i>Thomas Oliver</i>	1-6-72
COMPARED			ENGINEER OF RIGHT OF WAY
INDEXED			STATE HIGHWAY ENGINEER

REVISION	BY	DATE

SECTION. 60501-2603 SHEET 2 OF

FROM I-10 THROUGH DOUGLAS CROSS ROADS TO S.R.181

REVISED



ADJUNCTION  
 PT Sta 257+63.75 Bx +  
 Sta 262+63.96 L.

PI Sta 270+94.23  
 Δ 13°36'45" R  
 D 2°30'  
 T 273.58'  
 L 544.50'  
 P 2291.83'  
 PC Sta 269+20.69  
 PT Sta 273+65.19

PI Sta 282+35.90  
 Δ 13°21'48" Lt  
 D 2°30'  
 T 370.00'  
 L 794.53'  
 P 2291.83'  
 PC Sta 278+65.26  
 PT Sta 285+99.99

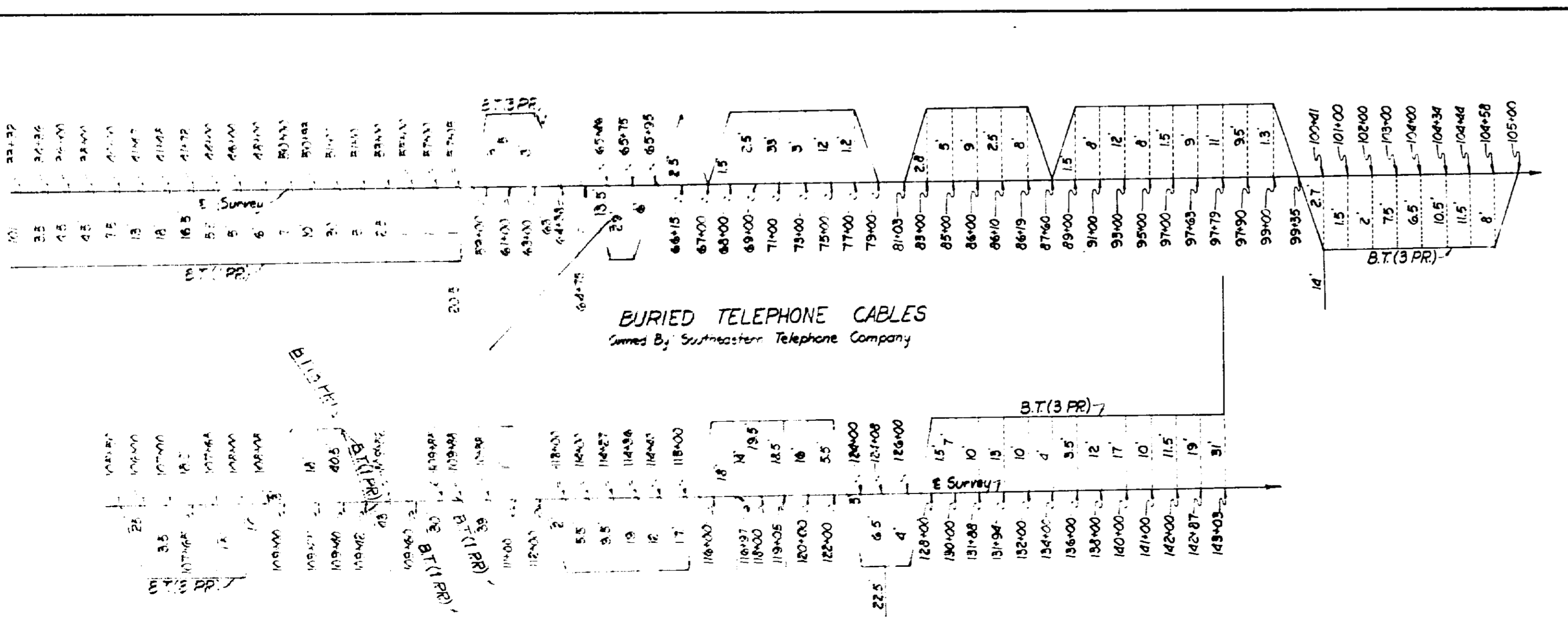
PI Sta 301+33.45  
 Δ 8°27'40" Lt  
 D 1°00'00"  
 T 423.83'  
 L 846.11'  
 P 5729.58'  
 PC Sta 297+09.62  
 PT Sta 305+53.78

PI Sta 334+94.00  
 Δ 66°19'38" Lt  
 D 5°30'  
 T 680.75'  
 L 1205.95'  
 P 1041.74'  
 PC Sta 324+13.25  
 PT Sta 340+19.20

30+00-31+00-31+00, S-88°08'05"-W  
 31+00-32+00-32+00, S-74°45'25"-W  
 32+00-33+00-33+00, S-68°39'35"-W  
 Req. R/W=30

PI Sta 319+05.87  
 Δ 32°50'35" R  
 D 4°30'  
 T 375.25'  
 L 723.85'  
 P 1273.24'  
 PC Sta 315+30.62  
 PT Sta 322+60.47

PI Sta 353+52.70  
 Δ 47°55'25" R  
 D 7°51'18"  
 T 324.18'  
 L 610.11'  
 P 729.43'  
 PC Sta 350+28.52  
 PT Sta 356+38.63



BURIED TELEPHONE CABLES  
 Owned By Southeastern Telephone Company

UTILITY POLES											
POWER						TELEPHONE					
Station	Rt.	Lt.	Station	Rt.	Lt.	Station	Rt.	Lt.	Station	Rt.	Lt.
50+51		42'	142+83	47'		182+48	30'		82+02	37'	
53+95	48'		143+00		32'	183+97	34'		84+26	23'	
57+21	47'		144+05		35'	190+03	36'		175+16	13'	
60+49	45'		144+45		34.5'	194+77	19'		176+95	39'	
64+03	43'		145+67	32'		218+63	15'		194+95	16'	
62+02	37'		146+48	38'		222+48	14'				
66+01		33.5'	147+04	44'		307+58	40'				
118+85	25.5'		172+69	24'							
123+07	31'		174+50	27'							
126+46	47'		175+90	23'							
134+42	35'		176+44	32'							
134+51	39'		178+98	43'							

Owner: Choctawhatchee Elec. Co. op

Owner: Southeastern Telephone Co.

Note: ◯ R/W Mkr--  
 Symbol for Permanent R/W Markers  
 - See Sheet No. 1 for Details -

STATE OF FLORIDA  
 DEPARTMENT OF TRANSPORTATION  
**RIGHT OF WAY MAP**  
 STATE ROAD No. S-181 WALTON COUNTY

DRAWN	BY	DATE	APPROVED BY	DATE
TRACED	I.L.C.	9-10-71	<i>Ed Lee</i>	
CHECKED			<i>Thomas C. ...</i>	
COMPALED				
INDEXED				

SECTION: 60501-2603 SHEET 3 OF