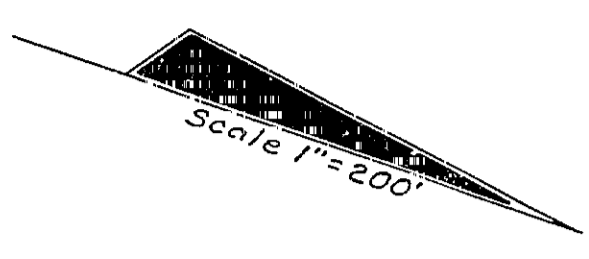


FED. ROAD DIV. No.	STATE	SEC. AND JOB No.	FISCAL YEAR	SHEET No.	TOTAL SHEETS
3	FLA.	49501-2601		1	1

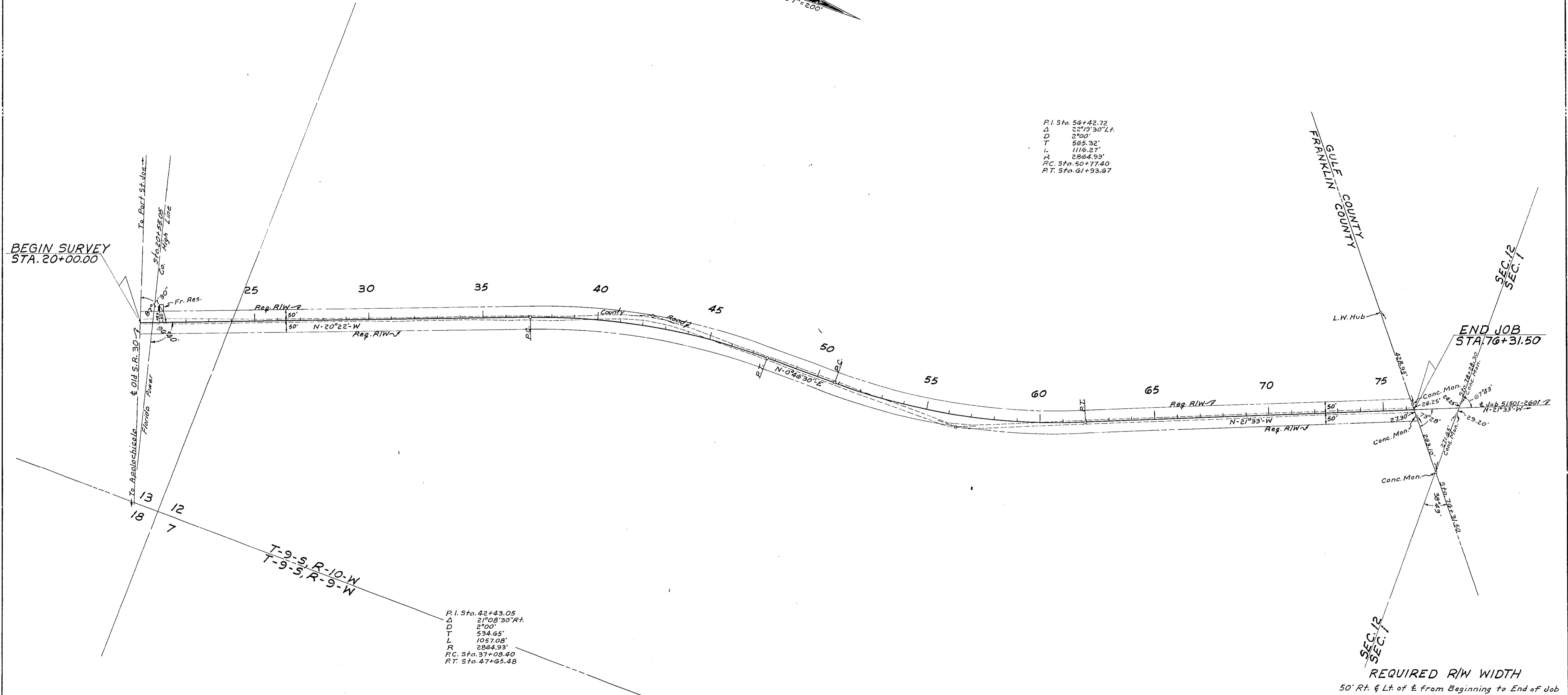


P.I. Sta. 56+42.72  
 $\Delta$  2°19'30" Lt.  
D 2°00'  
T 565.32'  
L 1116.27'  
R 2864.93'  
P.C. Sta. 50+17.40  
P.T. Sta. 61+93.67

P.I. Sta. 42+43.05  
 $\Delta$  2°08'30" Rt.  
D 2°00'  
T 534.65'  
L 1057.08'  
R 2864.93'  
P.C. Sta. 37+08.00  
P.T. Sta. 47+65.48

BEGIN SURVEY  
 STA. 20+00.00

END JOB  
 STA. 76+31.50



REQUIRED R/W WIDTH  
 50' Rt. & Lt. of  $\pm$  from Beginning to End of Job

STATE OF FLORIDA STATE ROAD DEPARTMENT			
<b>RIGHT OF WAY MAP</b>			
STATE ROAD NO. 5-383 FRANKLIN COUNTY			
BY	DATE	APPROVED BY	DATE
DRAWN		<i>S. P. Diet</i>	
TRACED	S.C. 8-18-60		DISTRICT ENGINEER
CHECKED			
COMPARED		<i>Walter Buehler</i>	ENGINEER OF RIGHTS OF WAY 9-23-60
INDEXED			STATE ROAD ENGINEER
REVISION	BY	DATE	SECTION 49501-2601 SHEET 1 OF 1