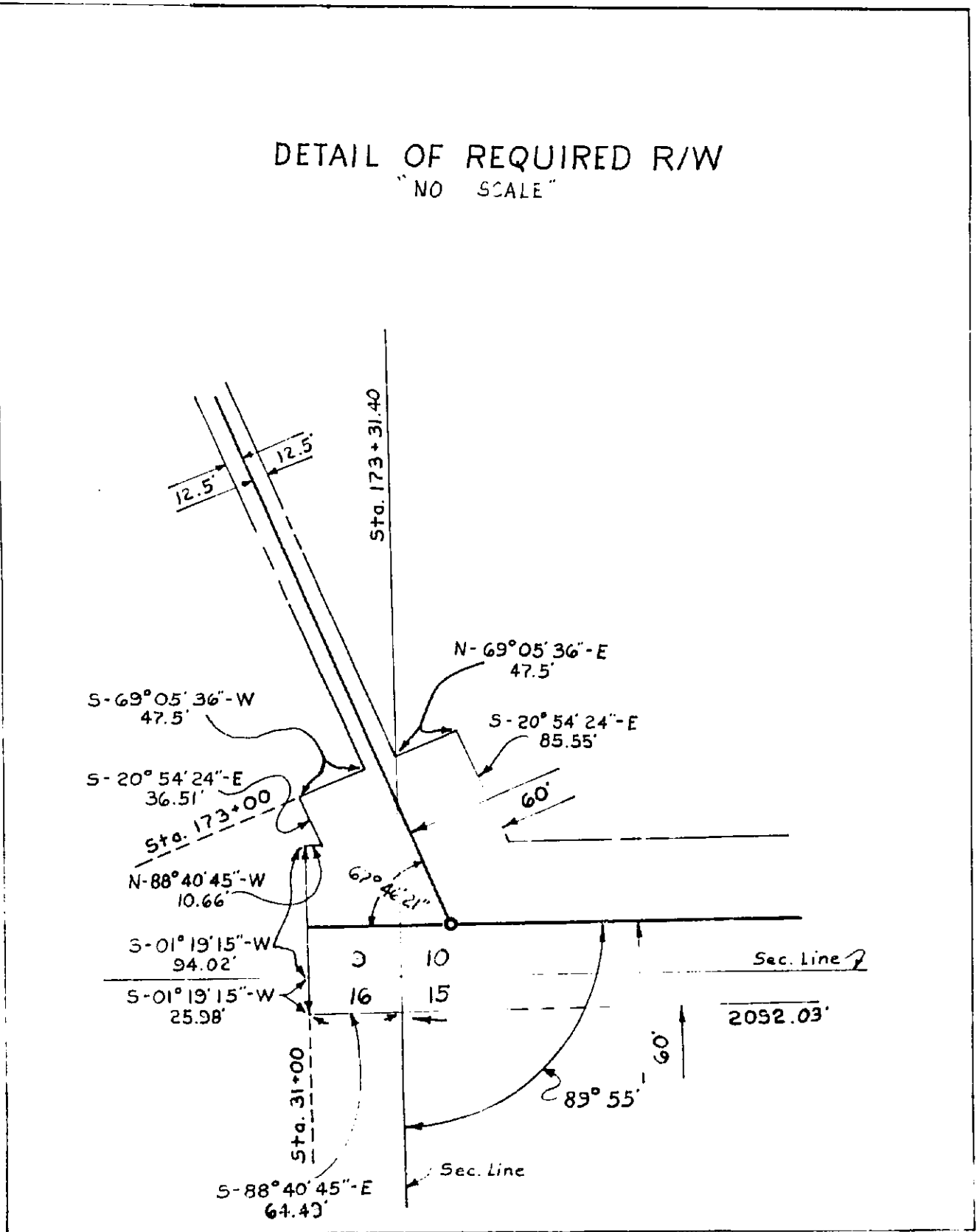
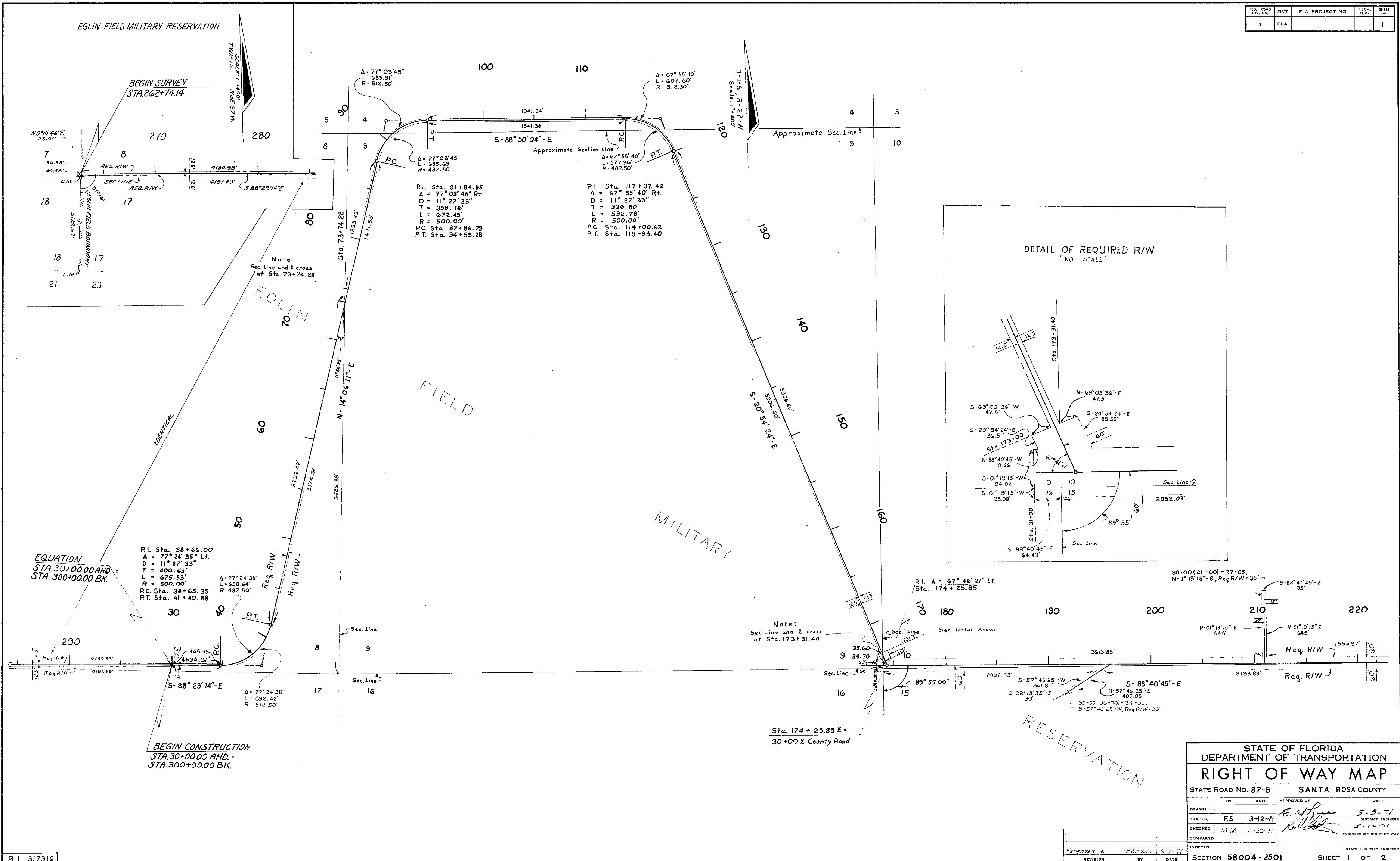


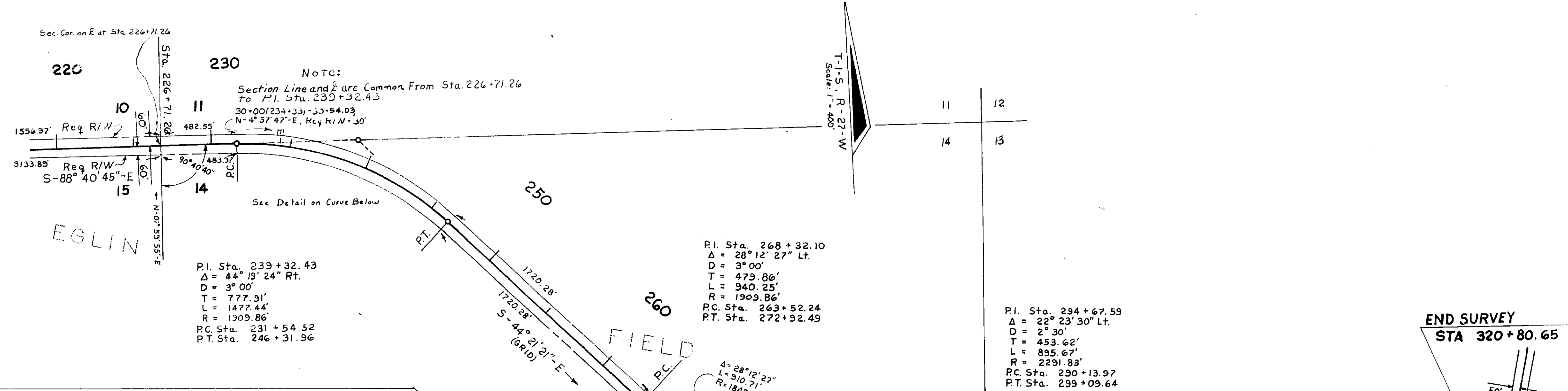
FED. ROAD DIV. No.	STATE	F A PROJECT NO.	FISCAL YEAR	SHEET No.
3	FLA.			1



STATE OF FLORIDA DEPARTMENT OF TRANSPORTATION			
RIGHT OF WAY MAP			
STATE ROAD NO. 87-B		SANTA ROSA COUNTY	
BY	DATE	APPROVED BY	DATE
DRAWN		<i>E. J. ...</i>	5-5-71
TRACED	F.S. 3-12-71		DISTRICT ENGINEER
CHECKED	M.W. 4-20-71	<i>M.W. ...</i>	5-12-71
COMPARED			ENGINEER OF RIGHT OF WAY
INDEXED			STATE HIGHWAY ENGINEER
Extended by F.S. 3-12-71		SECTION 58004-2501 SHEET 1 OF 2	

B.I. 317316

FROM CHOCTAW FIELD TO S.R. 87

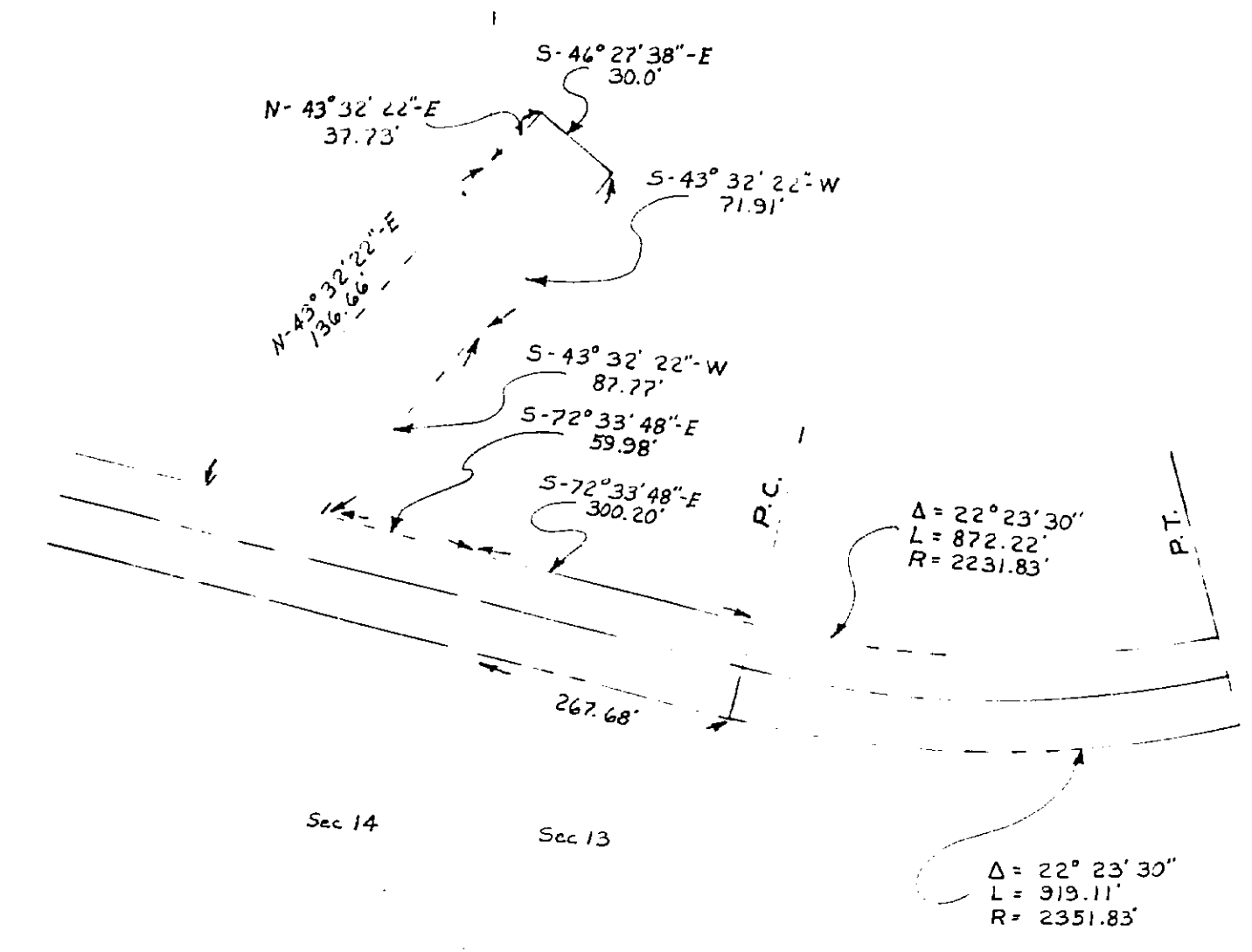
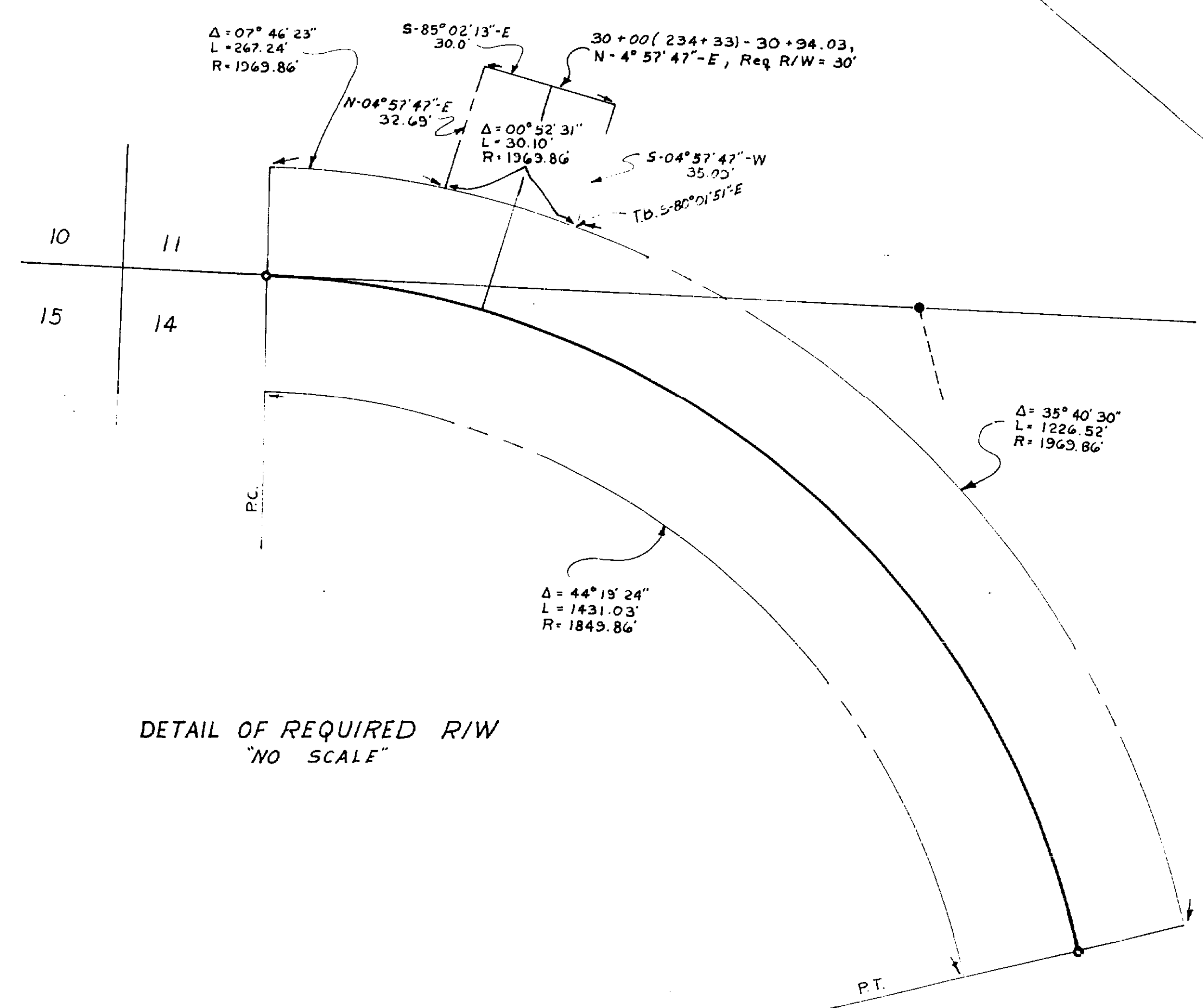


Note:
 Section Line and $\frac{1}{2}$ are Common From Sta. 226+71.26
 To P.I. Sta. 233+32.43
 $30+00(234+33)-30+94.03$
 $N-4^{\circ}57'47''-E$, Req. R/W = 30'

P.I. Sta. 239+32.43
 $\Delta = 44^{\circ}19'24''$ Rt.
 $D = 3^{\circ}00'$
 $T = 777.91'$
 $L = 1477.44'$
 $R = 1909.86'$
 P.C. Sta. 231+54.52
 P.T. Sta. 246+31.96

P.I. Sta. 268+32.10
 $\Delta = 28^{\circ}12'27''$ Lt.
 $D = 3^{\circ}00'$
 $T = 479.86'$
 $L = 940.25'$
 $R = 1909.86'$
 P.C. Sta. 263+52.24
 P.T. Sta. 272+92.49

P.I. Sta. 294+67.59
 $\Delta = 22^{\circ}23'30''$ Lt.
 $D = 2^{\circ}30'$
 $T = 453.62'$
 $L = 895.67'$
 $R = 2291.83'$
 P.C. Sta. 290+13.97
 P.T. Sta. 299+09.64



STATE OF FLORIDA DEPARTMENT OF TRANSPORTATION			
RIGHT OF WAY MAP			
STATE ROAD No. 87-B		SANTA ROSA COUNTY	
BY	DATE	APPROVED BY	DATE
DRAWN		<i>E. W. P.</i>	5-5-71
TRACED	F.S. 3-12-71	<i>[Signature]</i>	DISTRICT ENGINEER
CHECKED		<i>[Signature]</i>	5-12-71
COMPARED			ENGINEER OF RIGHT OF WAY
INDEXED			STATE HIGHWAY ENGINEER
REVISION	BY	DATE	SECTION 58004-2501 SHEET 2 OF 2