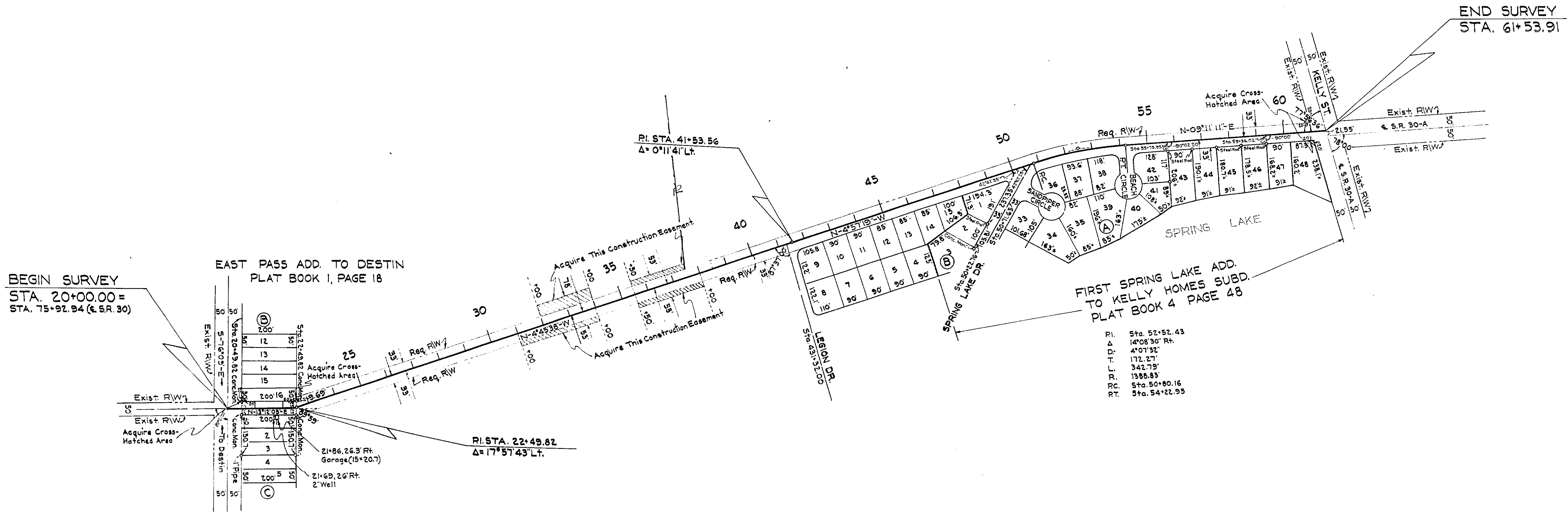


T-2-5 R-22-W
SCALE 1"=200'



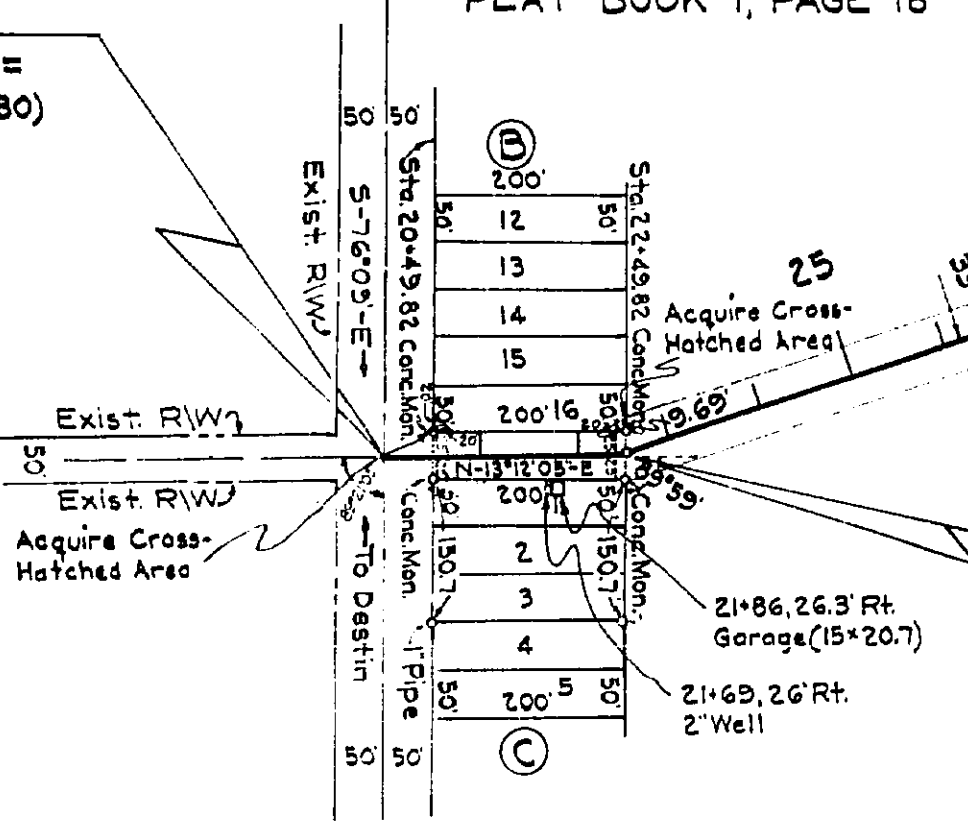
BEGIN SURVEY
STA. 20+00.00 =
STA. 75+92.94 (S.R. 30)

EAST PASS ADD. TO DESTIN
PLAT BOOK 1, PAGE 18

END SURVEY
STA. 61+53.91

FIRST SPRING LAKE ADD.
TO KELLY HOMES SUBD.
PLAT BOOK 4 PAGE 48

PI. Sta. 52+52.43
A. 14°08'30" Rt.
D. 4°07'32"
T. 172.27'
L. 342.79'
P. 1386.83'
P.C. Sta. 50+80.16
P.T. Sta. 54+22.95

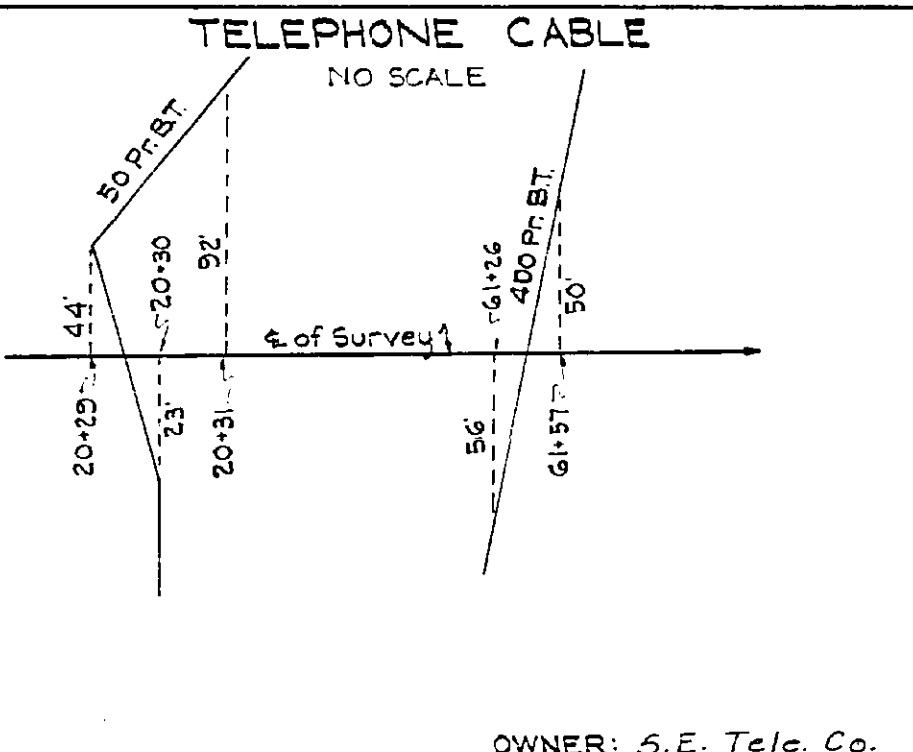
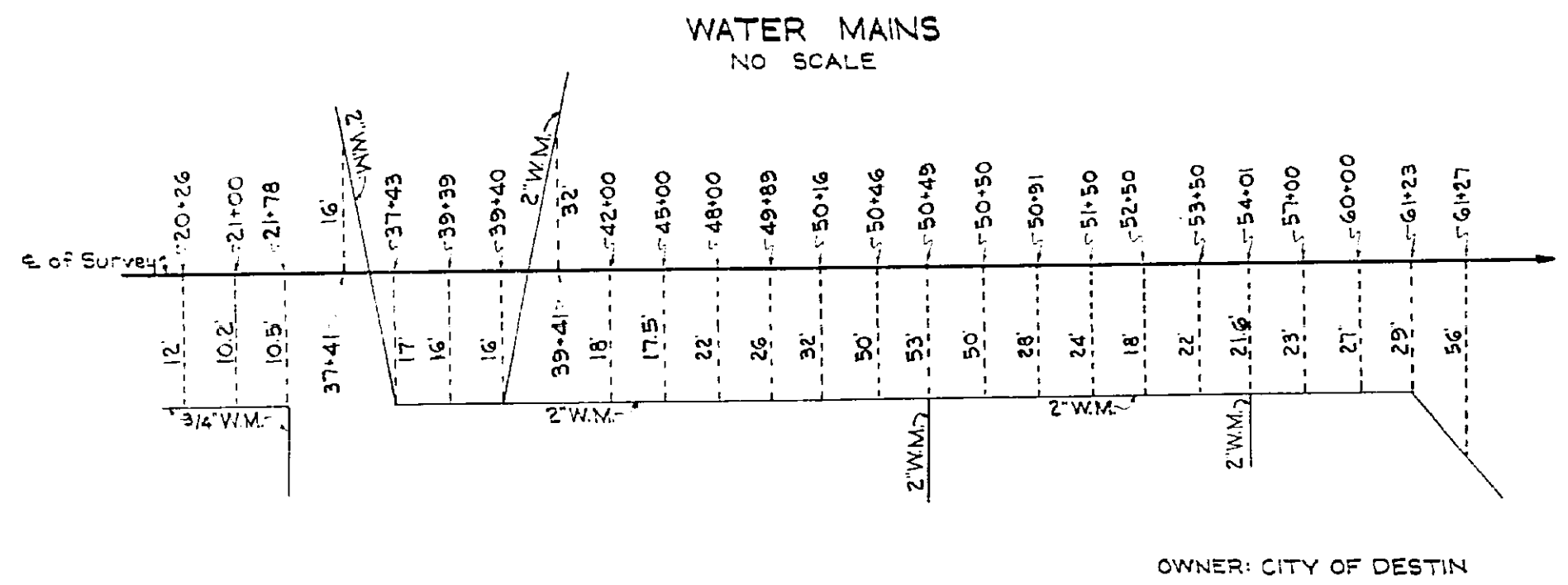


PI. STA. 22+49.82
Δ = 17°57'43" LT.

PI. STA. 41+53.56
Δ = 0°11'41" LT.

UTILITY POLES					
TELEPHONE			POWER		
STA.	LT.	RT.	STA.	LT.	RT.
22+54	17		22+54	17	
22+54.5		37	22+54.5		37
37+43	20		25+99	17	
38+73	19		29+34	19	
40+70	20		32+69	20	
42+72	20		36+03	20	
46+07	20		37+43	20	
49+41	19		38+61		33
52+70	33		38+73	19	
54+20	25		40+70	20	
55+53	24		42+72	20	
57+58	27		46+07	20	
59+36	28		49+41	19	
			52+70	33	
			54+20	25	
			55+53	24	
			59+00	26	

OWNER: S.E. Tele. Co. OWNER: GULF POWER CO.



STATE OF FLORIDA
DEPARTMENT OF TRANSPORTATION
RIGHT OF WAY MAP
STATE ROAD No. 5-30-C OKALOOSA COUNTY

DRAWN	By	DATE	APPROVED BY	DATE
TRACED	Q.L.K.	2-18-70	<i>[Signature]</i>	3-27-70
CHECKED			<i>[Signature]</i>	4-9-70
COMPARED				
INDEXED				

SECTION 57600-2603 SHEET 1 OF 1

B1 No 327234