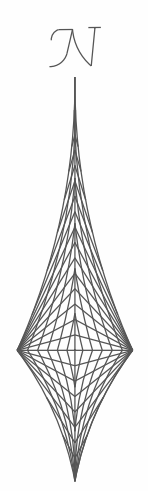
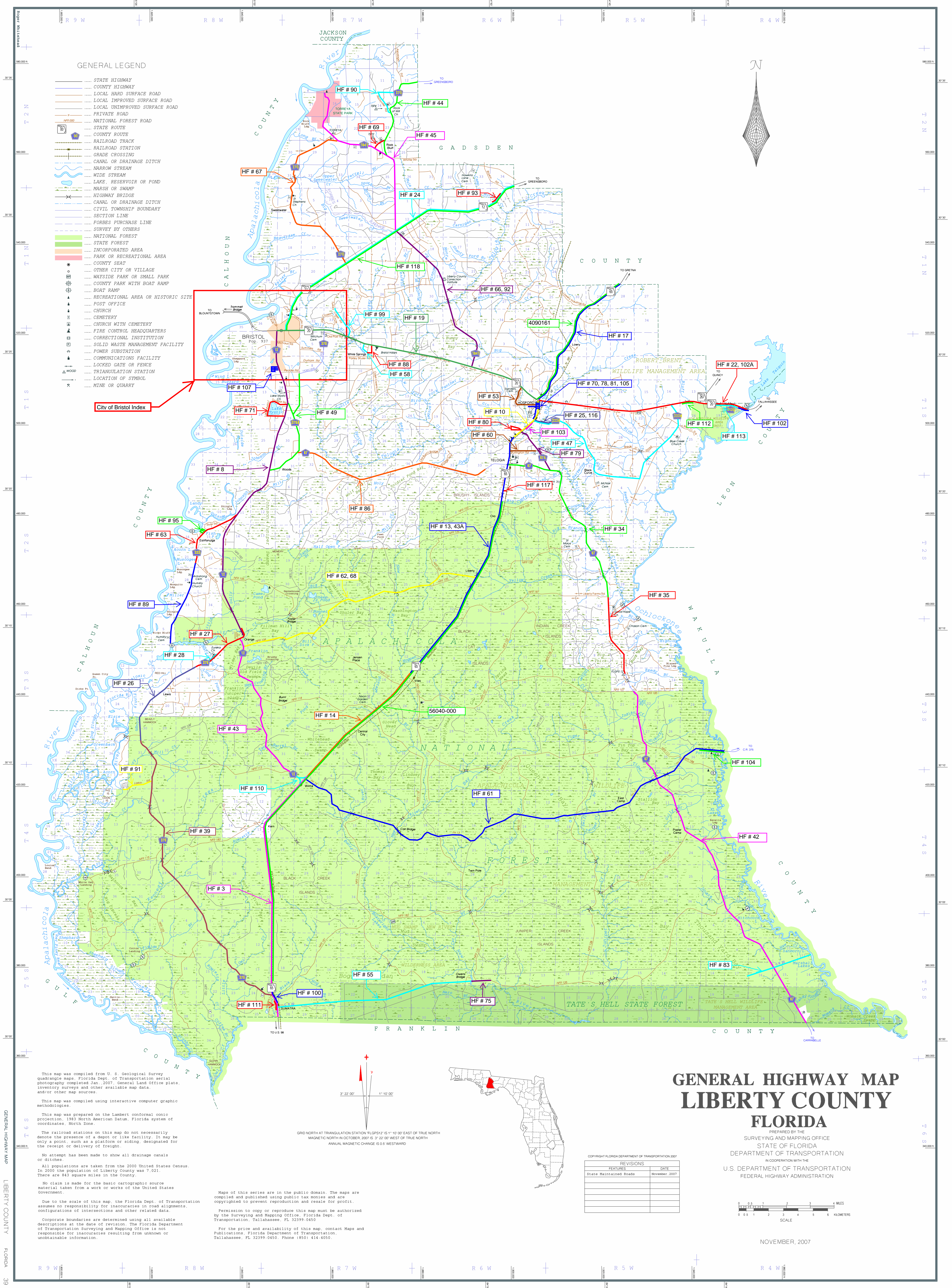


**GENERAL LEGEND**

- STATE HIGHWAY
- COUNTY HIGHWAY
- LOCAL HARD SURFACE ROAD
- LOCAL IMPROVED SURFACE ROAD
- LOCAL UNIMPROVED SURFACE ROAD
- PRIVATE ROAD
- NATIONAL FOREST ROAD
- STATE ROUTE
- COUNTY ROUTE
- RAILROAD TRACK
- RAILROAD STATION
- GRADE CROSSING
- CANAL OR DRAINAGE DITCH
- NARROW STREAM
- WIDE STREAM
- LAKE, RESERVOIR OR POND
- MARSH OR SWAMP
- HIGHWAY BRIDGE
- CANAL OR DRAINAGE DITCH
- CIVIL TOWNSHIP BOUNDARY
- SECTION LINE
- FORBES PURCHASE LINE
- SURVEY BY OTHERS
- NATIONAL FOREST
- STATE FOREST
- INCORPORATED AREA
- PARK OR RECREATIONAL AREA
- COUNTY SEAT
- OTHER CITY OR VILLAGE
- WAYSIDE PARK OR SMALL PARK
- COUNTY PARK WITH BOAT RAMP
- BOAT RAMP
- RECREATIONAL AREA OR HISTORIC SITE
- POST OFFICE
- CHURCH
- CEMETERY
- CHURCH WITH CEMETERY
- FIRE CONTROL HEADQUARTERS
- CORRECTIONAL INSTITUTION
- SOLID WASTE MANAGEMENT FACILITY
- POWER SUBSTATION
- COMMUNICATIONS FACILITY
- LOCKED GATE OR FENCE
- TRIANGULATION STATION
- LOCATION OF SYMBOL
- MINE OR QUARRY



City of Bristol Index



This map was compiled from U. S. Geological Survey quadrangle maps, Florida Dept. of Transportation aerial photography completed Jan. 2007, General Land Office plats, inventory surveys and other available map data, and/or other map sources.

This map was compiled using interactive computer graphic methodologies.

This map was prepared on the Lambert conformal conic projection, 1883 North American Datum, Florida system of coordinates, North Zone.

The railroad stations on this map do not necessarily denote the presence of a depot or like facility. It may be only a point, such as a platform or siding, designated for the receipt or delivery of freight.

No attempt has been made to show all drainage canals or ditches.

All populations are taken from the 2000 United States Census. In 2000 the population of Liberty County was 7,021. There are 843 square miles in the County.

No claim is made for the basic cartographic source material taken from a work or works of the United States Government.

Due to the scale of this map, the Florida Dept. of Transportation assumes no responsibility for inaccuracies in road alignments, configurations of intersections and other related data.

Corporate boundaries are determined using all available descriptions at the date of revision. The Florida Department of Transportation Surveying and Mapping Office is not responsible for inaccuracies resulting from unknown or undetectable information.

Maps of this series are in the public domain. The maps are compiled and published using public tax monies and are copyrighted to prevent reproduction and resale for profit.

Permission to copy or reproduce this map must be authorized by the Surveying and Mapping Office, Florida Dept. of Transportation, Tallahassee, FL 32399-0450.

For the price and availability of this map, contact Maps and Publications, Florida Department of Transportation, Tallahassee, FL 32399-0450. Phone (850) 414-4050.

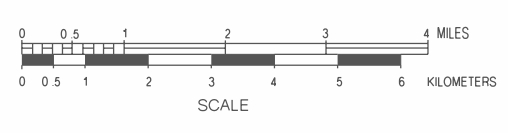
GRID NORTH AT TRIANGULATION STATION "FLGPS12" IS 1° 10' 00" EAST OF TRUE NORTH  
 MAGNETIC NORTH IN OCTOBER, 2007 IS 3° 22' 00" WEST OF TRUE NORTH  
 ANNUAL MAGNETIC CHANGE IS 0.6 WESTWARD



REVISIONS	
FEATURES	DATE
State Maintained Roads	November, 2007

# GENERAL HIGHWAY MAP LIBERTY COUNTY FLORIDA

PREPARED BY THE  
SURVEYING AND MAPPING OFFICE  
STATE OF FLORIDA  
DEPARTMENT OF TRANSPORTATION  
IN COOPERATION WITH THE  
U.S. DEPARTMENT OF TRANSPORTATION  
FEDERAL HIGHWAY ADMINISTRATION



NOVEMBER, 2007