

**REQUIRED R/W WIDTHS**  
 35' Lt From Sta. 10+00 to Sta. 34+52.08  
 Varies 316' to 362' Rt. From Sta. 10+00 to Sta. 14+07.92  
 35' Rt. From Sta. 14+07.92 to Sta. 34+52.08  
 40' Lt. From Sta. 34+52.08 to Sta. 241+57  
 40' Rt. From Sta. 34+52.08 to Sta. 246+11.15  
 35' Lt. From Sta. 241+57 to Sta. 246+11.15

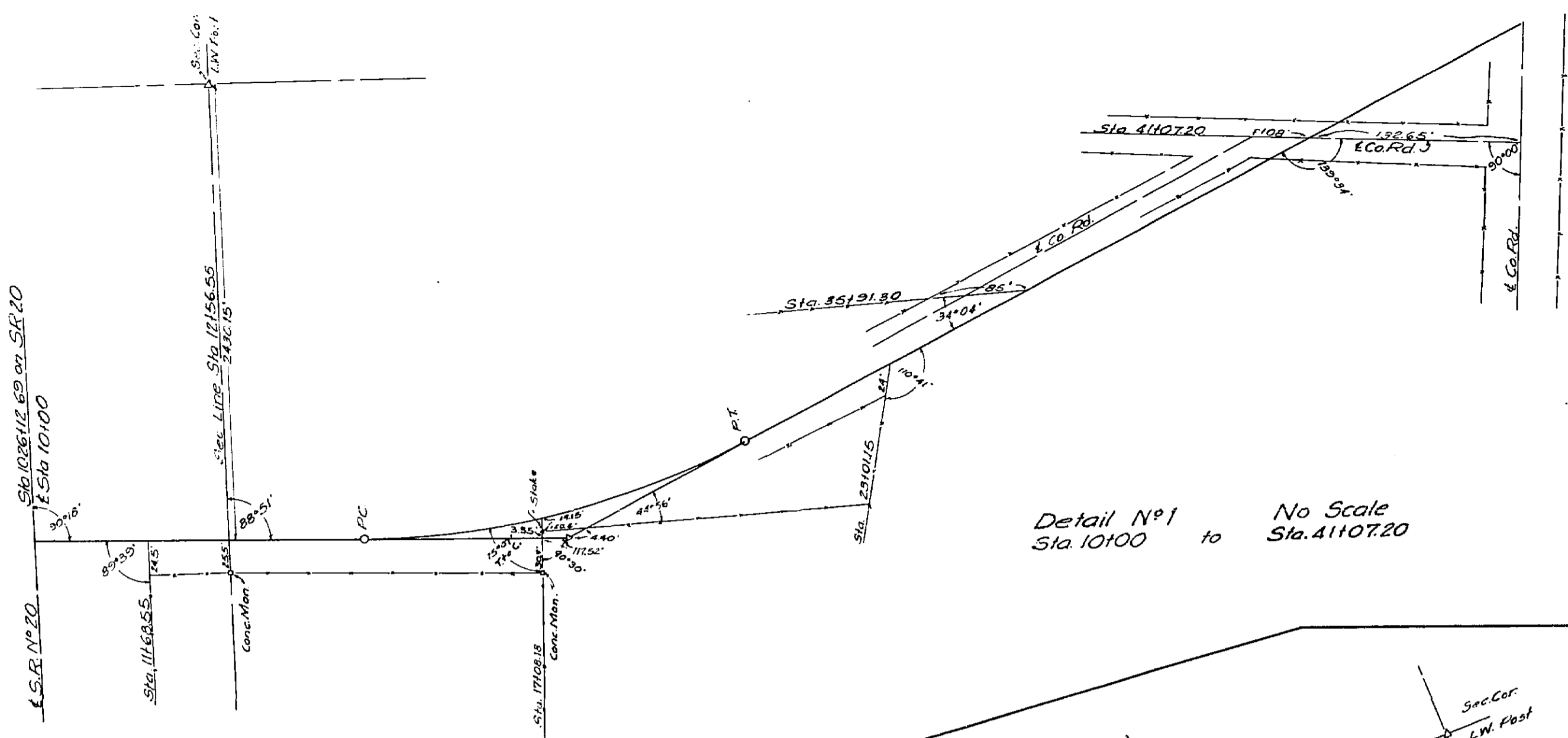
STATE OF FLORIDA STATE ROAD DEPARTMENT		
<b>RIGHT OF WAY MAP</b>		
SECTION No. 565A-150		
ROAD No. (3-377) S-379 LIBERTY COUNTY		
SCALE 1" = 100'	NAMES	DATES
DRAWN	JGP	3-25-51
TRACED	JGP	3-27-51
INDEXED		
REVISED	pit	6-3-53
REVISED	pit	6-12-53
REVISED	pit	8-3-53
REVISED	pit	10-2-53
REVISED	pit	2-4-54
REVISED	pit	2-10-54

**END JOB**  
 STA. 216+11.15 STA.  
 1105+19.00 on S.R. No. 20

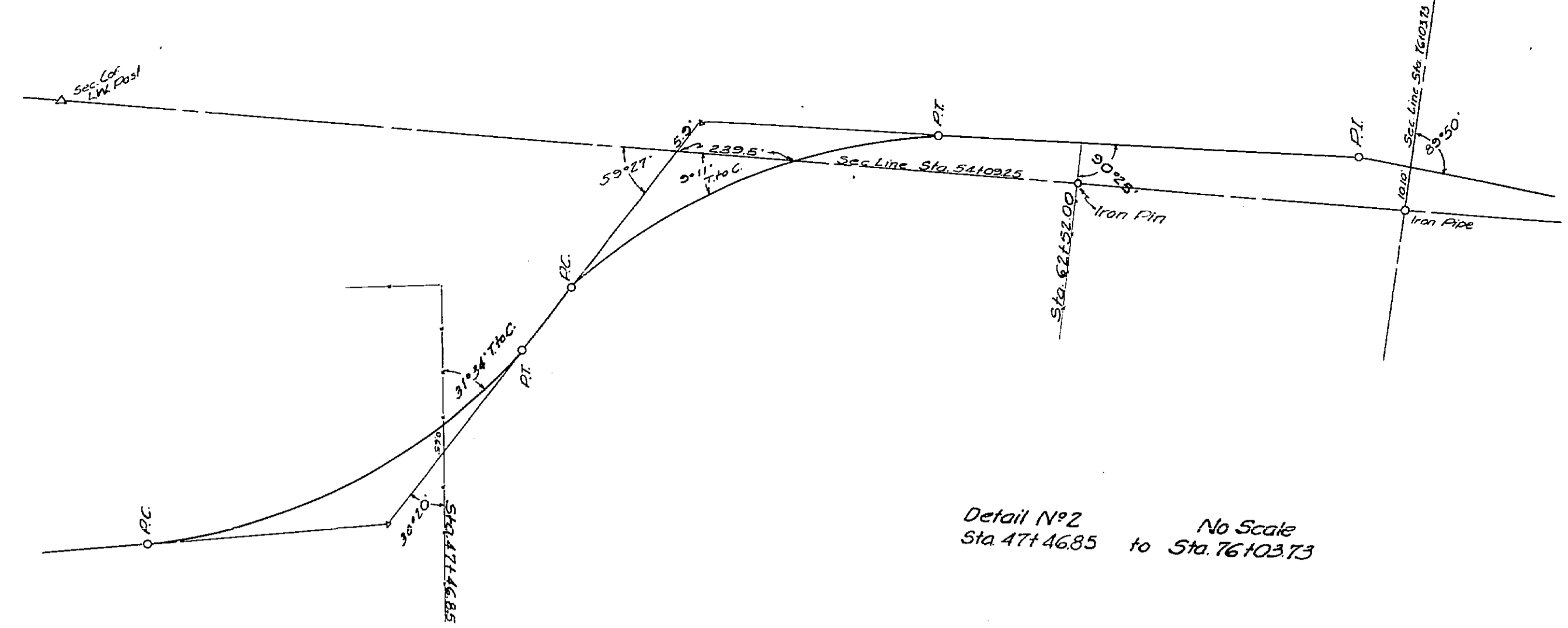
**BEGIN JOB**  
 STA. 10+00 STA.  
 1026+12.69 on S.R. No. 20

Sta. 10+56 35' Rt.  
 Fr. Res. 30' X 37'

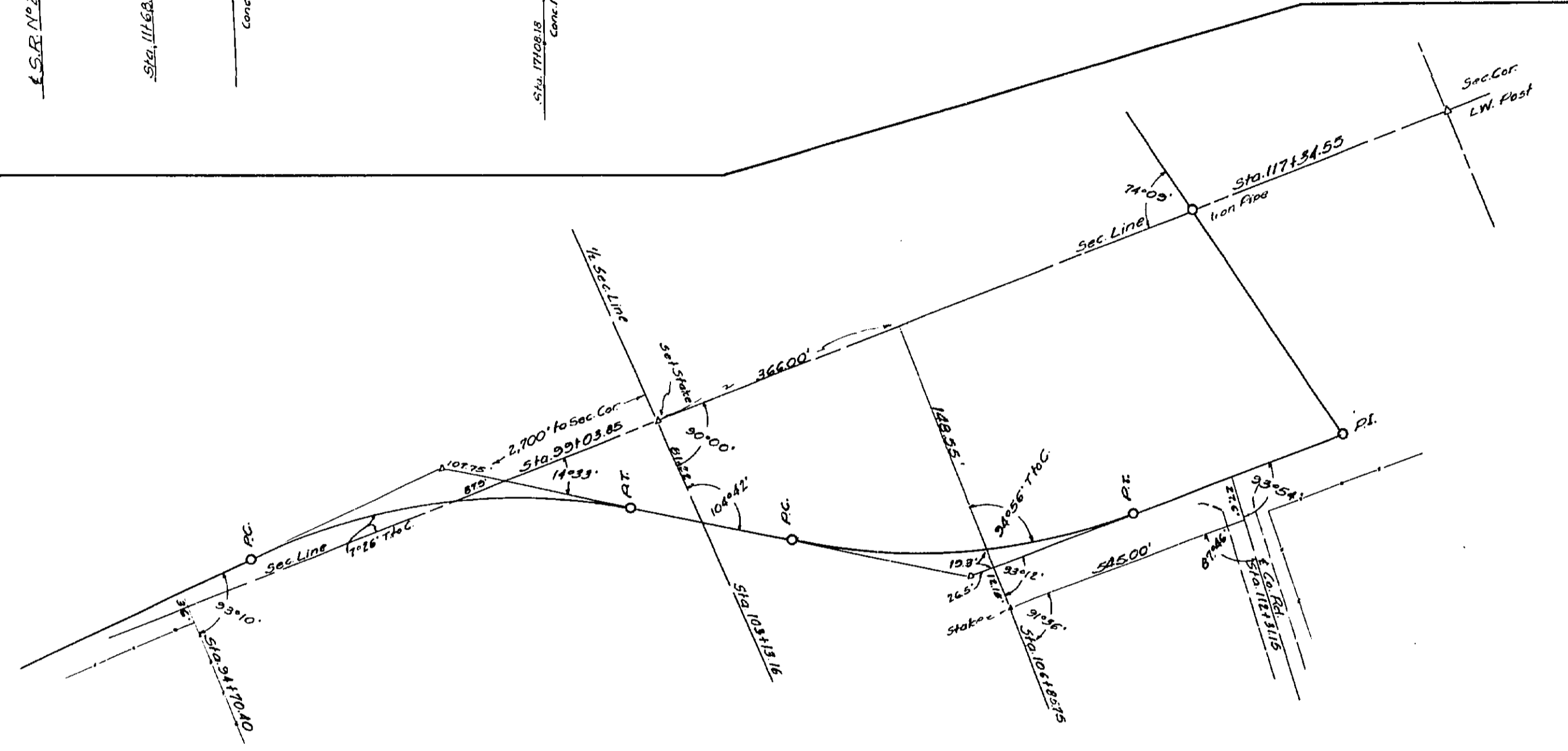
Sta. 11+58 31' Rt.  
 Pump House 5' X 4'



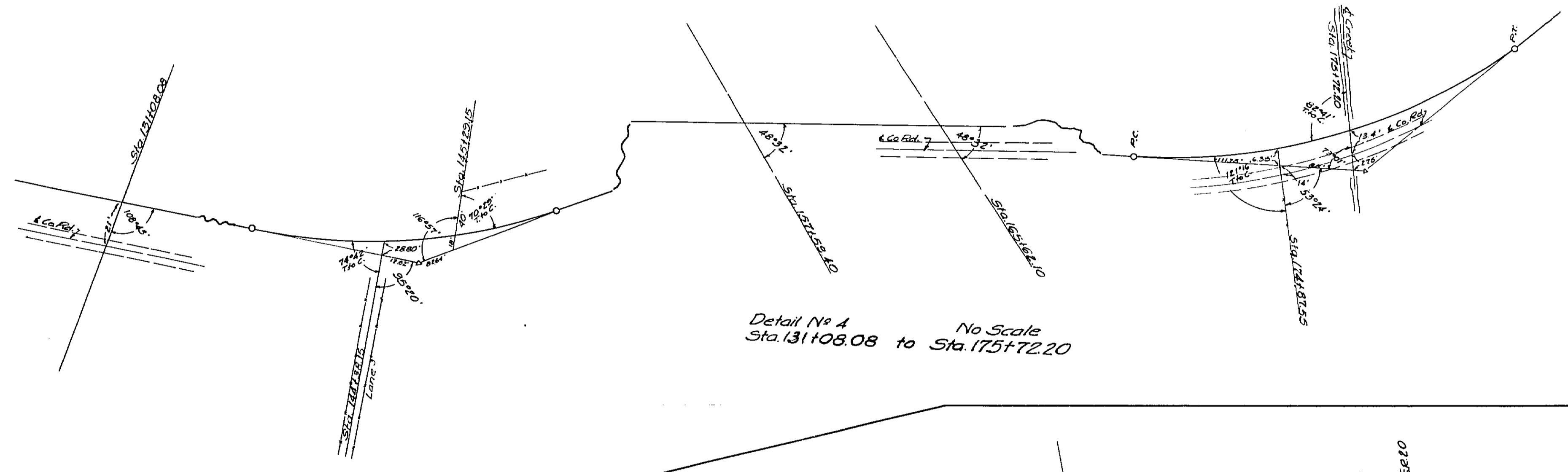
Detail No 1  
No Scale  
Sta 10100 to Sta. 41107.20



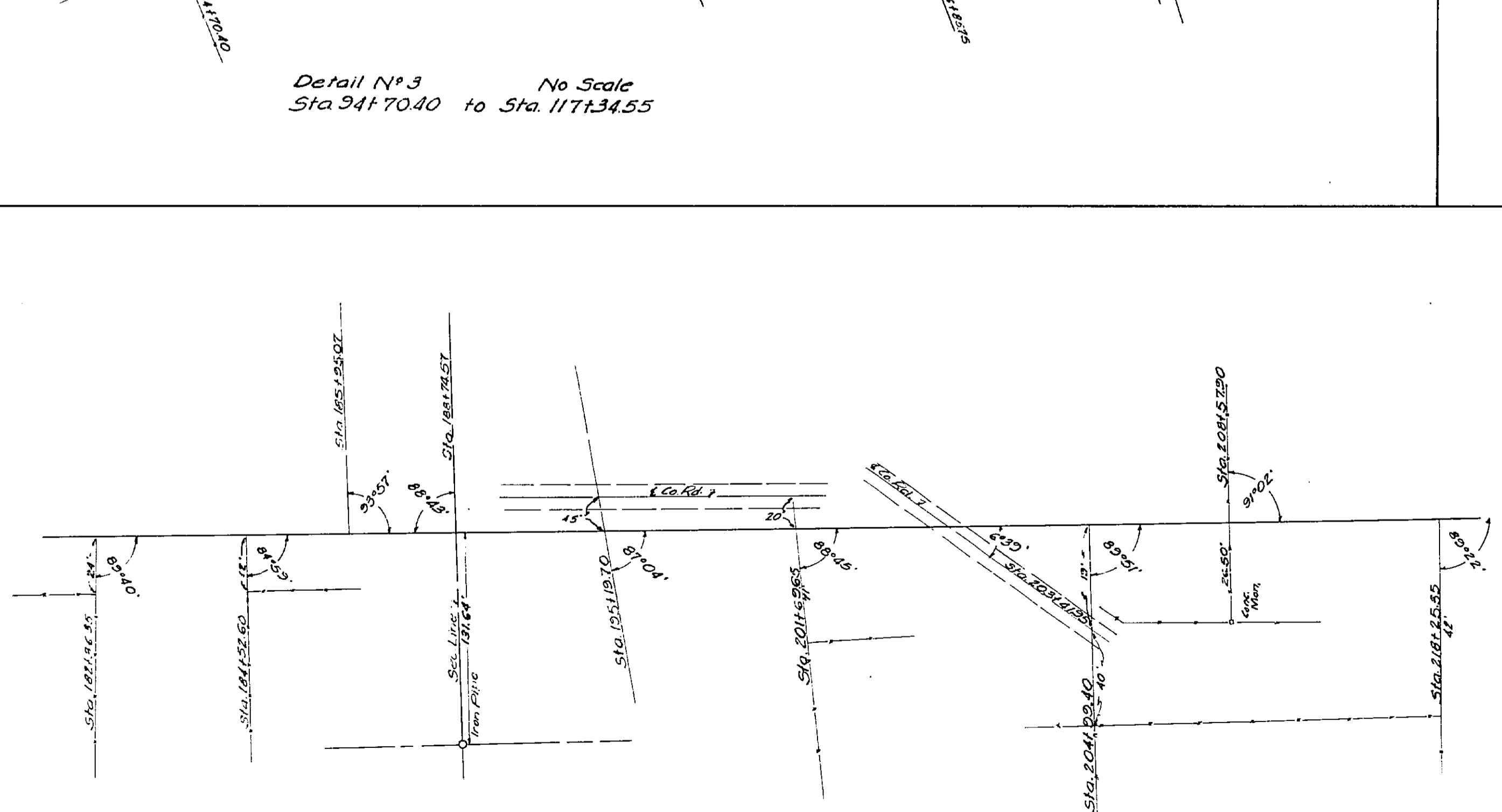
Detail No 2  
No Scale  
Sta 47146.85 to Sta. 76103.73



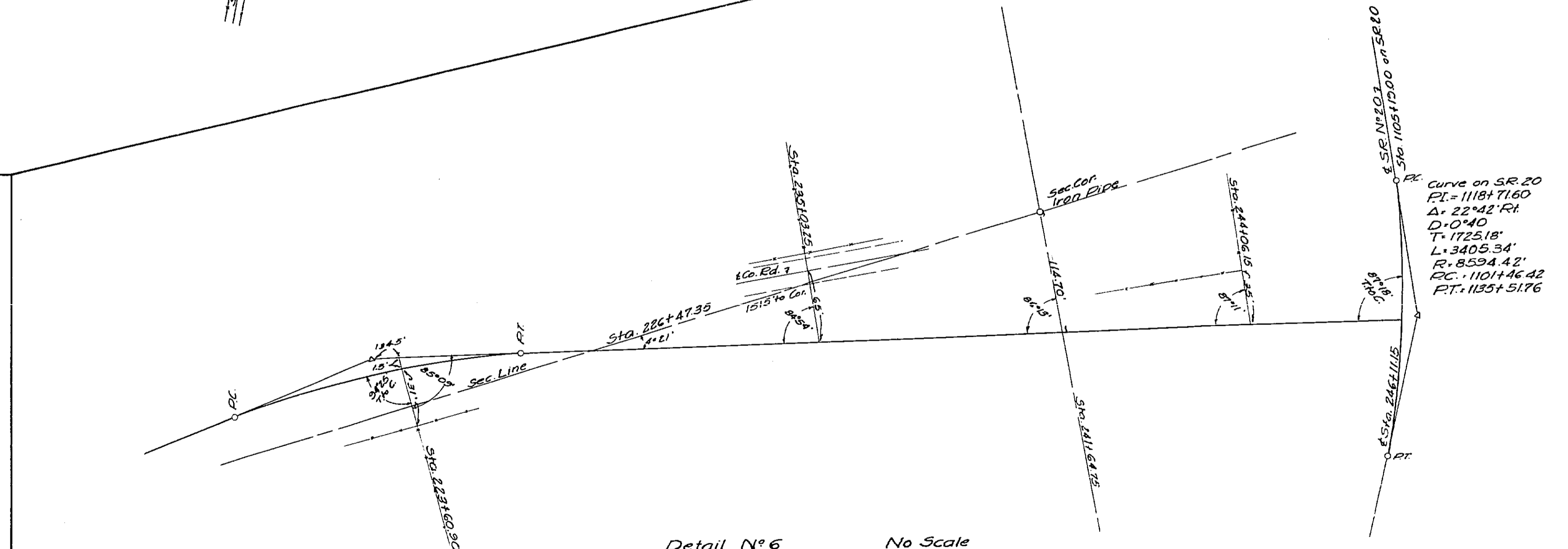
Detail No 3  
No Scale  
Sta 94170.40 to Sta. 117134.55



Detail No 4  
No Scale  
Sta. 131108.08 to Sta. 175172.20



Detail No 5  
No Scale  
Sta 182136.35 to Sta. 218125.35



Detail No 6  
No Scale  
Sta. 223160.90 to Sta. 246111.15

Curve on SR 20  
 P.C. = 11181.7160  
 A = 22°42'RH  
 D = 1040  
 T = 1725.18'  
 L = 3405.34'  
 R = 8594.42'  
 P.T. = 110146.42  
 P.T. = 113515.176

**STATE OF FLORIDA  
STATE ROAD DEPARTMENT  
RIGHT OF WAY MAP**

SECTION No. 5654-150  
 ROAD No. (S-377) S-379 LIBERTY COUNTY

SCALE 1" =	NAMES	DATES	APPROVED BY
DRAWN	JGP	3-30-53	<i>[Signature]</i> DIVISION ENGINEER
INDEXED			<i>[Signature]</i> STATE HIGHWAY ENGINEER
REVISED			