

BEGIN SURVEY
 STA. 10+00.00 =
 STA. 341+01.37 (S.R. 12)

SEE DETAIL BELOW

PI. Sta. 336+76.60 (S.R. 12)
 Δ 28°34' Lt.
 D 3'00"
 T 492.21'
 L 963.33'
 R 1910.08'
 PC. Sta. 331+84.33
 PT. Sta. 341+47.72

PI. Sta. 38+19.48
 Δ 7°31'30" Rt.
 D 0°40"
 T 568.19'
 L 1128.74'
 R 8594.42'
 PC. Sta. 321.54.30
 PT. Sta. 43+83.04

PI. Sta. 85+93.64
 Δ 6°34'30" Lt.
 D 0°30"
 T 691.67'
 L 1381.67'
 R 1445.92'
 PC. Sta. 79+01.97
 PT. Sta. 92+83.64

0+00(105+00) - 0+80.35 N. 16°19'50" W
 0+80.35 - 2+10 N. 60°46'10" E
 Reg. R/W = 50ft. Lt. of Centerline and all
 the area lying Rt. of Centerline between
 said Centerline and Roadway R/W

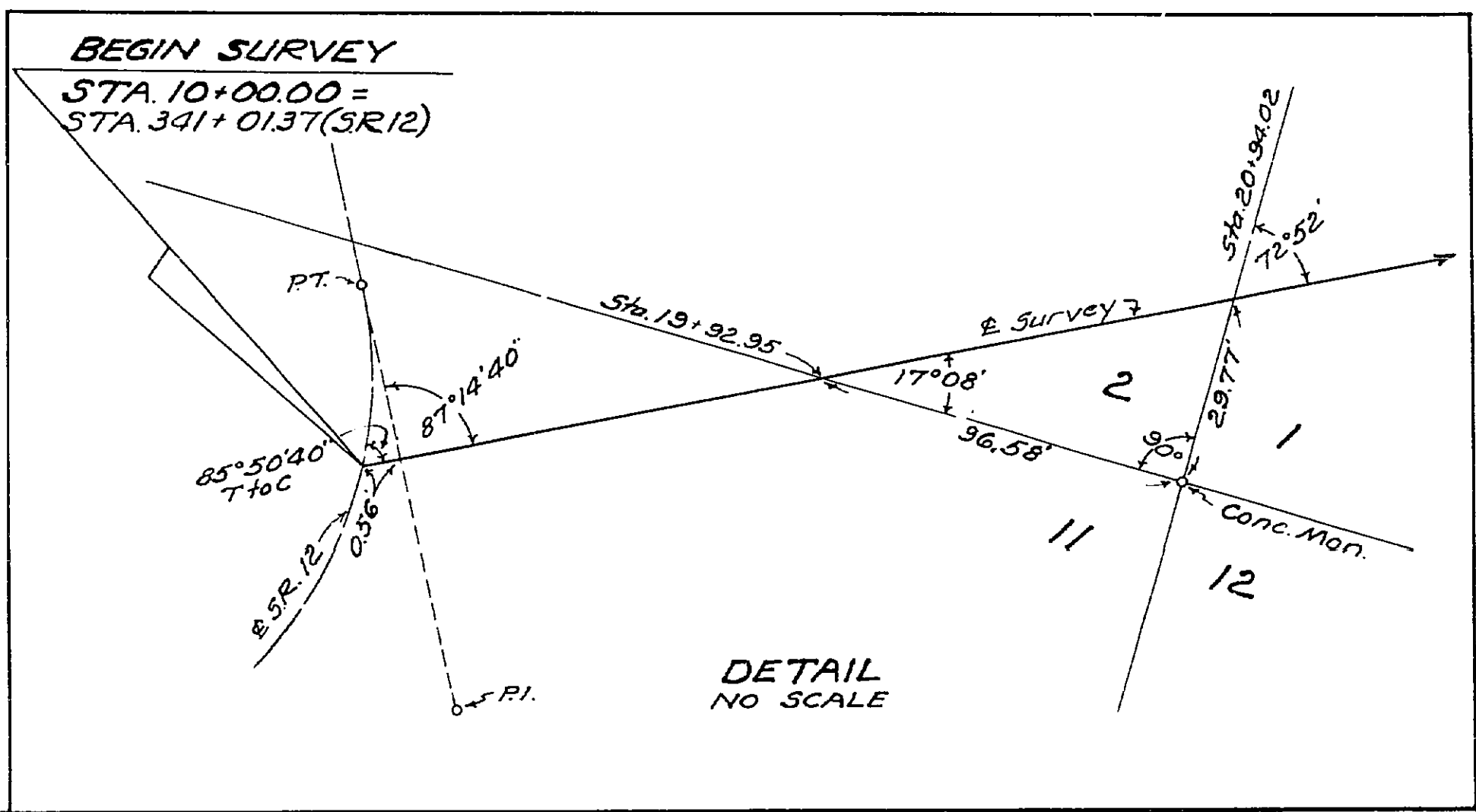
PI. Sta. 194+36.94
 Δ 55°37'40" Lt.
 D 4°00"
 T 753.82'
 L 1390.7'
 R 1432.69'
 PC. Sta. 186+81.12
 PT. Sta. 200+71.82

0+00(224+45) - 0+50 N. 71°57'30" W
 0+50 - 2+05 S. 82°02'30" W
 Reg. R/W = 30ft. Lt. of Centerline

PI. Sta. 245+69.67
 Δ 75°39'10" Rt.
 D 5°00"
 T 889.72'
 L 1512.72'
 R 146.28'
 PC. Sta. 236+78.95
 PT. Sta. 251+92.67

PI. Sta. 278+62.10
 Δ 21°34'30" Lt.
 D 2°00"
 T 554.65'
 L 1095.69'
 R 2867.93'
 PC. Sta. 273+07.45
 PT. Sta. 284+03.14

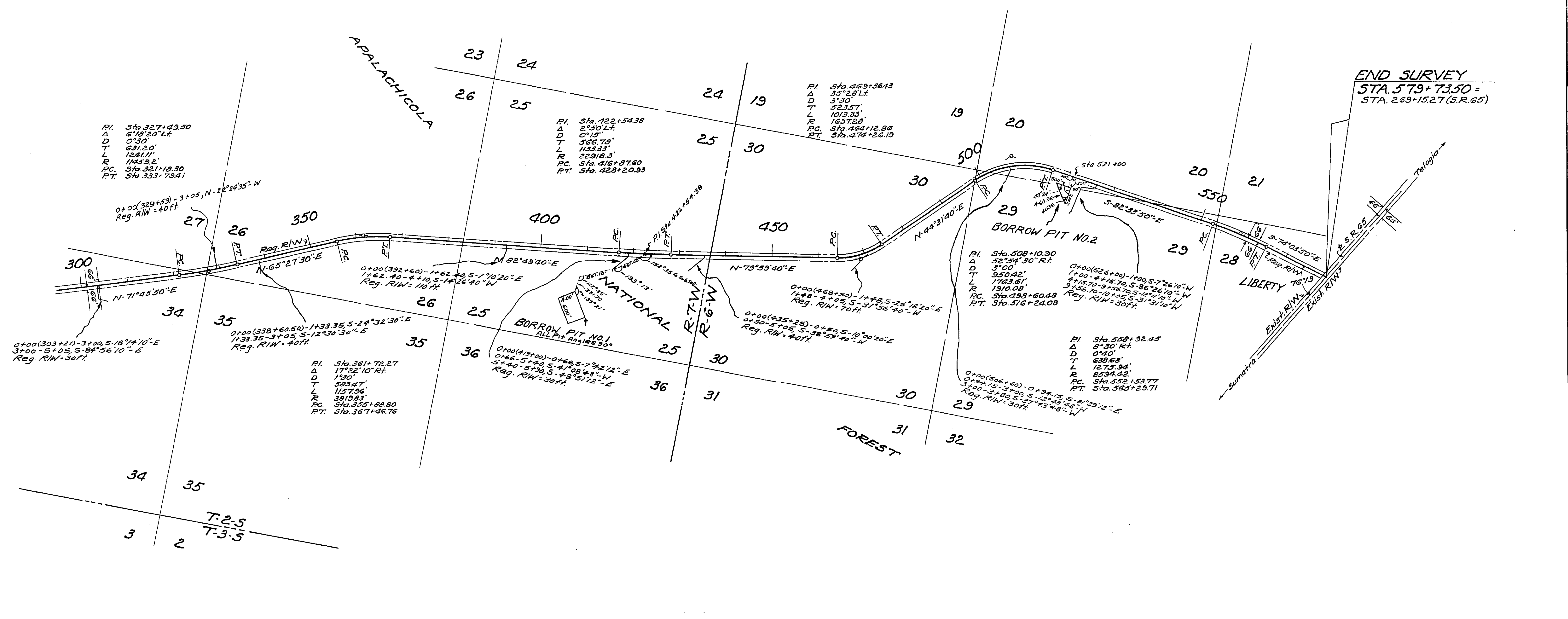
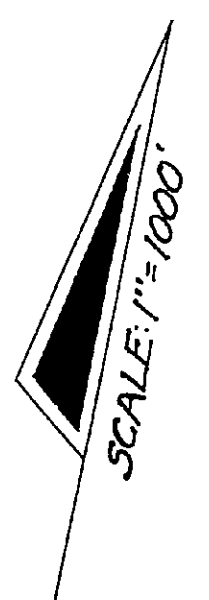
0+00(285+00) - 3+05 N. 18°4'10" W
 Reg. R/W = 30ft.



BEGIN SURVEY
 STA. 10+00.00 =
 STA. 341+01.37 (S.R. 12)

DETAIL
 NO SCALE

STATE OF FLORIDA STATE ROAD DEPARTMENT			
RIGHT OF WAY MAP			
STATE ROAD NO. 378 LIBERTY COUNTY			
BY	DATE	APPROVED BY	DATE
DRAWN		<i>J. P. Diehl</i>	
TRACED	D.F.E.	12-7-62	DISTRICT ENGINEER
CHECKED			ENGINEER OF RIGHTS OF WAY
COMPARED			
INDEXED			
DITCHES	S.C. TOWN	1-22-63	STATE HIGHWAY ENGINEER
REVISION	BY	DATE	



END SURVEY
 STA. 579+73.50 =
 STA. 269+15.27 (S.R. 65)

UTILITY POLES		
POWER		
STA.	RT.	LT.
579+02		20'

Owner: Talquin Elec. Coop.

STATE OF FLORIDA
 STATE ROAD DEPARTMENT

RIGHT OF WAY MAP

STATE ROAD NO. 378 LIBERTY COUNTY

DRAWN	BY	DATE	APPROVED BY	DATE
TRACED	D.F.E.	12-7-62	<i>[Signature]</i>	
CHECKED			<i>[Signature]</i>	
COMPARED				
INDEXED				

SECTION. 56002-2501 SHEET 2 OF 2

REVISION	BY	DATE
Pits and details S.C.-T.O.W. 1-22-63		