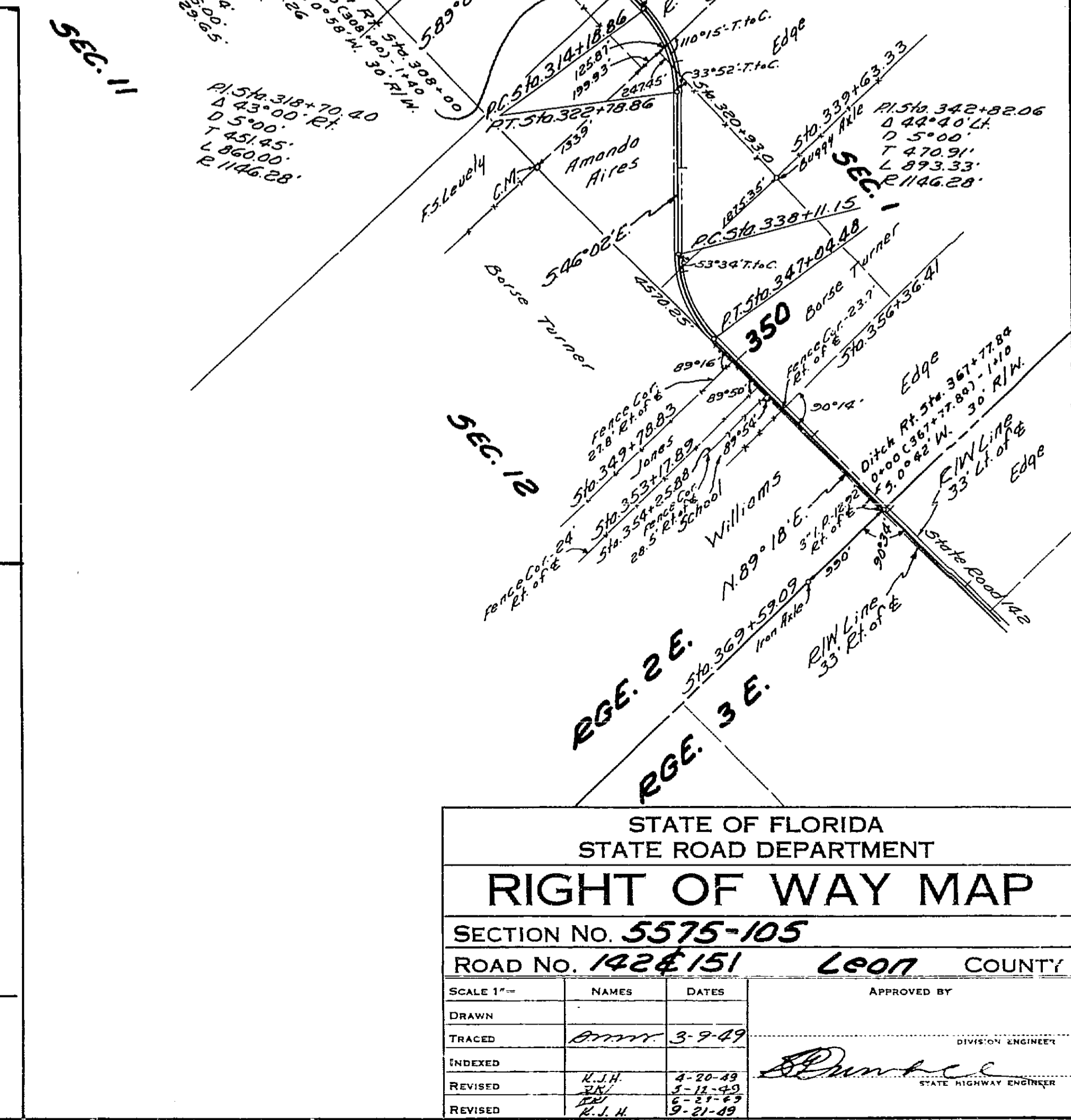
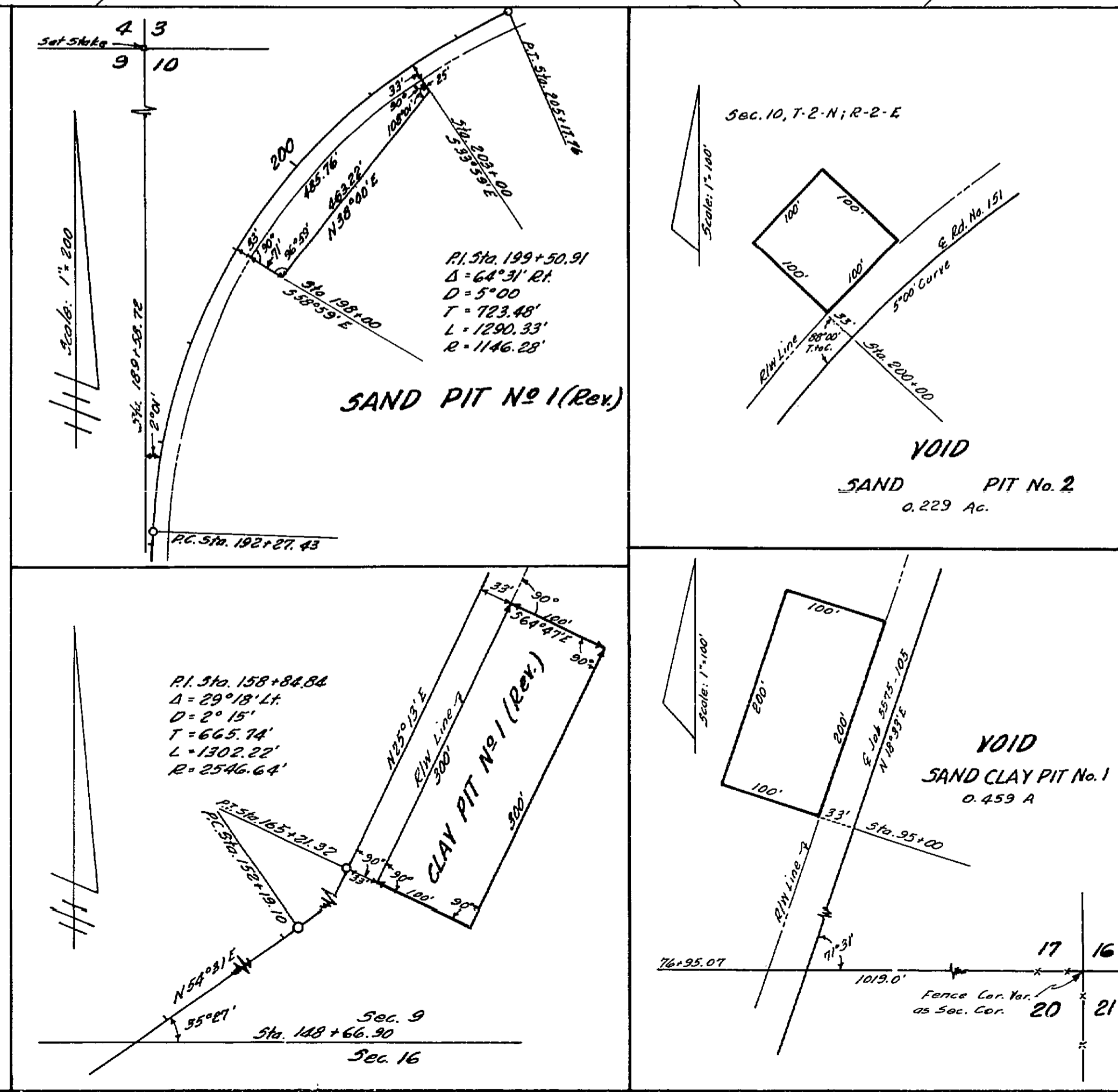
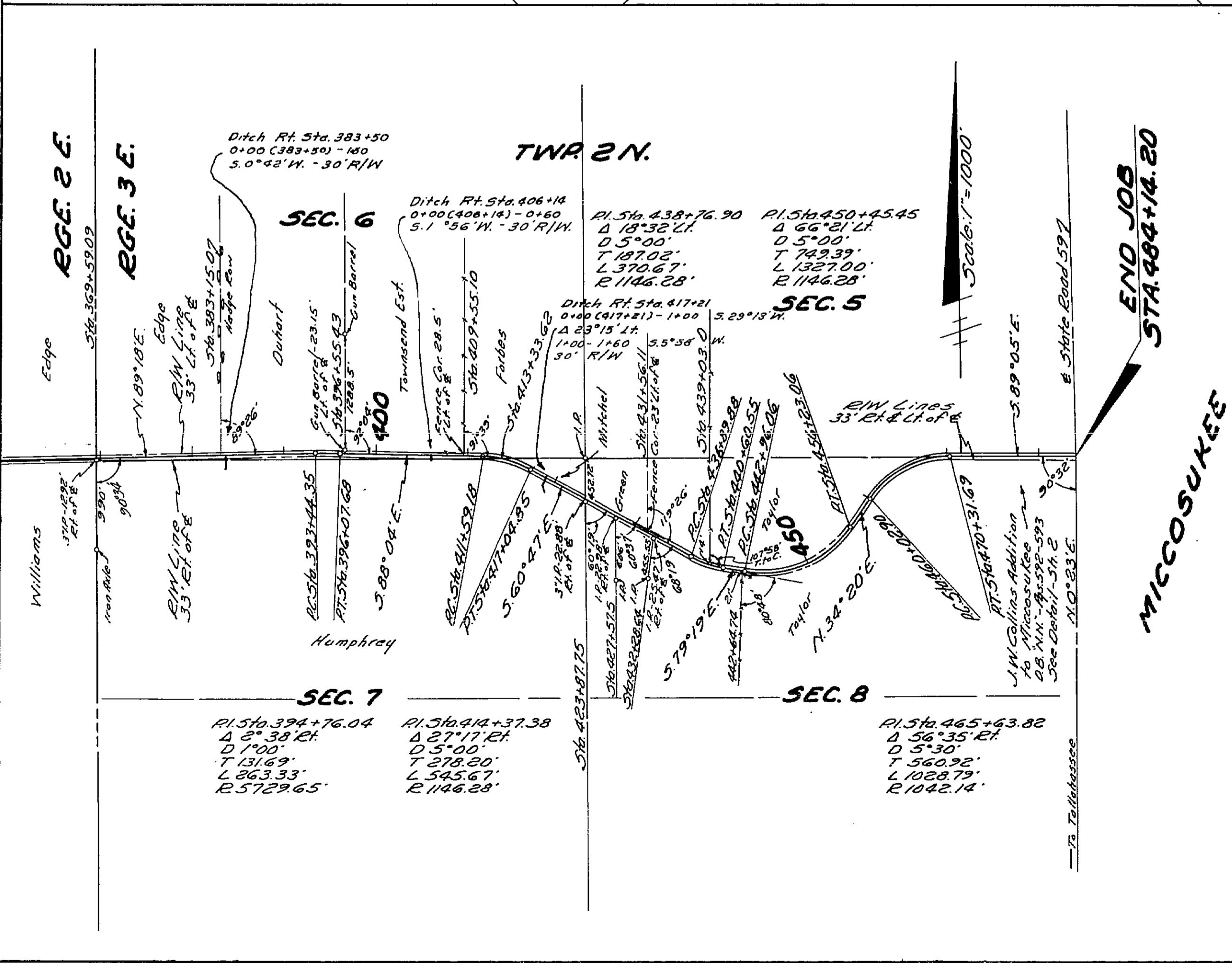
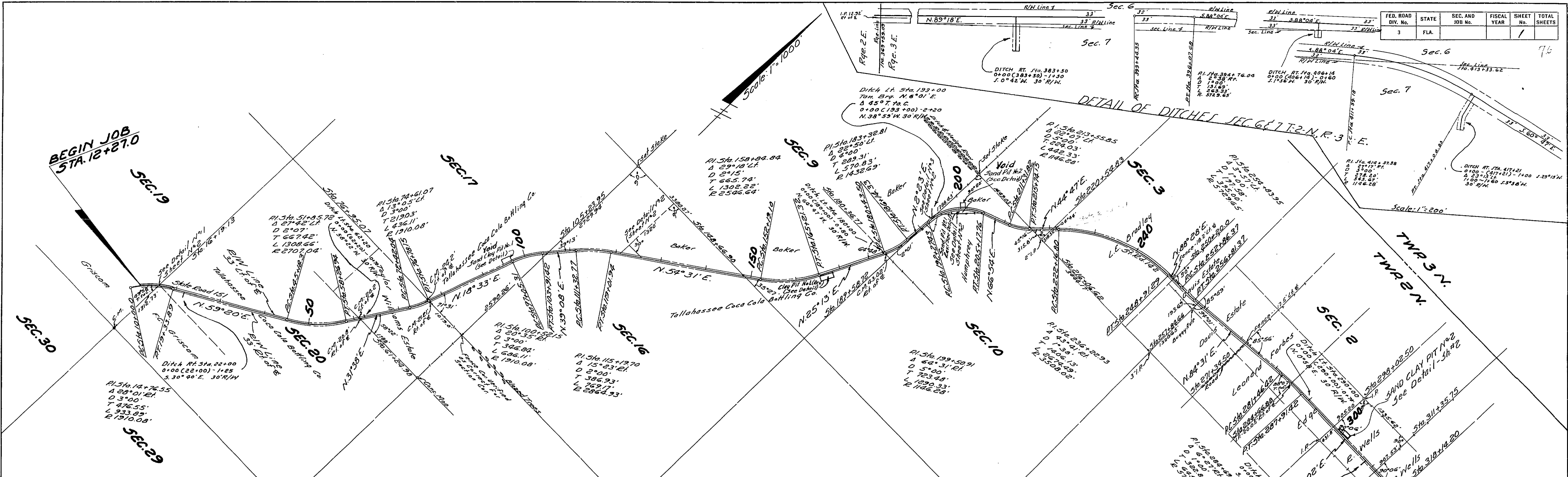
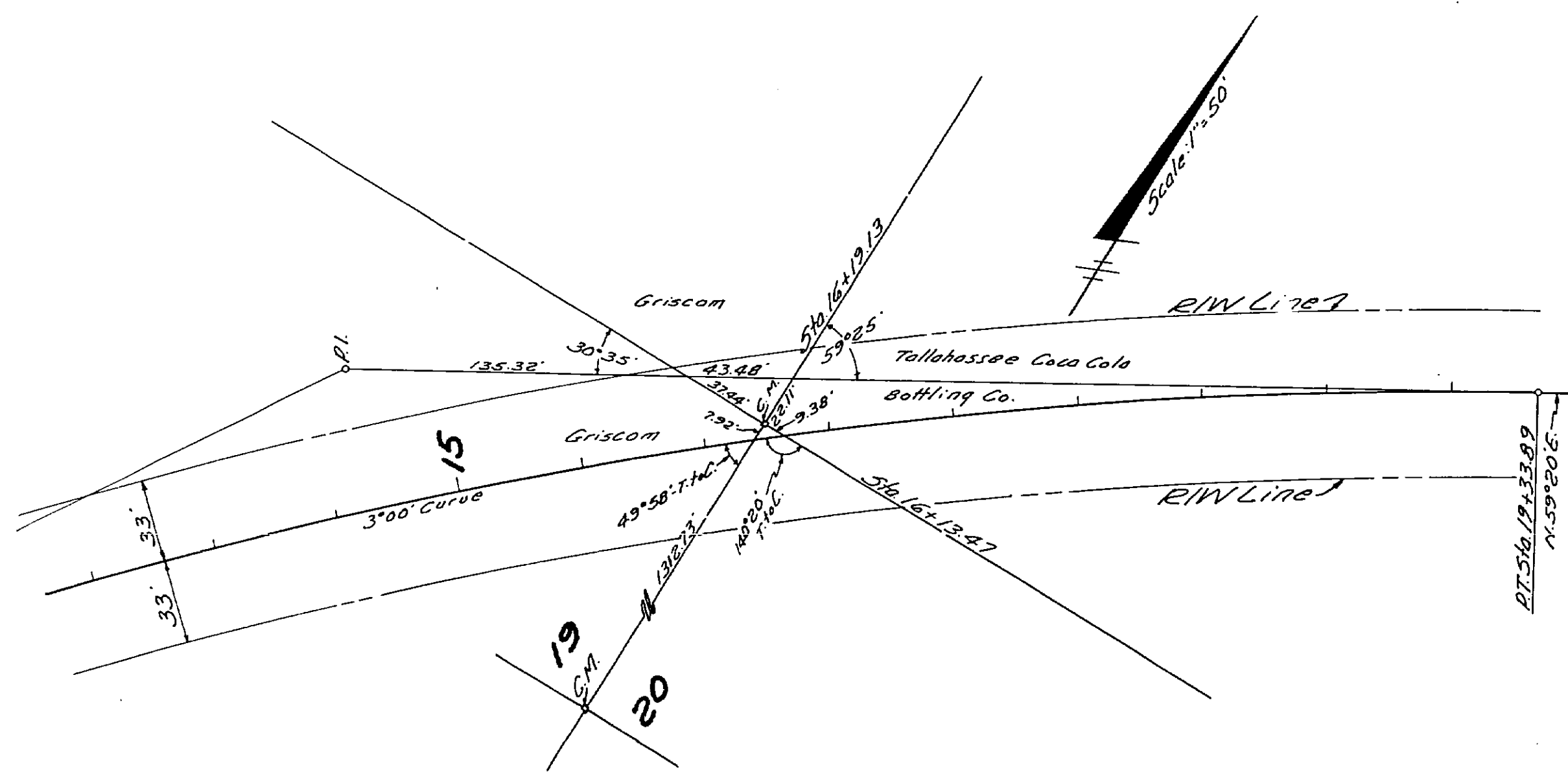


FED. ROAD DIV. No.	STATE	SEC. AND JOB No.	FISCAL YEAR	SHEET No.	TOTAL SHEETS
3	FLA.			1	76

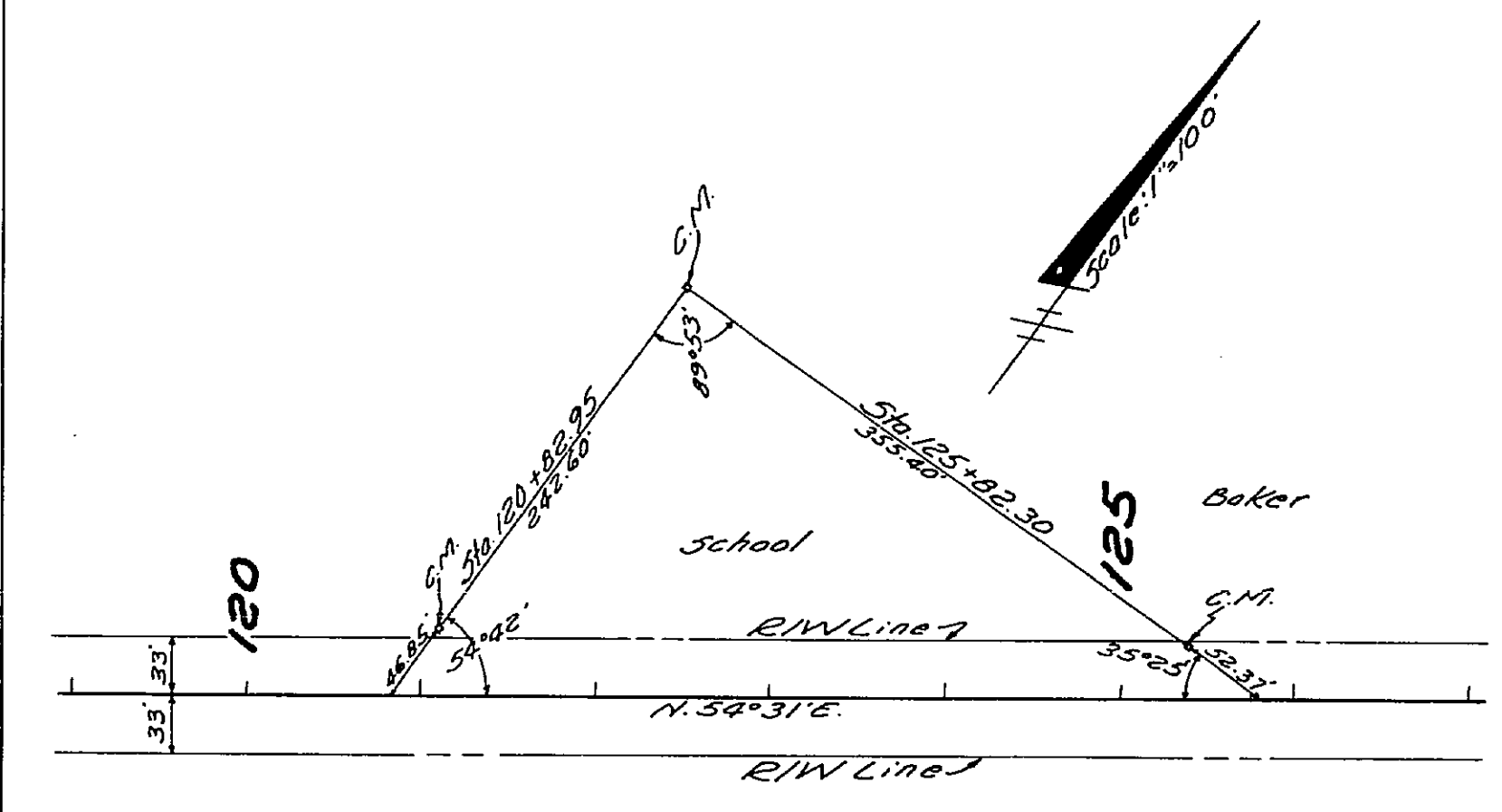


STATE OF FLORIDA STATE ROAD DEPARTMENT				
RIGHT OF WAY MAP				
SECTION No. 5575-105				
ROAD No. 142 & 151 Leon COUNTY				
SCALE 1" =	NAMES	DATES	APPROVED BY	
DRAWN			DIVISION ENGINEER	
TRACED	B.M.M.	3-9-49	STATE HIGHWAY ENGINEER	
INDEXED				
REVISED	H.H.	4-20-49		
REVISED	H.H.	4-11-49		
REVISED	H.H.	6-21-49		
REVISED	B.M.M.	10-6-49		

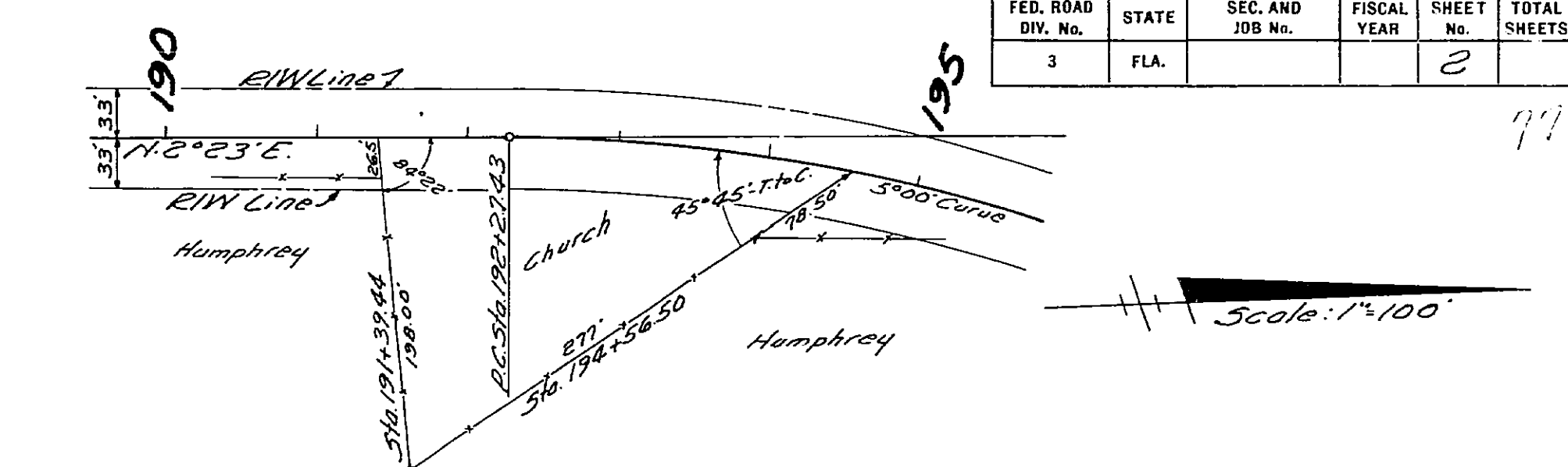
FED. ROAD DIV. No.	STATE	SEC. AND JOB No.	FISCAL YEAR	SHEET No.	TOTAL SHEETS
3	FLA.			2	



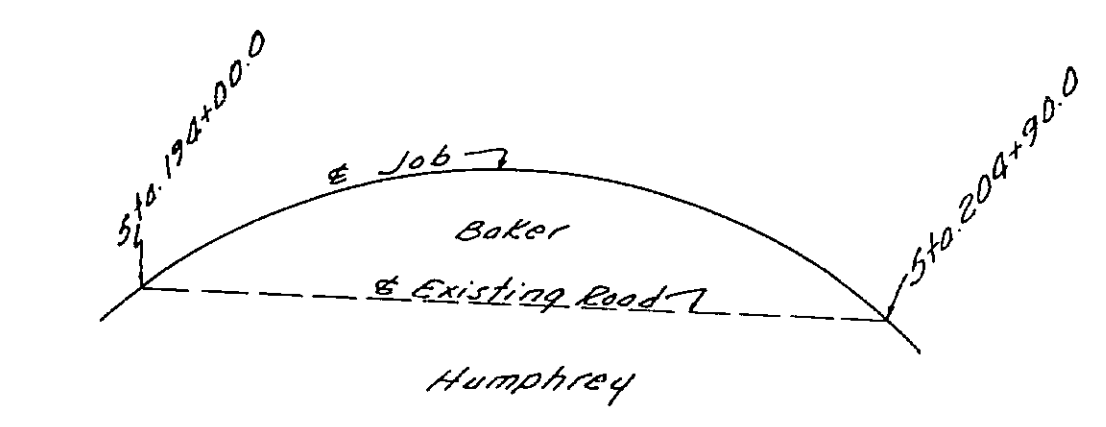
DETAIL N#1



DETAIL N#2

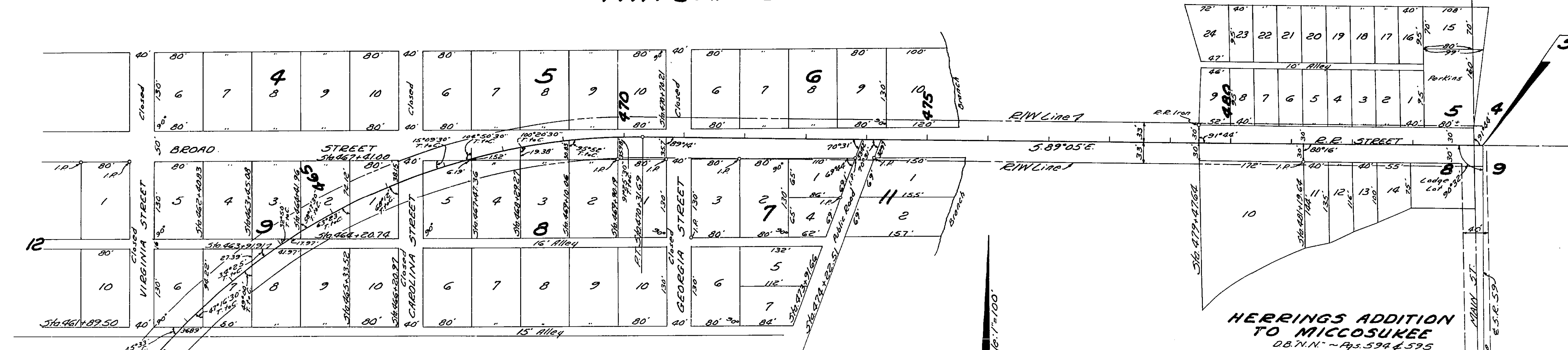


DETAIL N#3



DETAIL N#4
NO SCALE.

TWP 2 N. ~ RGE. 3 E.

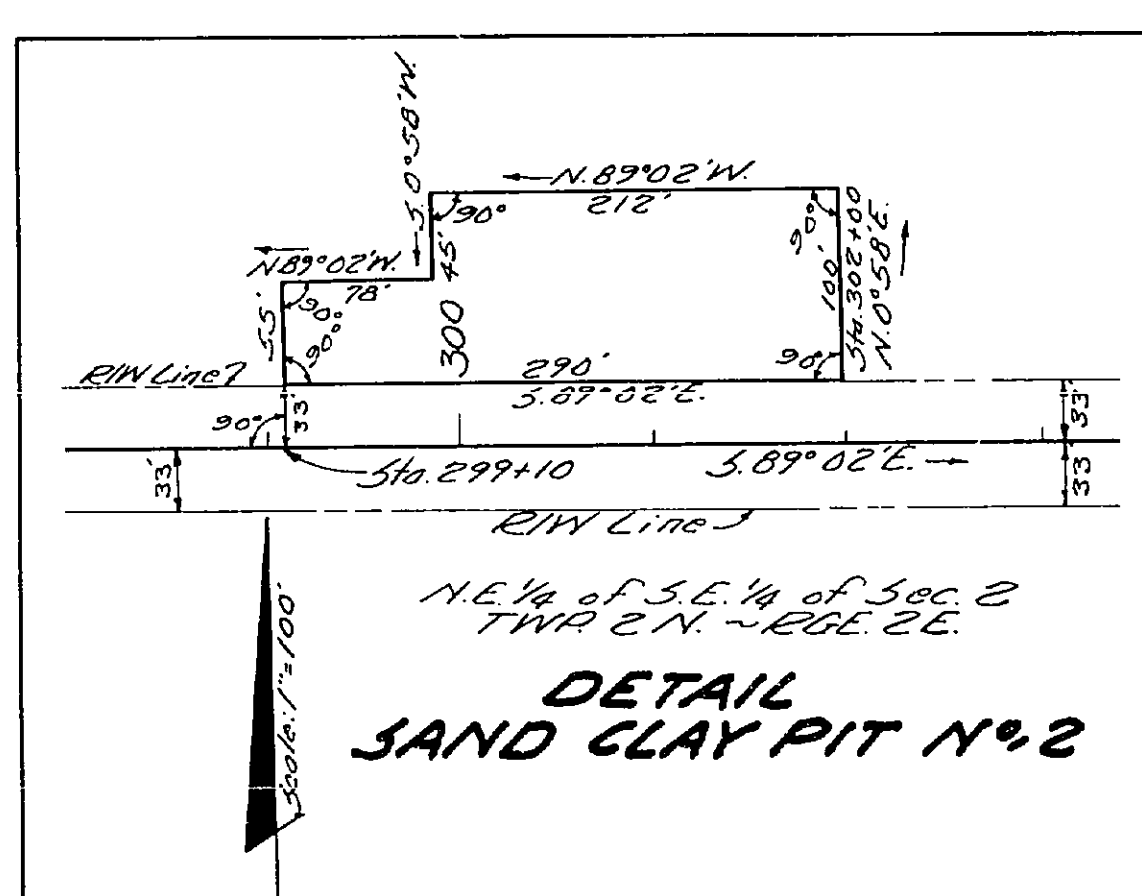


END JOB
STA. 484+14.20

HERRINGS ADDITION
TO MICCOSUKEE
D.B. N.N. ~ Pgs. 594 & 595

J.W. COLLINS ADDITION TO MICCOSUKEE
D.B. N.N. ~ Pgs. 592 & 593

P.I. Sta. 465+63.82
Δ 56° 35' 21"
D 5+30'
T 560.92'
L 1028.79'
R 1042.14'



DETAIL
SAND CLAY PIT N#2

DETAIL N#5

STATE OF FLORIDA STATE ROAD DEPARTMENT				
RIGHT OF WAY MAP				
SECTION NO. 5575-105				
ROAD NO. 142 & 151 LEON COUNTY				
SCALE 1" =	NAMES	DATES	APPROVED BY	
DRAWN				
TRACED	<i>BTM</i>	3-9-49	<i>Dunhill</i> STATE HIGHWAY ENGINEER	
INDEXED				
REVISED	<i>BTM</i>	10-2-49		
REVISED				