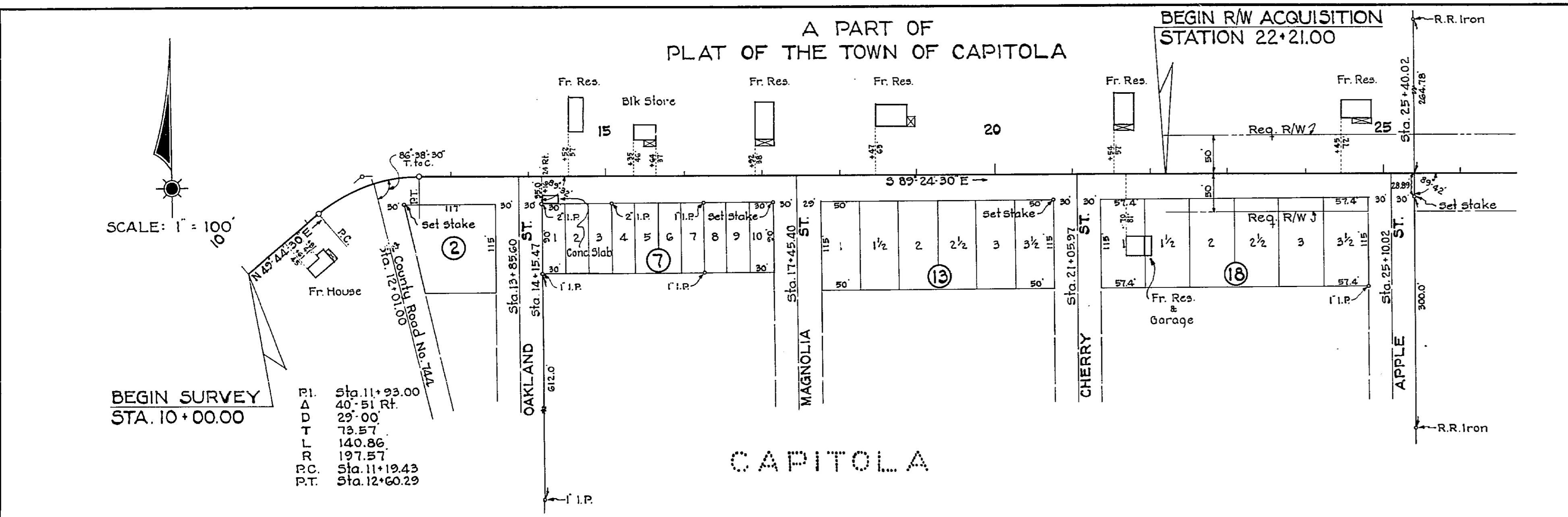
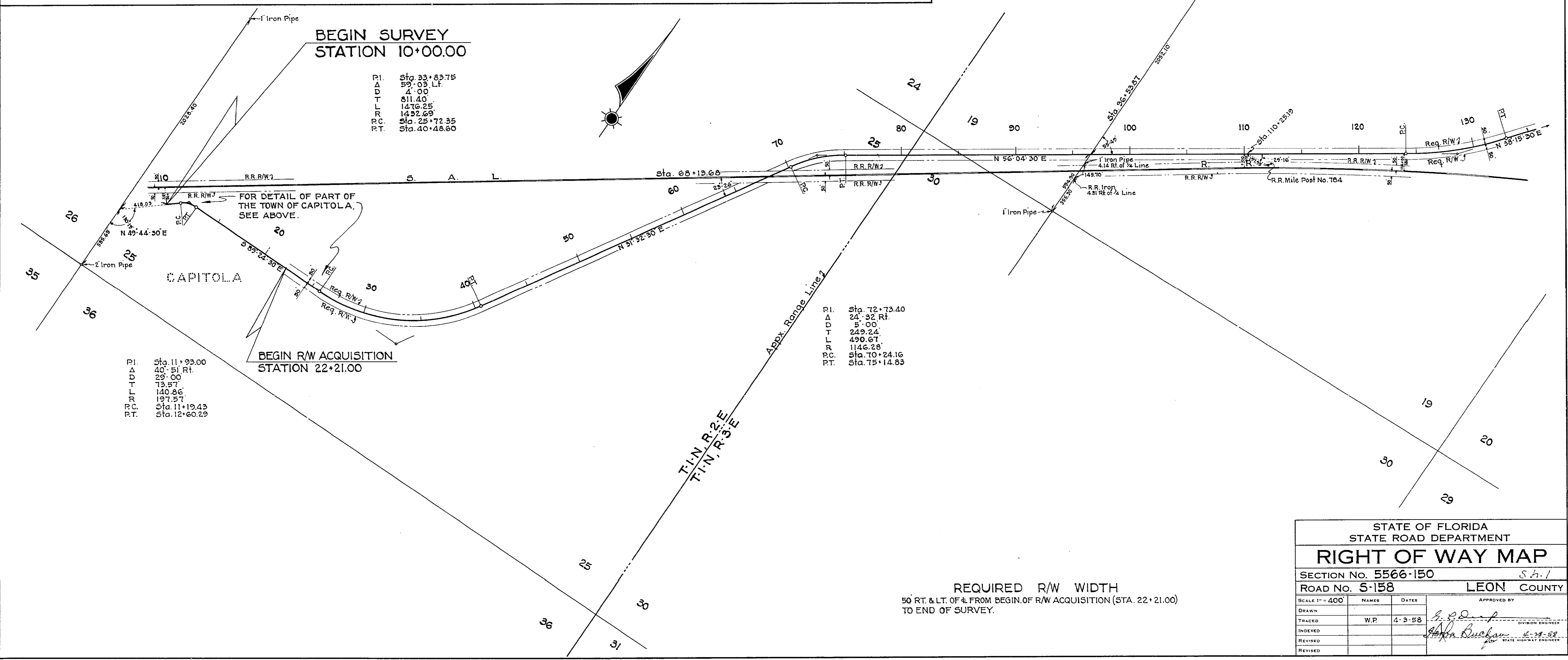


FED. ROAD DIV. NO.	STATE	SEC. AND YEAR	JOB NO.	FISCAL YEAR	SHEET NO.	TOTAL SHEETS
3	FLA.	5566-150	57	1	2	



P.I. Sta. 11+93.00
 Δ 40'-51 Rt.
 D 29'-00
 T 73.57
 L 140.86
 R 197.57
 P.C. Sta. 11+19.43
 P.T. Sta. 12+60.29

P.I. Sta. 128+64.45
 Δ 17'-49 Lt.
 D 2'-00
 T 449.06
 L 890.83
 R 2664.93
 P.C. Sta. 124+15.39
 P.T. Sta. 133+06.22



P.I. Sta. 33+83.75
 Δ 59'-03 Lt.
 D 4'-00
 T 811.40
 L 1476.25
 R 1452.69
 P.C. Sta. 25+72.35
 P.T. Sta. 40+48.60

P.I. Sta. 72+73.40
 Δ 24'-32 Rt.
 D 5'-00
 T 249.24
 L 490.67
 R 1146.28
 P.C. Sta. 70+24.16
 P.T. Sta. 75+14.83

P.I. Sta. 11+93.00
 Δ 40'-51 Rt.
 D 29'-00
 T 73.57
 L 140.86
 R 197.57
 P.C. Sta. 11+19.43
 P.T. Sta. 12+60.29

STATE OF FLORIDA
STATE ROAD DEPARTMENT

RIGHT OF WAY MAP

SECTION No. 5566-150 S.H. 1
ROAD No. 5-158 LEON COUNTY

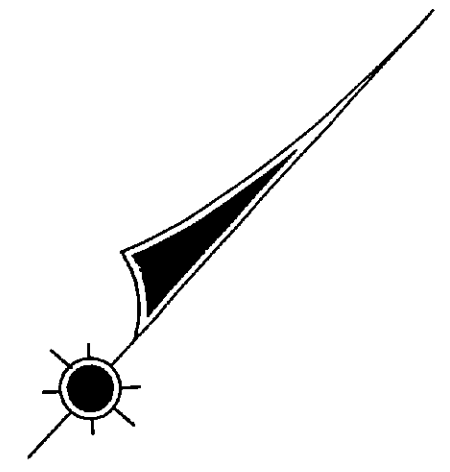
SCALE 1" = 400'

DATE	NAMES	DRAWN	INDEXED	REVISIED
4-3-58	W.P.			

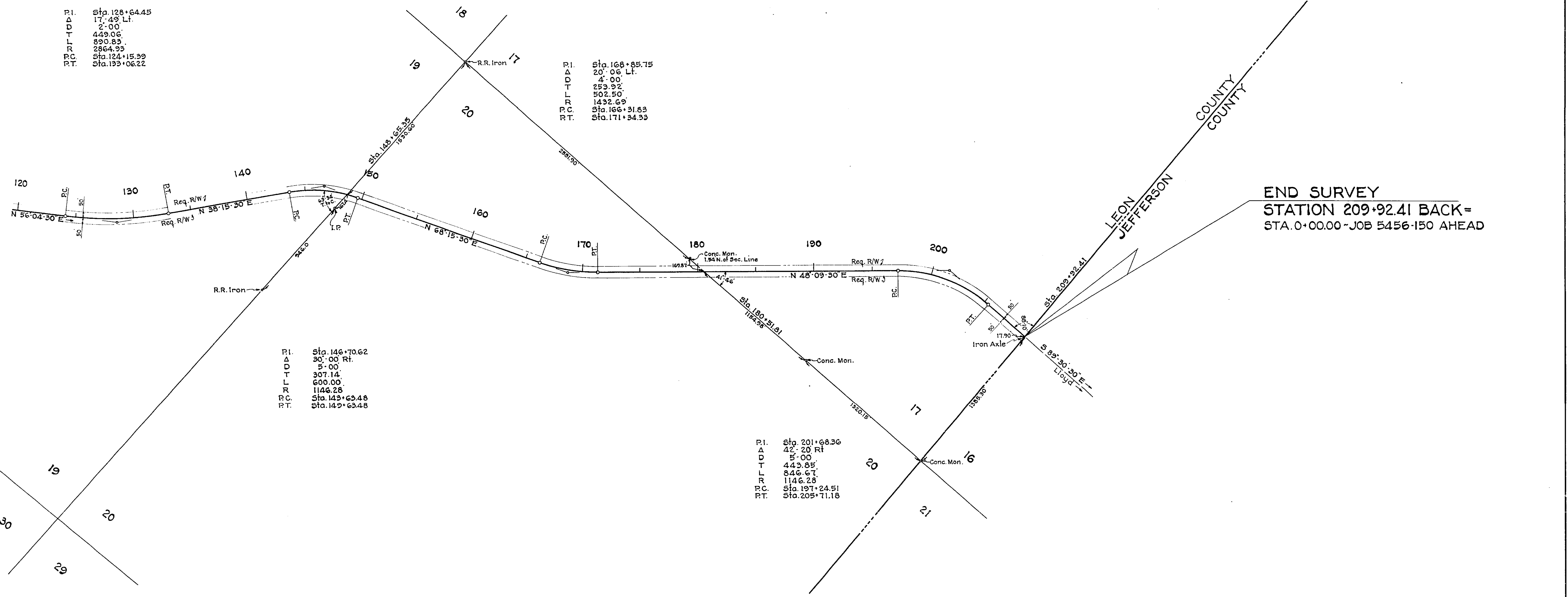
APPROVED BY
[Signature]
 DIVISION ENGINEER
[Signature]
 STATE HIGHWAY ENGINEER

REQUIRED R/W WIDTH
 50 RT. & LT. OF $\frac{1}{2}$ FROM BEGIN. OF R/W ACQUISITION (STA. 22+21.00)
 TO END OF SURVEY.

FED. ROAD DIV. NO.	STATE	SEC. AND JOB NO.	FISCAL YEAR	SHEET NO.	TOTAL SHEETS
3	FLA.	5566-150	57	2	2



T-1-N, R-3-E



END SURVEY
STATION 209+92.41 BACK=
STA. 0+00.00 - JOB 5456-150 AHEAD

P.I. Sta. 128+64.45
 Δ 17'-49" Lt.
 D 2'-00"
 T 449.06
 L 890.83
 R 2864.93
 P.C. Sta. 124+15.39
 P.T. Sta. 133+06.22

P.I. Sta. 168+85.75
 Δ 20'-06" Lt.
 D 4'-00"
 T 253.92
 L 502.50
 R 1432.69
 P.C. Sta. 166+31.83
 P.T. Sta. 171+34.33

P.I. Sta. 146+70.62
 Δ 30'-00" Rt.
 D 5'-00"
 T 307.14
 L 600.00
 R 1146.28
 P.C. Sta. 143+63.48
 P.T. Sta. 149+63.48

P.I. Sta. 201+68.36
 Δ 42'-20" Rt.
 D 5'-00"
 T 443.85
 L 846.67
 R 1146.28
 P.C. Sta. 197+24.51
 P.T. Sta. 205+71.18

STATE OF FLORIDA STATE ROAD DEPARTMENT			
RIGHT OF WAY MAP			
SECTION No. 5566-150		S-4.2	
ROAD No. S-158		LEON COUNTY	
SCALE 1" = 400'	NAMES	DATES	APPROVED BY
DRAWN			<i>S.P.P.</i>
TRACED	W.P.	4-4-58	<i>Harlan Buchanan</i> DIVISION ENGINEER
INDEXED			
REVISED			
REVISED			