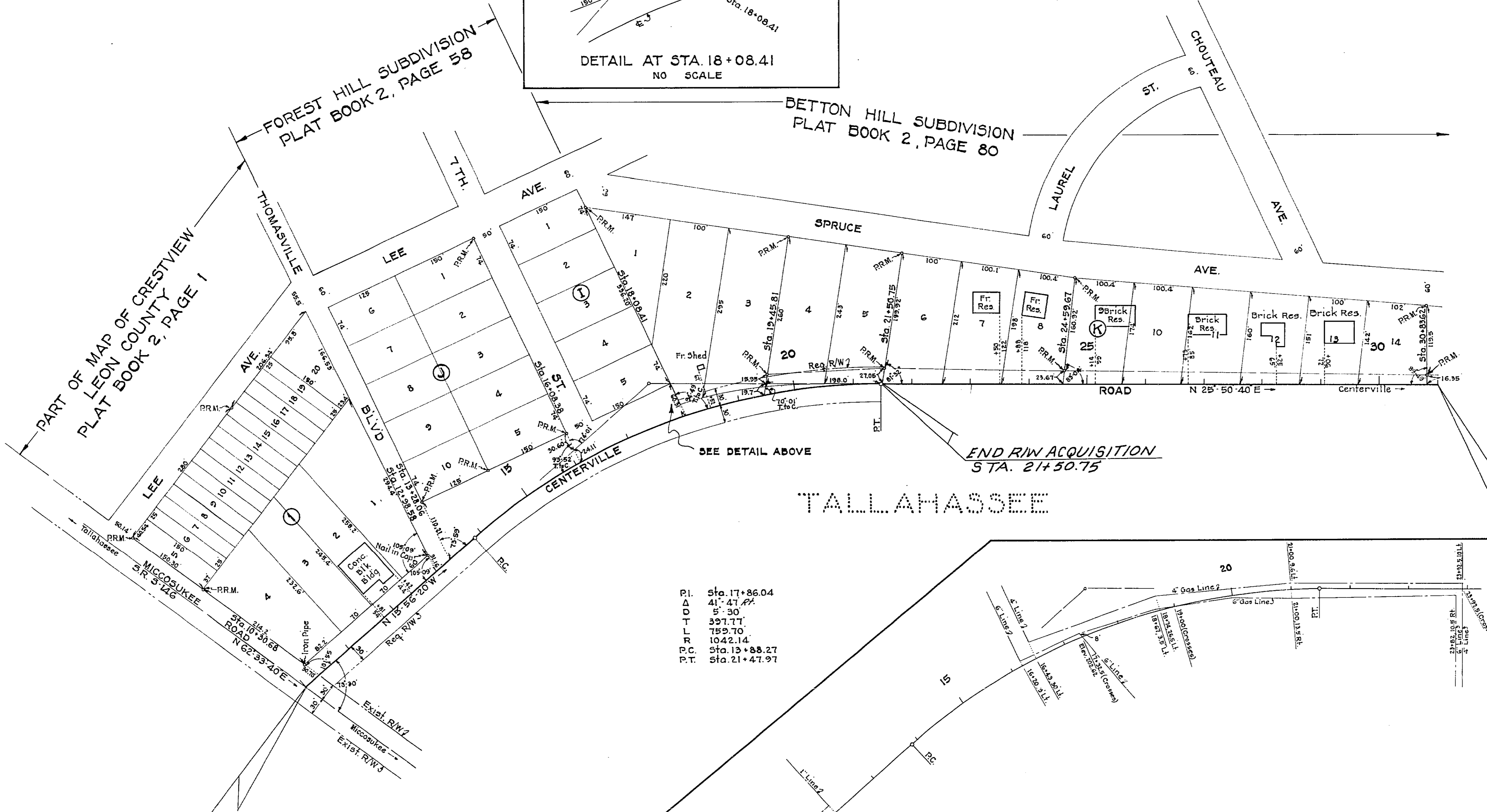
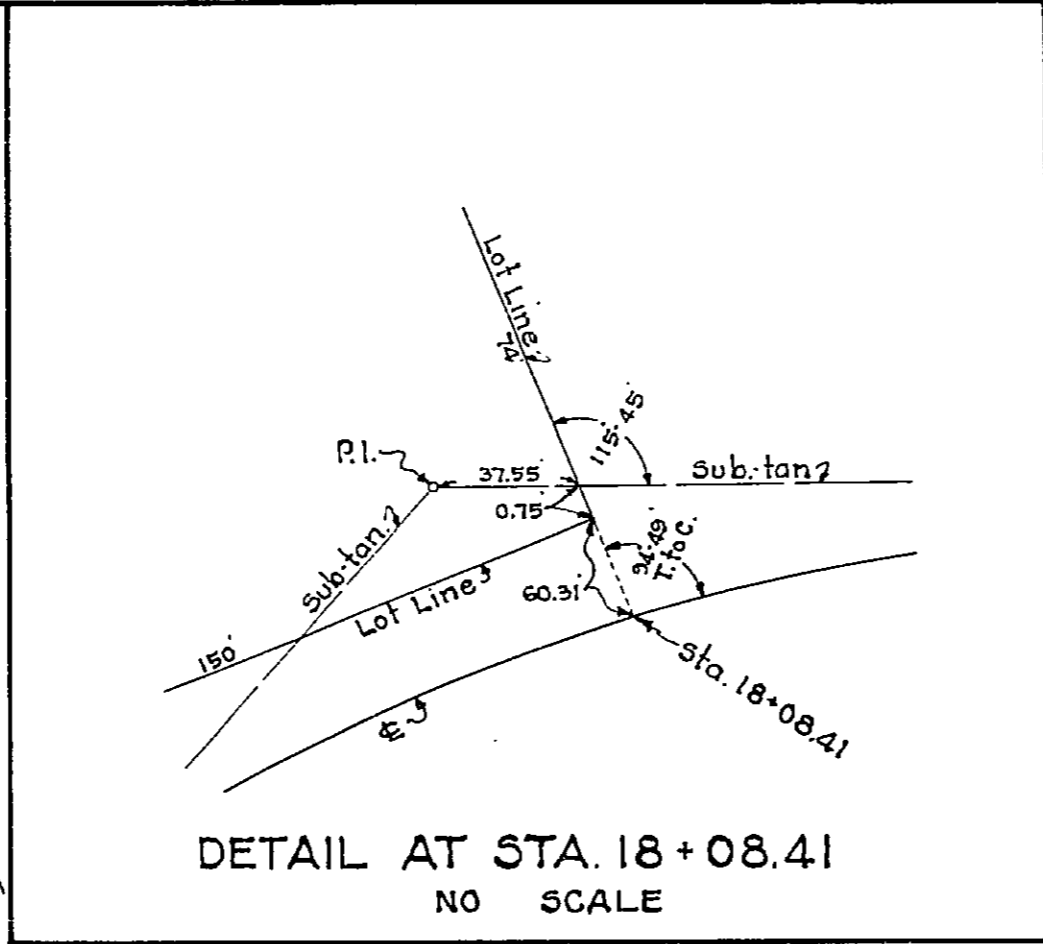
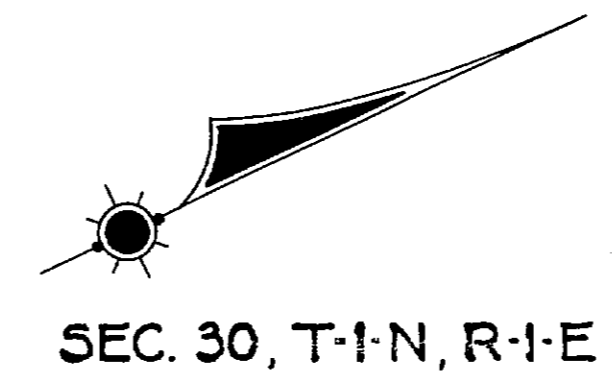


FED. ROAD DIV. No.	STATE	SEC. AND JOB No.	FISCAL YEAR	SHEET No.	TOTAL SHEETS
3	FLA.	5555-	'57	1	1



BEGIN SURVEY
STATION 10+00.00 =
STA. 10+72.94 - S.R. NO. S-146

P.I. Sta. 17+86.04
D 41'-47.77'
T 5'-30'
L 397.77'
R 759.70'
P.C. Sta. 13+88.27
P.T. Sta. 21+47.97

DETAIL SHOWING LOCATION OF GAS LINES
TALLAHASSEE GAS CO. (CITY OWNED)
SCALE: 1" = 100'

END SURVEY
STATION 31+00.00

REQUIRED R/W WIDTH
30' LT. OF E FROM STA. 18+08.41 TO END OF R/W ACQUISITION
30' RT. OF E FROM BEGINNING TO END OF R/W ACQUISITION

STATE OF FLORIDA
STATE ROAD DEPARTMENT

RIGHT OF WAY MAP

SECTION No. 5555 Sh. 1
ROAD No. S-151 LEON COUNTY

SCALE 1" = 100'	NAMES	DATE	APPROVED BY
DRAWN	W.P.	1-3-58	<i>G. L. Dimp</i> DIVISION ENGINEER
INDEXED	F.N.K.	4-18-58	<i>George R. ...</i> 1-20-58 for STATE HIGHWAY ENGINEER
REVISED			
REVISION			