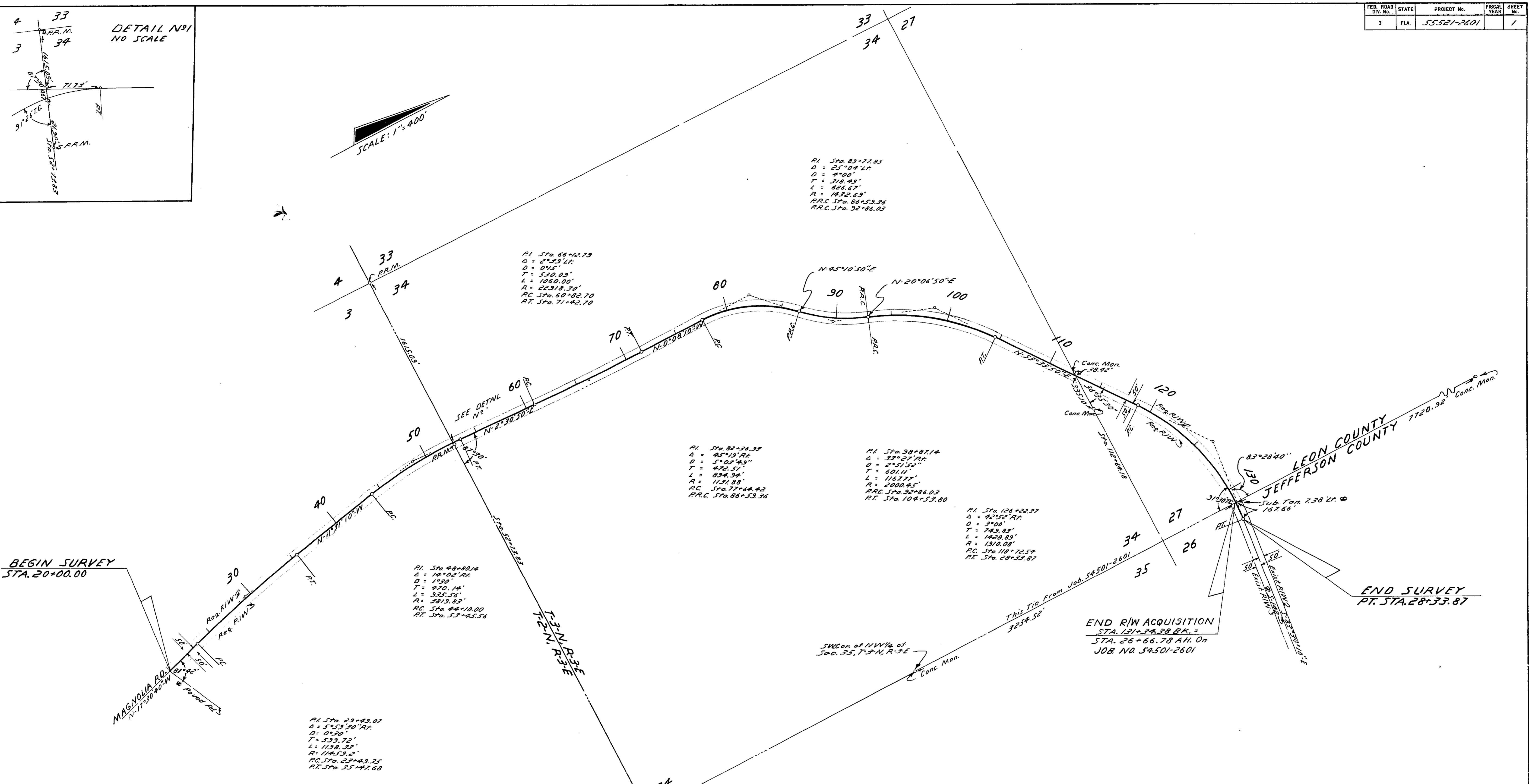


SCALE: 1" = 400'



BEGIN SURVEY STA. 20+00.00

END SURVEY PT. STA. 28+33.87

END R/W ACQUISITION STA. 121+34.38 BK. = STA. 26+66.78 A.H. On JOB. NO. 54501-2601

UTILITY		POLES	
POWER	TELEPHONE	POWER	TELEPHONE
STA.	RT. LT.	STA.	RT. LT.
20+50	21'		
85+34	4'		
83+88	46'		
34+88	27'		
99+84	7'		
104+87	27'		
110+37	10'		
115+05	20'		

STATE OF FLORIDA  
STATE ROAD DEPARTMENT

### RIGHT OF WAY MAP

STATE ROAD NO. 5142 LEON COUNTY

By: \_\_\_\_\_ DATE: \_\_\_\_\_ APPROVED BY: \_\_\_\_\_ DATE: \_\_\_\_\_

TRACED: C.D.M. 8-11-66 DISTRICT ENGINEER

CHECKED: \_\_\_\_\_ ENGINEER OF RIGHTS OF WAY

COMPARED: \_\_\_\_\_ STATE HIGHWAY ENGINEER

INDEXED: \_\_\_\_\_

SECTION 55521-2601 SHEET 1 OF 1