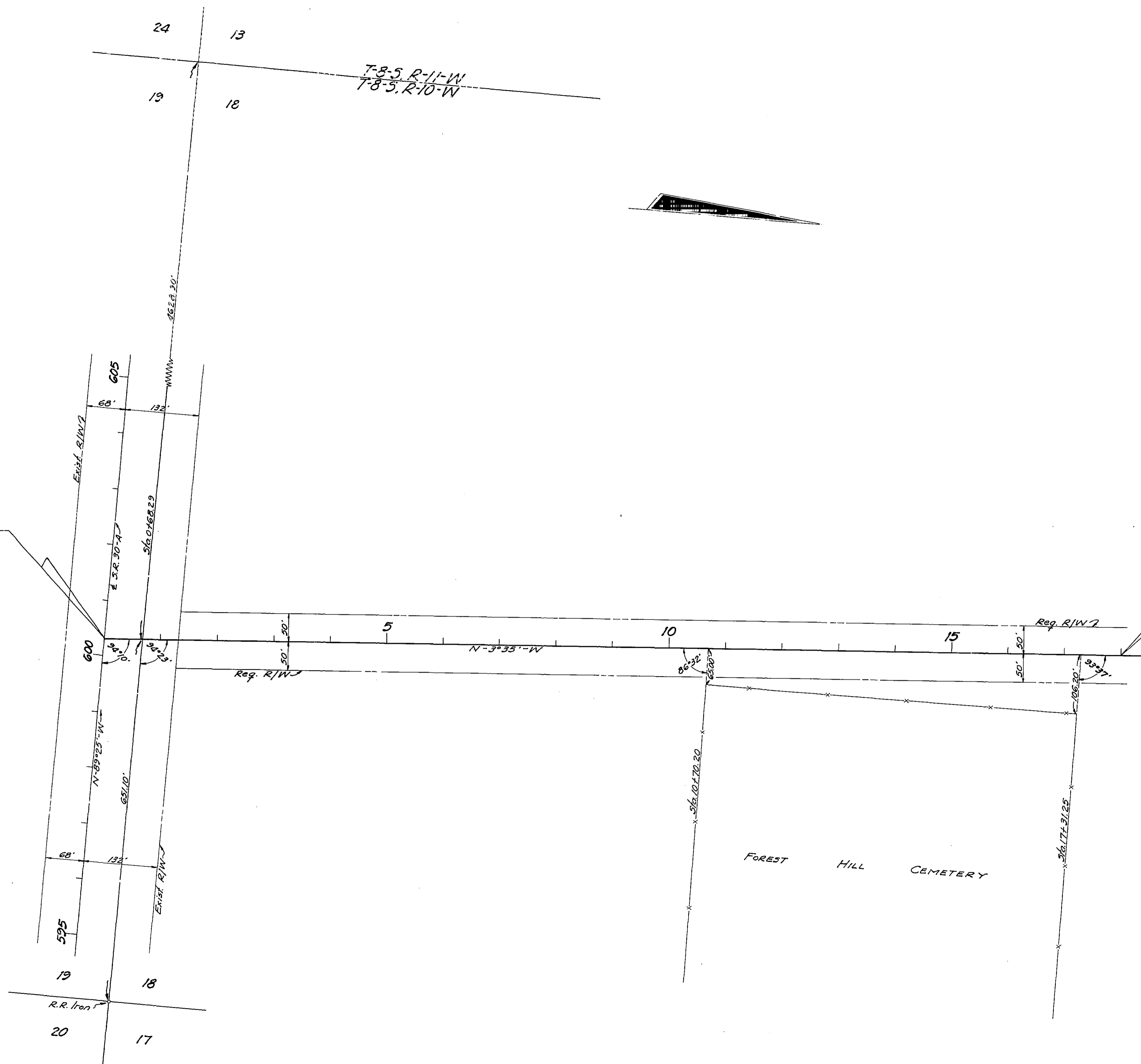


ED. ROAD DIV. No.	STATE	SECT. AND JUD. No.	FISCAL YEAR	SHEET No.	TOTAL SHEETS
3	FLA.	51530-2601	60	1	1

BEGIN SURVEY  
STA. 0+00.00 =  
STA. 600+32.25, S.R. 30-A

END SURVEY  
STA. 18+00.00

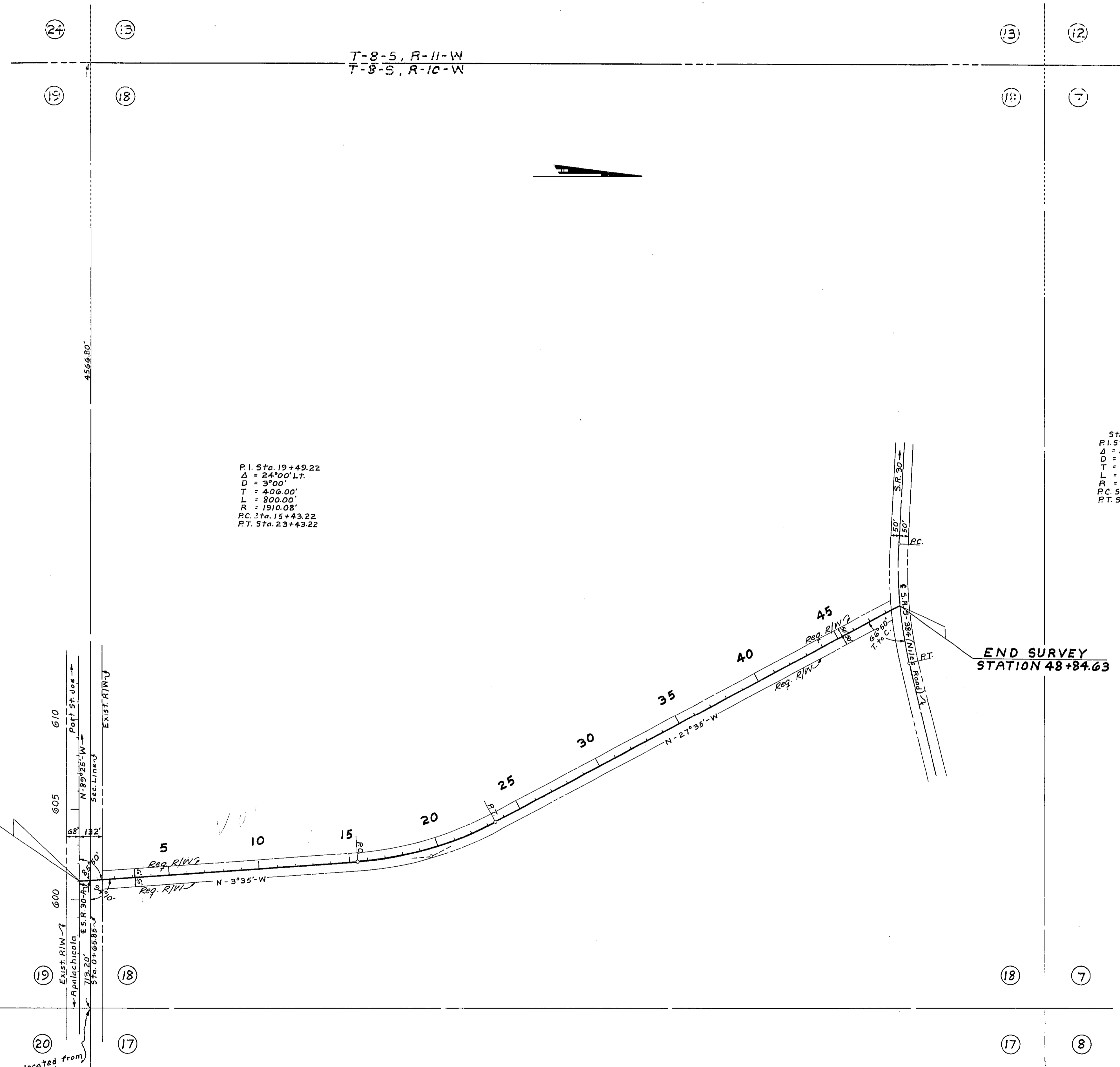


REQUIRED R/W WIDTH  
50 ft. Rt. & Lt. of  $\bar{E}$  from Beginning to End of Job

STATE OF FLORIDA STATE ROAD DEPARTMENT			
<b>RIGHT OF WAY MAP</b>			
SECTION No. 51530-2601			
ROAD No. 5-384-A		GULF COUNTY	
SCALE 1"=100'	NAMES	DATES	APPROVED BY
DRAWN			
TRACED	R.Y.B.	2-26-60	J. P. DeP...
INDEXED			DIVISION ENGINEER
REVISED			STATE HIGHWAY ENGINEER
REVISED			

FOREST HILL CEMETERY ROAD

FED. ROAD DIV. No.	STATE	SEC. AND JOB No.	FINISH YEAR	SHEET No.	TOTAL SHEETS
3	FLA.	51530		1	1



P.I. Sta. 19+49.22  
 $\Delta = 24^{\circ}00' Lt.$   
 $D = 3^{\circ}00'$   
 $T = 406.00'$   
 $L = 800.00'$   
 $R = 1910.08'$   
 P.C. Sta. 15+43.22  
 P.T. Sta. 23+43.22

State Road 5-384  
 P.I. Sta. 23+22.18  
 $\Delta = 16^{\circ}37' Lt.$   
 $D = 2^{\circ}30'$   
 $T = 334.71'$   
 $L = 664.67'$   
 $R = 2292.01'$   
 P.C. Sta. 20+57.47  
 P.T. Sta. 27+22.14

BEGIN SURVEY  
 STATION 0+00 =  
 STATION 601+00  
 on S.R. 30-A

END SURVEY  
 STATION 48+84.63

REQUIRED R/W WIDTH  
 50' Rt. & Lt. of E. from Beginning to End of Job

STATE OF FLORIDA STATE ROAD DEPARTMENT			
<b>RIGHT OF WAY MAP</b>			
SECTION No. 51530-2601			
ROAD No. S-384A		GULF COUNTY	
SCALE 1" = 300'	NAMES	DATES	APPROVED BY
DRAWN			<i>H. Chief</i>
TRACED	S.C.	9-24-58	<i>Alexa Buelow</i> DIVISION ENGINEER
INDEXED			<i>Alexa Buelow</i> 11-21-58 STATE HIGHWAY ENGINEER
REVISED			

FORREST HILL CEMETERY ROAD

Corner located from  
 Map 5107-101