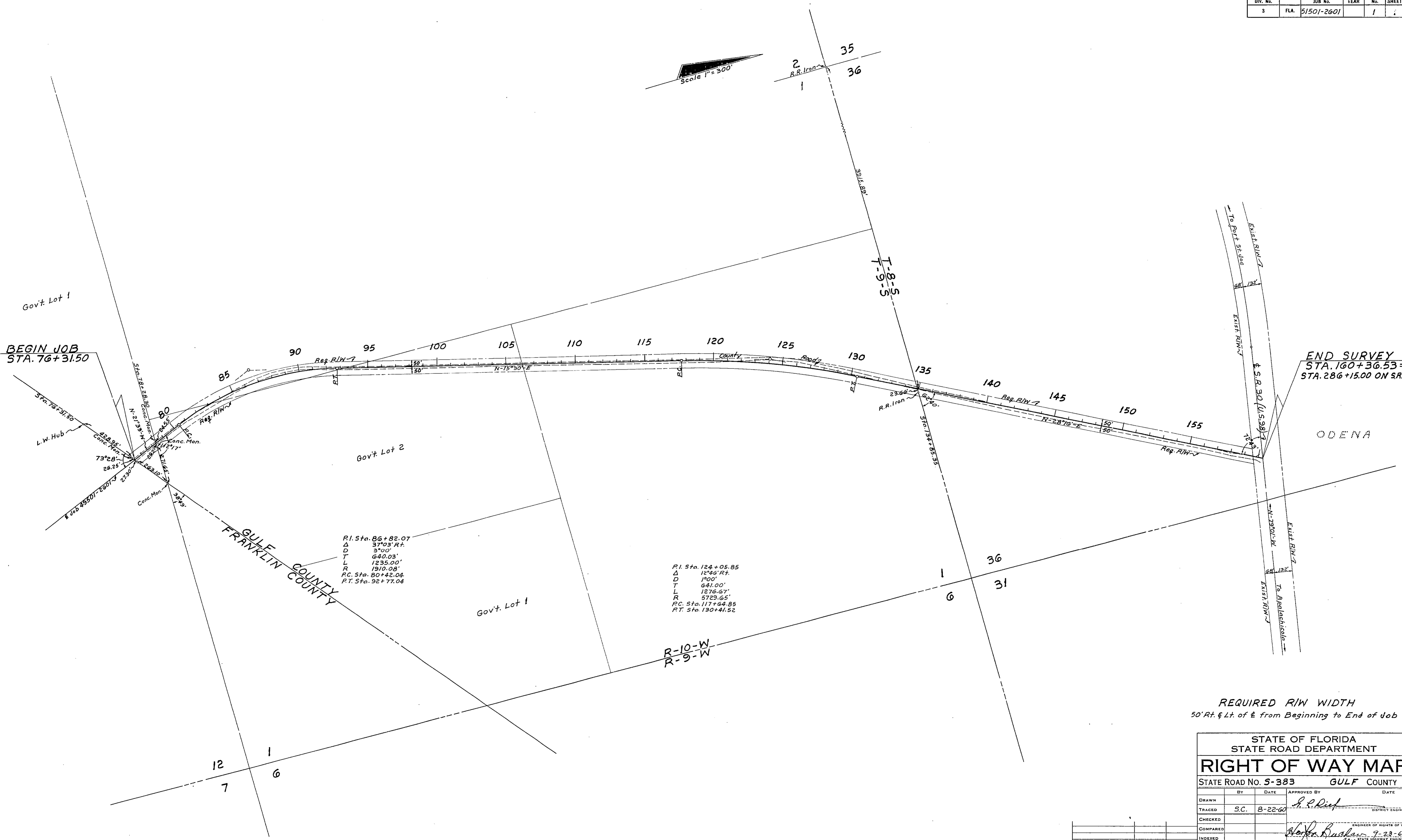


FED. ROAD DIV. NO.	STATE	SPE. AWD JOB NO.	FISCAL YEAR	SHEET NO.	TOTAL SHEETS
3	FLA.	51501-2601		1	1

Scale 1" = 300'



BEGIN JOB
STA. 76+31.50

END SURVEY
STA. 160+36.53 =
STA. 286+15.00 ON SR30

P.I. Sta. 86+82.07
 Δ 37°03' Rt.
 D 3700'
 T 640.03'
 L 1235.00'
 R 1910.08'
 P.C. Sta. 80+42.04
 P.T. Sta. 92+77.04

P.I. Sta. 124+05.85
 Δ 12°42' Rt.
 D 1900'
 T 641.00'
 L 1276.67'
 R 5729.65'
 P.C. Sta. 117+64.85
 P.T. Sta. 130+41.52

REQUIRED R/W WIDTH
50' Rt. & Lt. of & from Beginning to End of Job

STATE OF FLORIDA STATE ROAD DEPARTMENT			
RIGHT OF WAY MAP			
STATE ROAD NO. 5-383		GULF COUNTY	
BY	DATE	APPROVED BY	DATE
DRAWN		<i>P. P. Diet</i>	
TRACED	S.C.	8-22-60	DISTRICT ENGINEER
CHECKED			
COMPARED		<i>Walter Bushaw</i>	9-23-60 ENGINEER OF RIGHTS OF WAY
INDEXED			STATE HIGHWAY ENGINEER
SECTION. 51501-2601		SHEET 1 OF 1	

FRANKLIN CO. LINE TO ODENA