

EQUATION: SURVEY
 STA. 164+44.74 & SURVEY
 STA. 511+11.95 (S.R. 35, 1606)

NOTE: Agreement in DB635
 20' Strip for sewer
 Abandon by city of
 Lakeland Resolution

Note: Bearings shown hereon are grid; being calculated
 from those shown on S.R. 35, Section 16060.

UTILITY OWNERS
 POWER } CITY OF LAKELAND
 WATER }
 SANITARY }

EDGEWOOD DRIVE
 KEY MAP

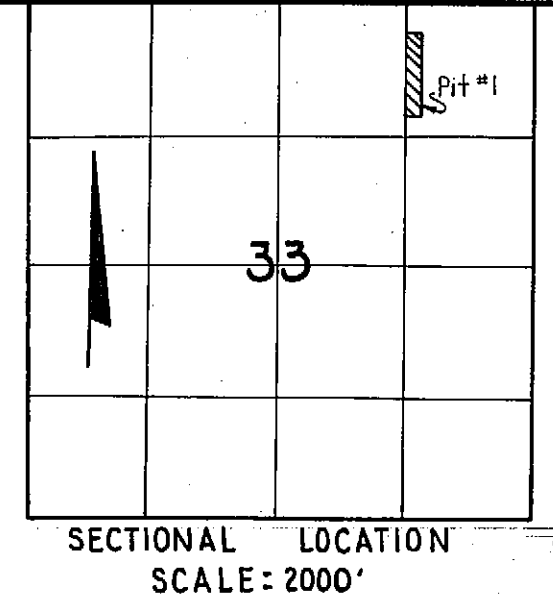
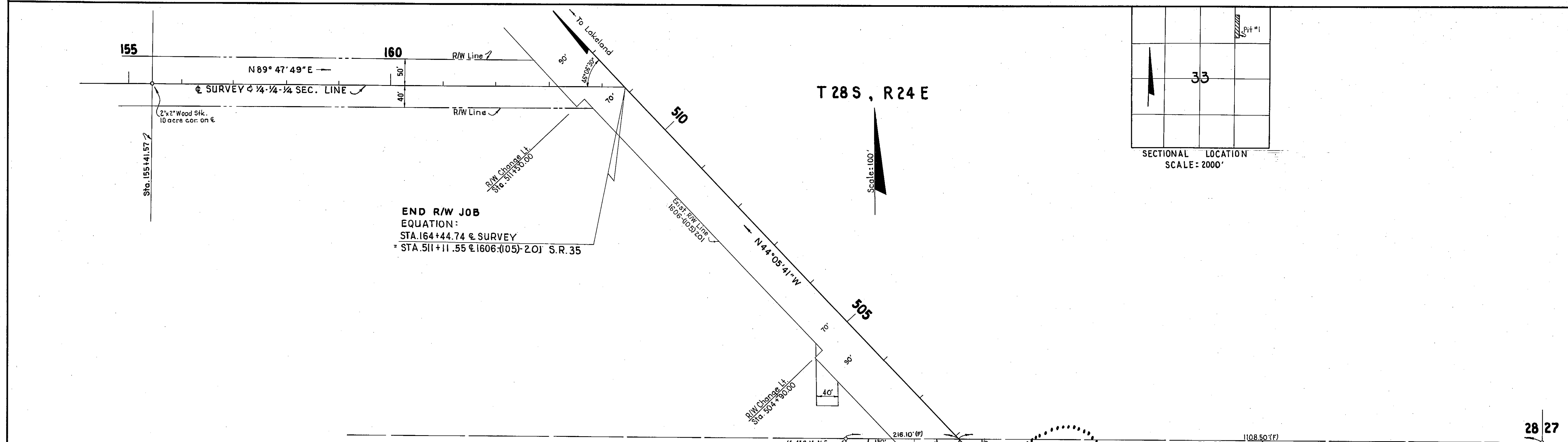
STATE OF FLORIDA
 STATE ROAD DEPARTMENT
RIGHT OF WAY MAP
 STATE ROAD NO. S-33-A POLK COUNTY

DRAWN	BY	DATE	APPROVED BY	DATE
TRACED			<i>H. M. Johnson</i>	
CHECKED				
COMPARED				
INDEXED				

SECTION. 16810-2150 SHEET 1 OF 1

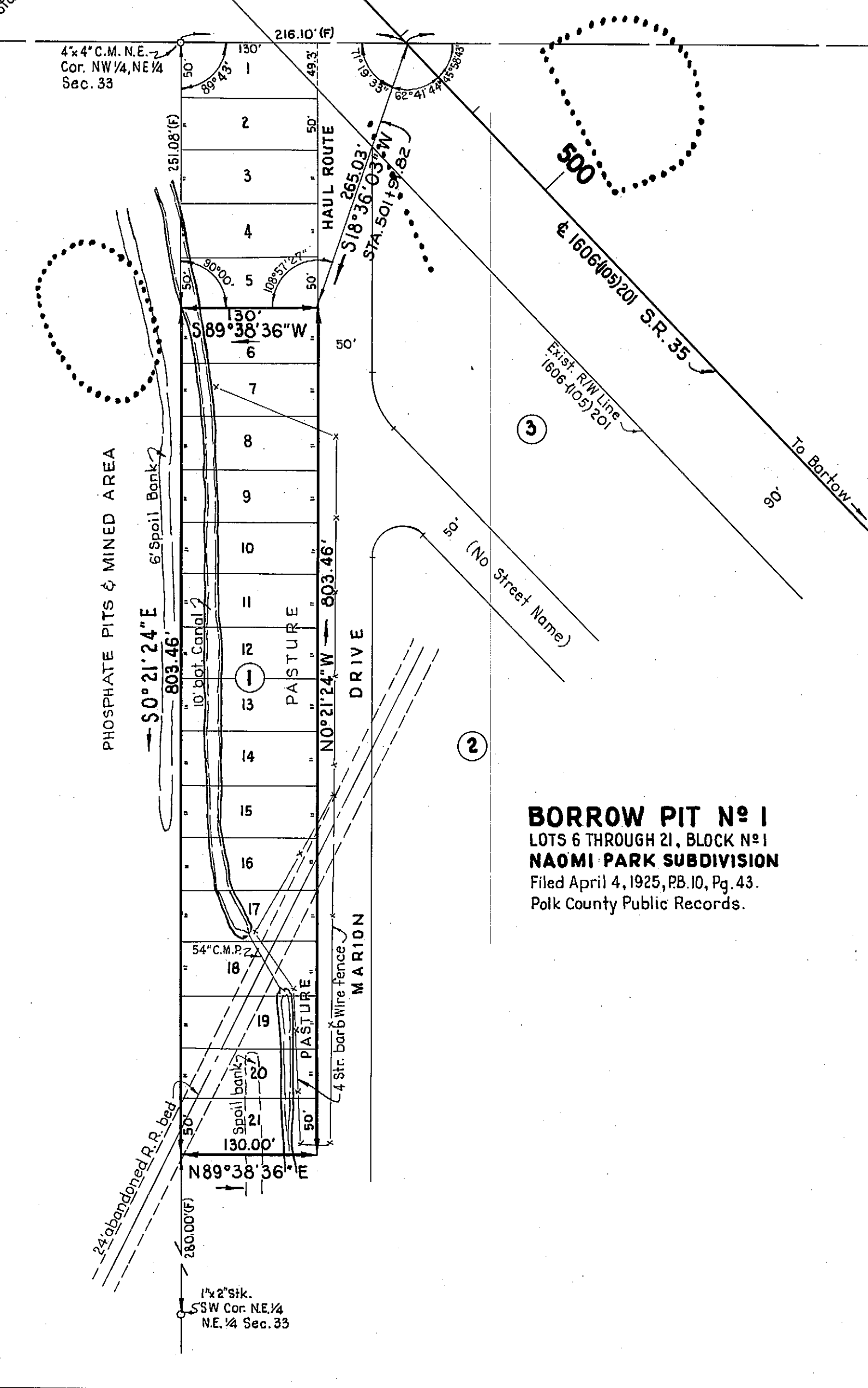
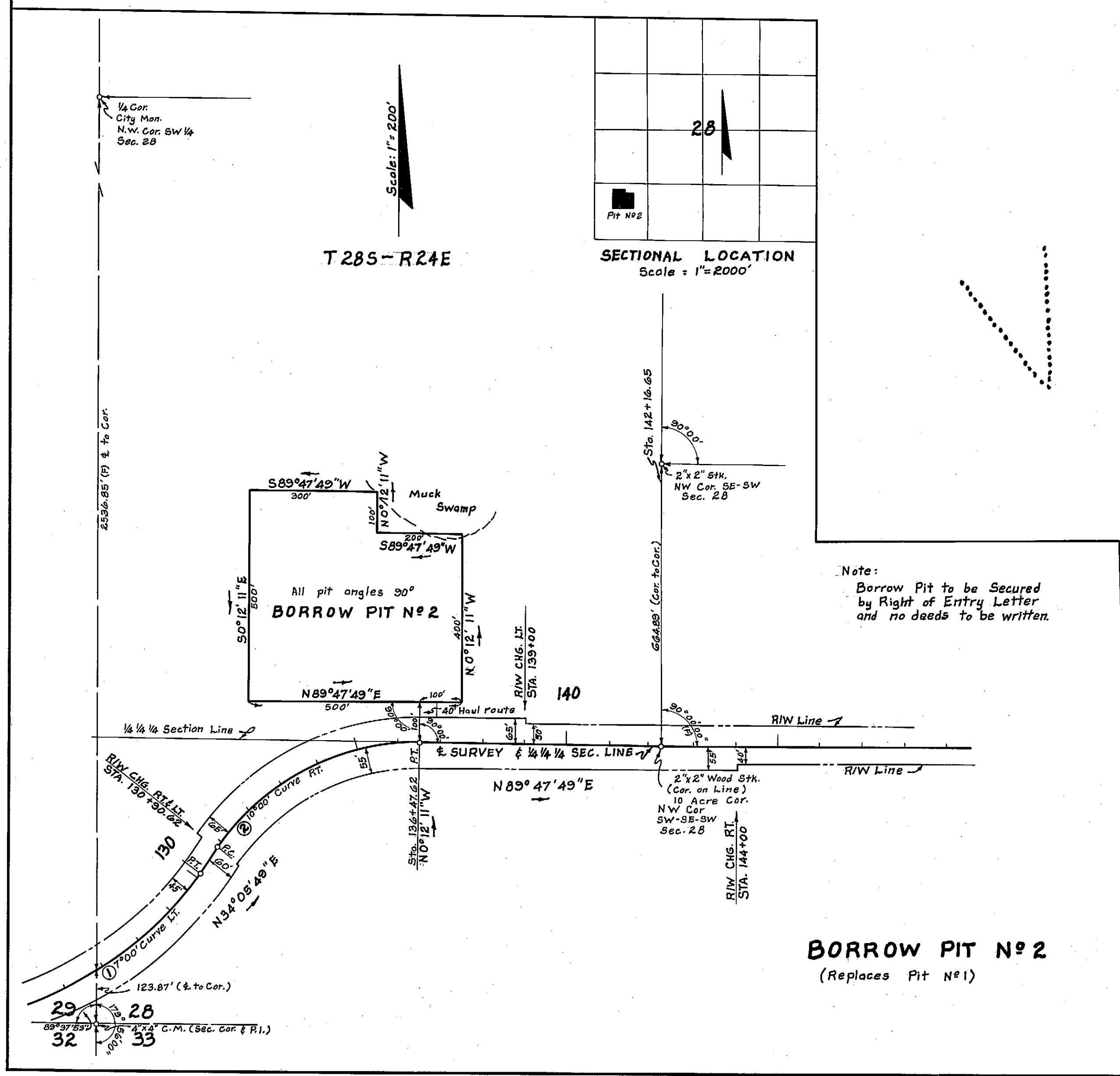
Prepared By:
W.K. DAUGHERTY & ASSOC.
 By: *W.E. Cothran*

REVISION	BY	DATE



END R/W JOB
EQUATION:
STA. 164+44.74 @ SURVEY
= STA. 511+11.55 @ 1606+105-201 S.R. 35

28 27
33 34



(f) indicates field dimensions.
**EDGEWOOD DRIVE
BORROW PIT No. 1**

Plotted from Looseleaf field Notes.

STATE OF FLORIDA STATE ROAD DEPARTMENT			
RIGHT OF WAY MAP			
STATE ROAD NO. S-33-A		POLK COUNTY	
BY	DATE	APPROVED BY	DATE
W.J.P.	4-23-62	<i>E. M. Johnson</i>	
TRACED	R. H. C.	4-24-62	DISTRICT ENGINEER
CHECKED	W. E. S.	4-25-62	
COMPARED		<i>Alfred Buckner</i>	ENGINEER OF RIGHTS OF WAY
INDEXED		5-1-62	STATE HIGHWAY ENGINEER
PIT No. 2	J.H.P.	5-17-62	
VOID PIT	R.C.B.	5-18-62	
REVISION	BY	DATE	