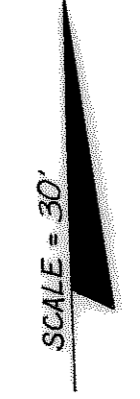
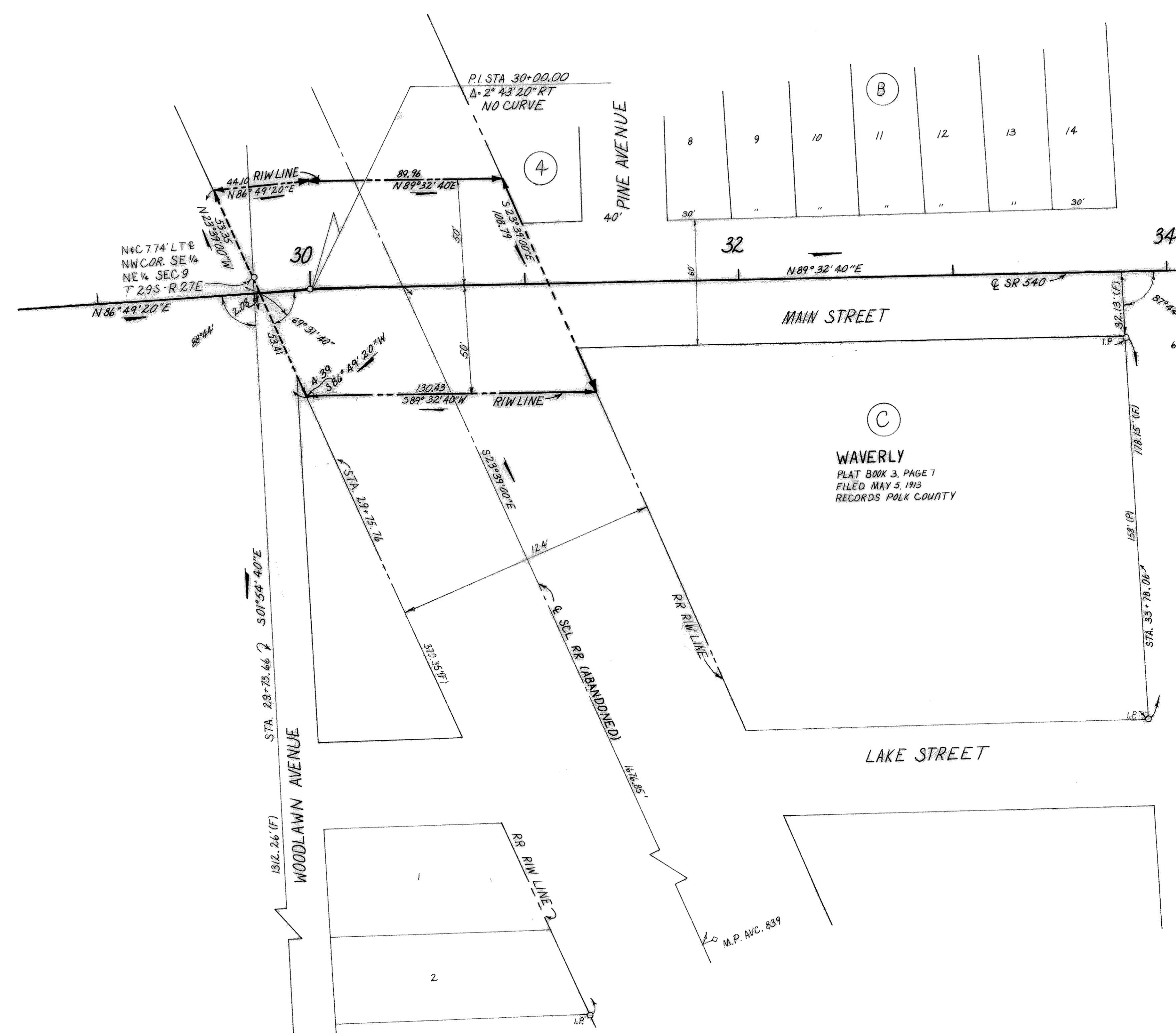


FED. ROAD DIV. NO.	STATE	F. A. PROJECT NO.	FISCAL YEAR	SHEET NO.
2	FLA.			



T29S-R27E
SEC 9



PURCHASE OF SCL RIR RIW
ON SR 540 AT WAVERLY
BEARINGS TAKEN FROM RIR TRACT MAP
PLOTTED FROM FROM FIELD BOOK 14125

STATE OF FLORIDA DEPARTMENT OF TRANSPORTATION			
RIGHT OF WAY MAP			
STATE ROAD NO. SR 540		POLK COUNTY	
BY	DATE	APPROVED BY	DATE
WJP	9-7-77	C. W. Monte de Oca	10-24-77
TRACED	TJW	DISTRICT ENGINEER	
CHECKED	J. Brown 10-24-77	Ch. E. ... 11-10-78 ENGINEER OF RIGHT OF WAY	
COMPARED		STATE HIGHWAY ENGINEER	
INDEXED		SECTION 16300-2505 SHEET 1 OF 1	

REVISION	BY	DATE

BL NO. 117815