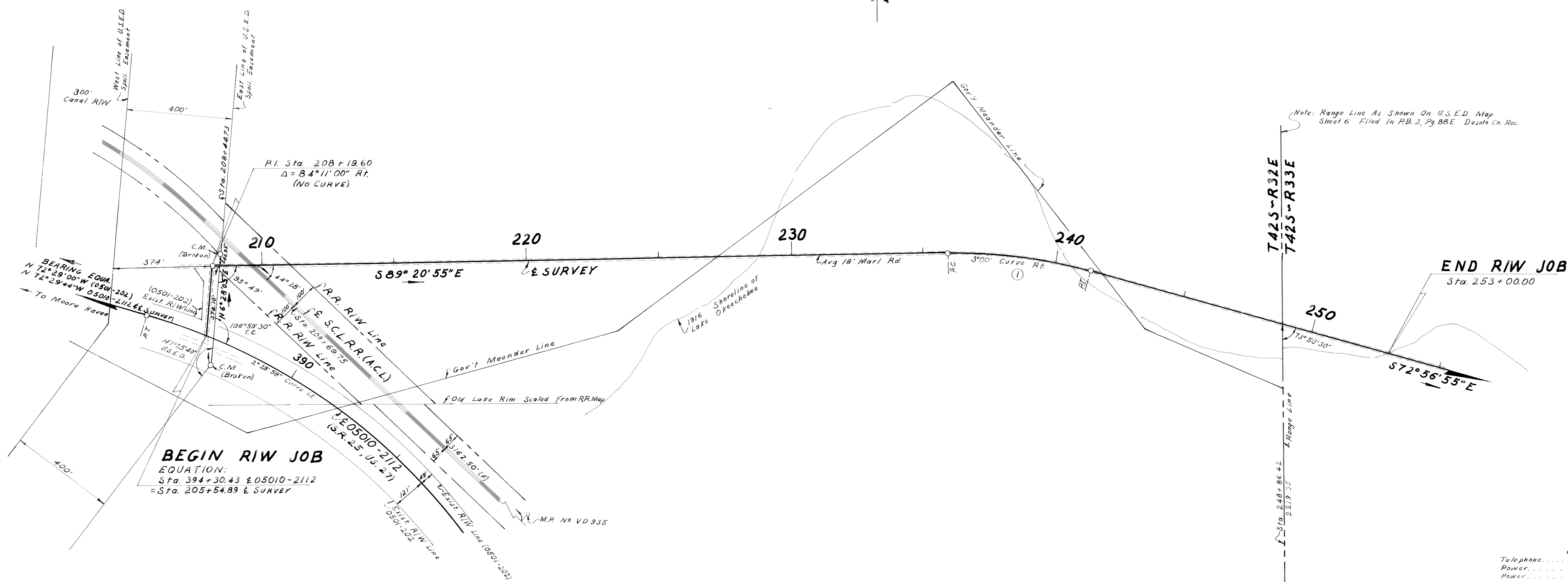
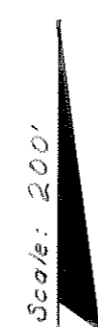


SEE INSERT SHEET 2

SEE INSERT SHEET 3

This Area No Longer A Part Of Lake Okechobee



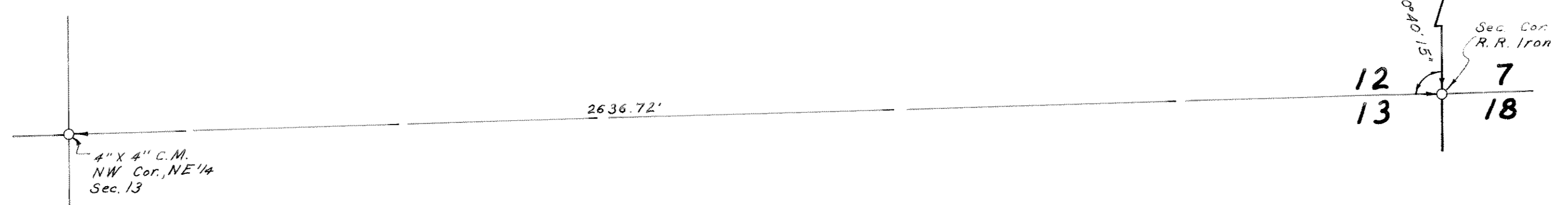
Note: Range Line As Shown On U.S.E.D. Map Sheet 6 Filed In P.B. 2, Pg 88E DeSoto Co. Rec.

BEGIN RIW JOB
 EQUATION:
 Sta. 394+30.43 & 05010-2112
 = Sta. 205+54.89 & SURVEY

END RIW JOB
 Sta. 253+00.00

UTILITY OWNERSHIP
 Telephone..... United Telephone Company
 Power..... Glades Electric Co-op
 Power..... Florida Power & Light

Note: Bearings are Grid being brought forward from 05010-2112.



CURVE DATA
 & SURVEY - 05010-2112
 P.I. Sta. 384+37.20
 Δ = 73° 02' 45" LT.
 D = 2° 28' 58"
 T = 1709.13'
 L = 2942.23'
 R = 2307.83'
 P.C. Sta. 367+28.07
 P.T. Sta. 396+70.30

P.I. Sta. 208+19.60
 Δ = 84° 11' 00" RT
 (NO CURVE)

①
CURVE DATA
 P.I. Sta. 238+63.68
 Δ = 16° 24' 00" RT
 D = 3° 00"
 T = 275.22'
 L = 548.67'
 R = 1909.86'
 P.C. Sta. 235+88.46
 P.T. Sta. 241+35.13

KEY MAP
 FROM S.R 25 NORTH & EAST TO DANIEL'S DRY

Gov't Meander Line Plotted From Gov't. Field Notes Dated 1911
 Topography plotted from field book number 385087.
 Alignment, Section Line ties plotted from field book number 385262.

STATE OF FLORIDA DEPARTMENT OF TRANSPORTATION			
RIGHT OF WAY MAP			
STATE ROAD No. 5-731		GLADES COUNTY	
BY	DATE	APPROVED BY	DATE
DRAWN L.R.J.	8-17-70	<i>[Signature]</i>	8-17-70
TRACED D.D.H.	8-18-70	<i>[Signature]</i>	8-18-70
CHECKED C.U.K.	8-26-70	<i>[Signature]</i>	8-26-70
COMPARED L.R.J.	12-30-70	<i>[Signature]</i>	12-30-70
INDEXED			
SECTION 05500-2601		SHEET 1 OF 1	

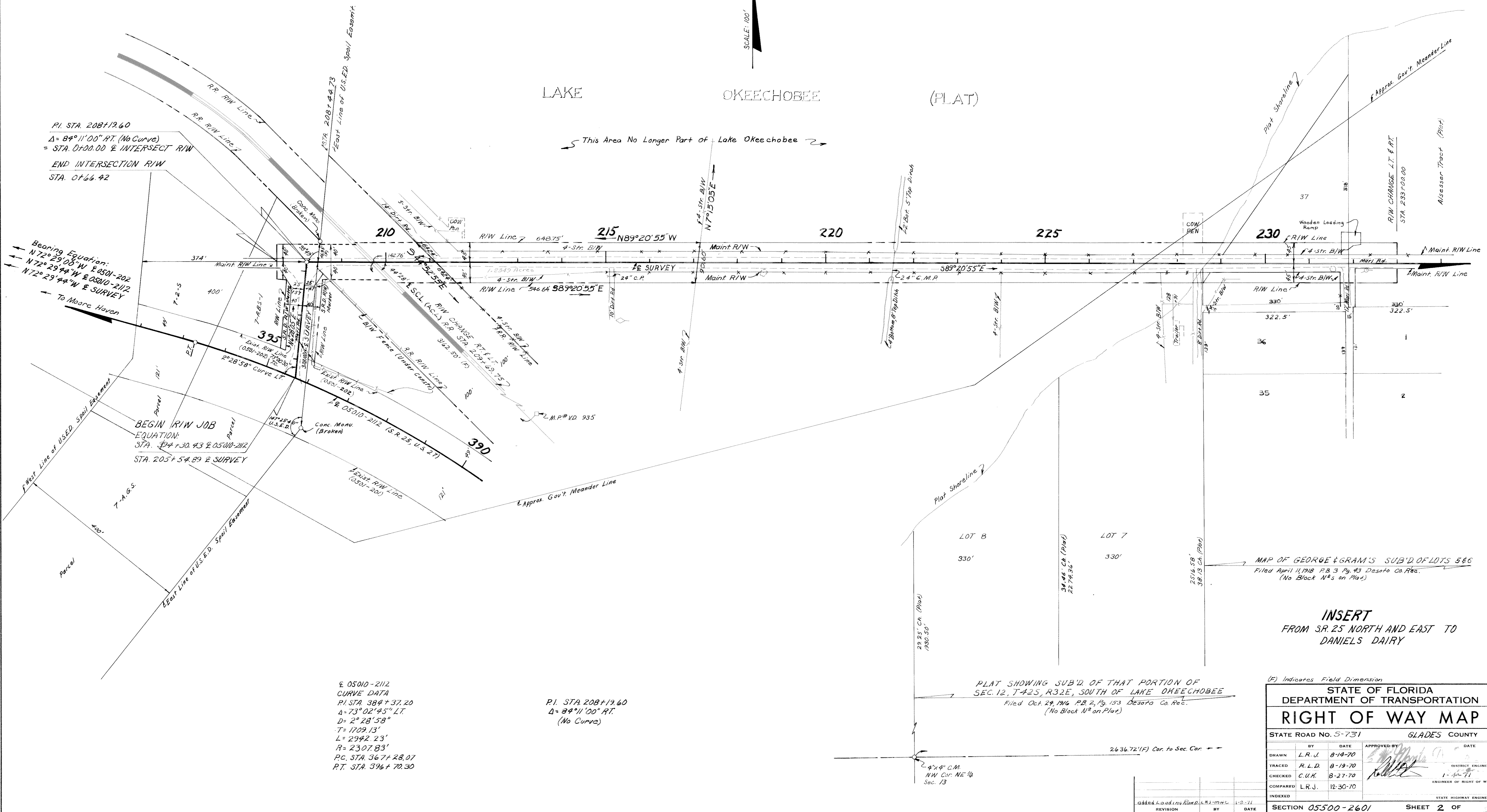
REVISION	BY	DATE

SEC. 12
T42S~R32E



LAKE OKEECHOBEE (PLAT)

This Area No Longer Part of Lake Okeechobee



P.I. STA. 208+19.60
 $\Delta = 84^{\circ}11'00''$ RT. (No Curve)
 = STA. 0+00.00 & INTERSECT RW
 END INTERSECTION RW
 STA. 0+66.42

Bearing Equation:
 $N 72^{\circ}29'06'' W \& OS010-202$
 $N 72^{\circ}29'44'' W \& OS010-2112$
 $N 72^{\circ}29'44'' W \& SURVEY$

BEGIN RW JOB
 EQUATION:
 STA. 384+30.43 & OS010-2112
 STA. 205+54.89 & SURVEY

& OS010-2112
 CURVE DATA
 P.I. STA. 384+37.20
 $\Delta = 73^{\circ}02'45''$ LT.
 $D = 2^{\circ}28'58''$
 $T = 1709.13'$
 $L = 2942.23'$
 $R = 2307.83'$
 P.C. STA. 367+28.07
 P.T. STA. 396+70.30

P.I. STA. 208+19.60
 $\Delta = 84^{\circ}11'00''$ RT.
 (No Curve)

PLAT SHOWING SUB'D OF THAT PORTION OF
 SEC. 12, T42S, R32E, SOUTH OF LAKE OKEECHOBEE
 Filed Oct. 27, 1916, P.B. 2, Pg. 153, DeSoto Co. Rec.
 (No Block N^o on Plat)

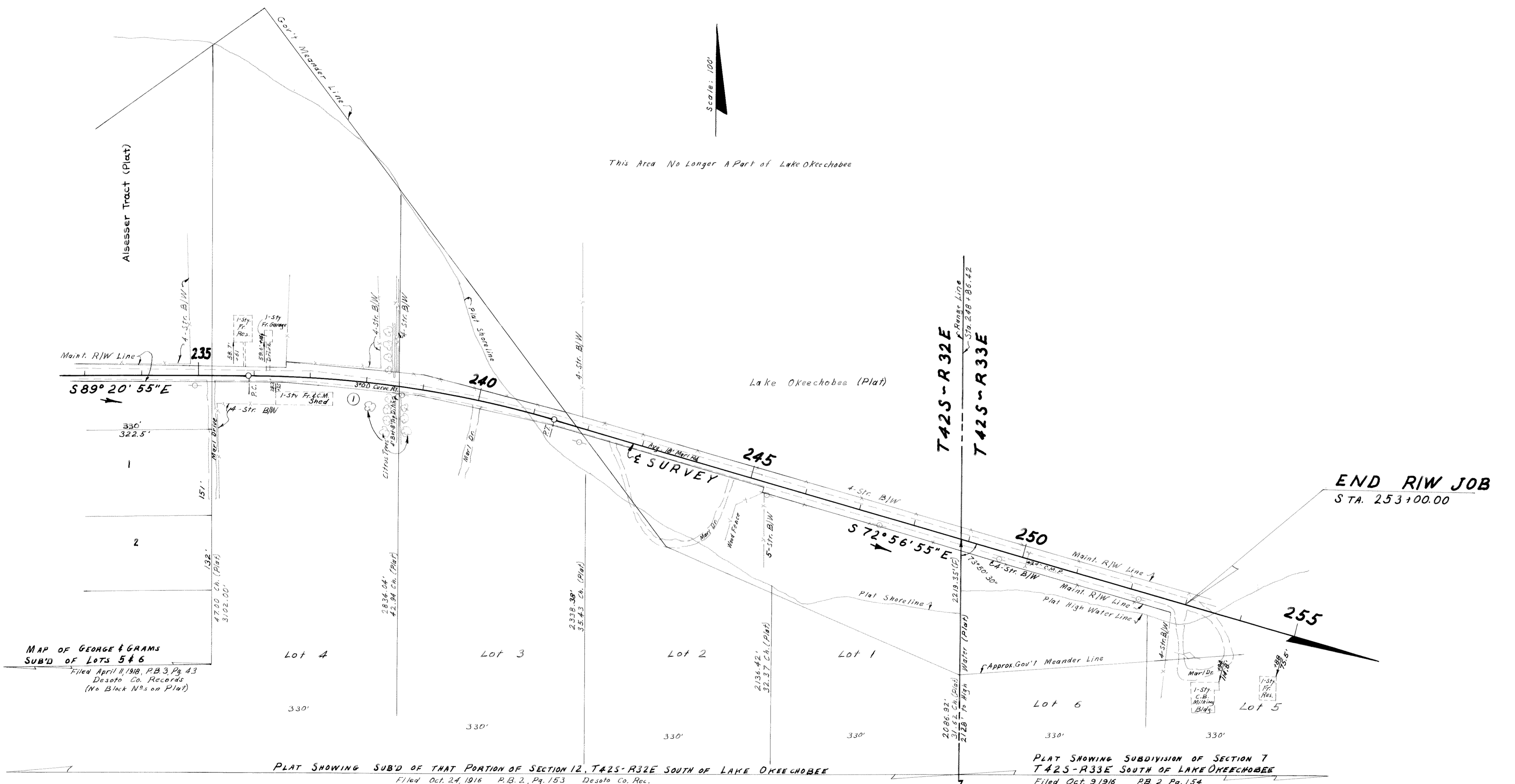
MAP OF GEORGE & GRAM'S SUB'D OF LOTS 5 & 6
 Filed April 11, 1918, P.B. 3, Pg. 43, DeSoto Co. Rec.
 (No Block N^o on Plat)

INSERT
 FROM SR 25 NORTH AND EAST TO
 DANIELS DAIRY

(F) Indicates Field Dimension

STATE OF FLORIDA DEPARTMENT OF TRANSPORTATION	
RIGHT OF WAY MAP	
STATE ROAD NO. 5-731	GLADES COUNTY
BY: L.R.J. DATE: 8-19-70	APPROVED BY: [Signature] DATE: 8-19-70
TRACED: R.L.D. DATE: 8-19-70	DISTRICT ENGINEER
CHECKED: C.U.A. DATE: 8-27-70	ENGINEER OF RIGHT OF WAY
COMPARED: L.R.J. DATE: 12-30-70	
INDEXED	
SECTION 05500-2601 SHEET 2 OF	

REVISION	BY	DATE



①
 CURVE DATA
 P.I. Sta. 238 + 63.68
 Δ = 16° 24' 00" RT
 D = 3° 00'
 T = 275' 22"
 L = 546.67'
 R = 1909.86'
 P.C. Sta. 235 + 88.46
 P.T. Sta. 241 + 35.13

INSERT
 FROM STATE ROAD 25 NORTH & EAST TO DANIELS DAIRY

(F) Indicates Field Dimension

STATE OF FLORIDA DEPARTMENT OF TRANSPORTATION			
RIGHT OF WAY MAP			
STATE ROAD No. 5-731		GLADES COUNTY	
BY	DATE	APPROVED BY	DATE
DRAWN L.R.J.	8-17-70	<i>[Signature]</i>	
TRACED D.D.H.	8-17-70	DISTRICT ENGINEER	
CHECKED C.U.H.	8-28-70	<i>[Signature]</i>	1-8-71
COMPARED L.R.J.	12-30-70	ENGINEER OF RIGHT OF WAY	
INDEXED		STATE HIGHWAY ENGINEER	

REVISION	BY	DATE