

BEGIN R/W JOB
 STA 100+00.00 & SURVEY
 STA 600+34.66 & 01540-2601

01540-2601
 CURVE DATA
 P.I. STA. 600+08.59
 $\Delta = 4^{\circ}37'20''$ RT
 $D = 5^{\circ}00'00''$
 $T = 470.24'$
 $L = 892.44'$
 $R = 1145.32'$
 PC STA. 595+38.35
 PT STA. 604+30.79

P.I. STA. 125+04.98
 $\Delta = 0^{\circ}00'15''$ LT
 (NO CURVE)

CURVE No ①
 P.I. STA. 151+39.47
 $\Delta = 1^{\circ}35'00''$ RT
 $D = 0^{\circ}20'00''$
 $T = 237.52'$
 $L = 475.00'$
 $R = 17,188.74'$
 PC STA. 149+01.95
 PT STA. 153+76.95

CURVE No ②
 P.I. STA. 204+60.80
 $\Delta = 2^{\circ}31'00''$ RT
 $D = 0^{\circ}30'00''$
 $T = 251.71'$
 $L = 503.33'$
 $R = 11,459.16'$
 PC STA. 202+09.09
 PT STA. 207+12.42

UTILITY OWNERS
 Power ----- Florida Power & Light Co.
 Telephone ----- United Telephone System

Bearings are same as shown on 01540-2601

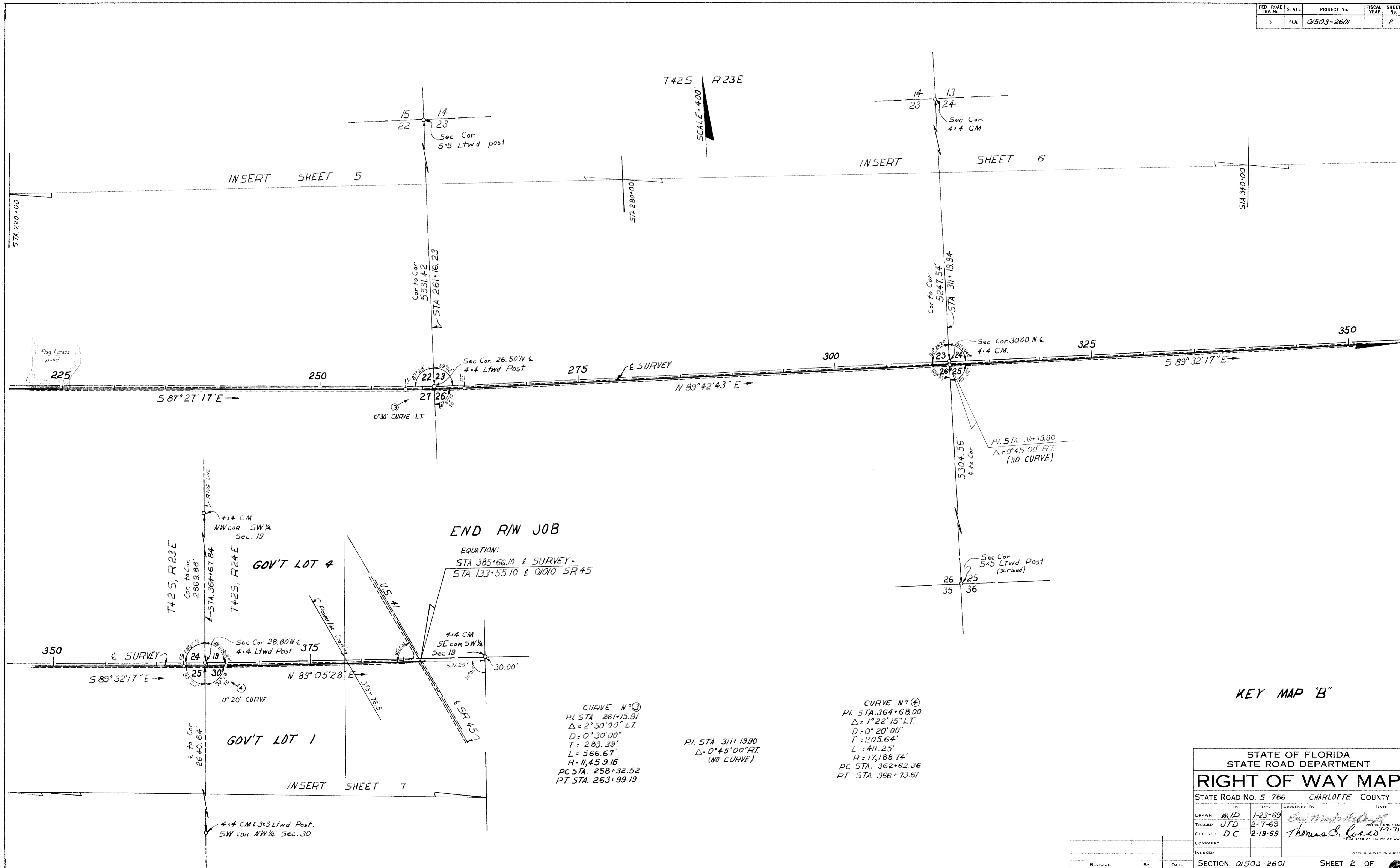
KEY MAP "A"
 SR 5-765 TO SR 45

Topog-Utilities Plotted From Field Book 868823
 Align - Section Lines Plotted From Field Book 868827

STATE OF FLORIDA STATE ROAD DEPARTMENT	
RIGHT OF WAY MAP	
STATE ROAD NO. 5-766	CHARLOTTE COUNTY
BY W.J.P.	DATE 1-22-69
TRACED J.T.D.	DATE 2-5-69
CHECKED D.C.	DATE 2-19-69
COMPARED	
INDEXED	
APPROVED BY <i>Thomas C. Kues</i> DISTRICT ENGINEER	
ENGINEER OF RIGHTS OF WAY	
STATE HIGHWAY ENGINEER	

REVISION	BY	DATE

SECTION 01503-2601 SHEET 1 OF 1



KEY MAP 'B'

STATE OF FLORIDA STATE ROAD DEPARTMENT			
RIGHT OF WAY MAP			
STATE ROAD No. 5-766		CHARLOTTE COUNTY	
BY	DATE	APPROVED BY	DATE
DRAWN: WJP	1-23-69	<i>Tom Mack...</i>	
TRACED: JTD	2-7-69		
CHECKED: DC	2-19-69	<i>Thomas C. Reed</i>	7-7-71
COMPARED:			
INDEXED:			
REVISION		BY	DATE
SECTION 01503-2601		SHEET 2 OF	