

District Urban Area Boundary and Functional Classification Process Webinar

June 21st, 2023





Transportation Data Inventory



Joel Worrell

Section Manager/
Contract Manager
(850) 414-4715
Joel.Worrell@dot.state.fl.us



Jerry Scott

Multimodal Data
System Coordinator
(850) 414-4714
Jerry.Scott@dot.state.fl.us



Makarand Gawade

Transportation
Project Planner
Makarand.Gawade@hdrinc.com



Brittany Wood

Transportation
Data Specialist
Brittany.Wood@hdrinc.com

Overview



Background

Update on Procedure and Handbook

Urban Area Boundary (UAB) Adjustment Guidelines
and Considerations

Functional Classification (FC) Guidelines and
Considerations

UAB-FC Do's and Don'ts

Questions

Background



Defining Urban Area Boundaries



United States®
Census
2020

**Finalized Urban
Areas Released
December 2022**

Urban Areas are revised every 10 years based on population counts from decennial census.

FHWA Urban Area Boundaries are adjusted to be consistent with transportation needs.

Functional classification reviewed and updated in conjunction with adjusted urban boundaries.

1790

3,929,214

1800

5,308,483

1850

23,191,876

1900

76,212,168

1950

151,325,798

2000

281,421,908

2010

308,745,538

Defining Functional Classification

- Integrated review of Urban Area Boundaries and Functional Classification of their road system.
- Functional classification defines how roadway segments function through the roadway network.

Functional Classification	Florida Mileage	Florida VMT
Principal Arterial-Interstate	1,495	114,421,262
Principal Arterial-Freeways & Expressways	776	46,702,477
Principal Arterial-Other	6,572	146,887,000
Minor Arterial	6,424	89,136,097
Major Collector	10,492	64,562,113
Minor Collector	5,084	14,749,883
Local	92,809	119,613,433
Total	123,652	596,072,265

Process Benefits and Impacts



Project Funding

- Supports the determination of Federal-Aid Eligibility for roadways, bridge, and transit funding:
 - Surface Transportation Block Grant Program (STBG) Apportionments.
 - Local Agency Programs (LAP).
 - Federal Transit Administration (FTA) Apportionments.
- Federal Transportation System Designations (NHS, STRAHNET).
- Congressional Districts.

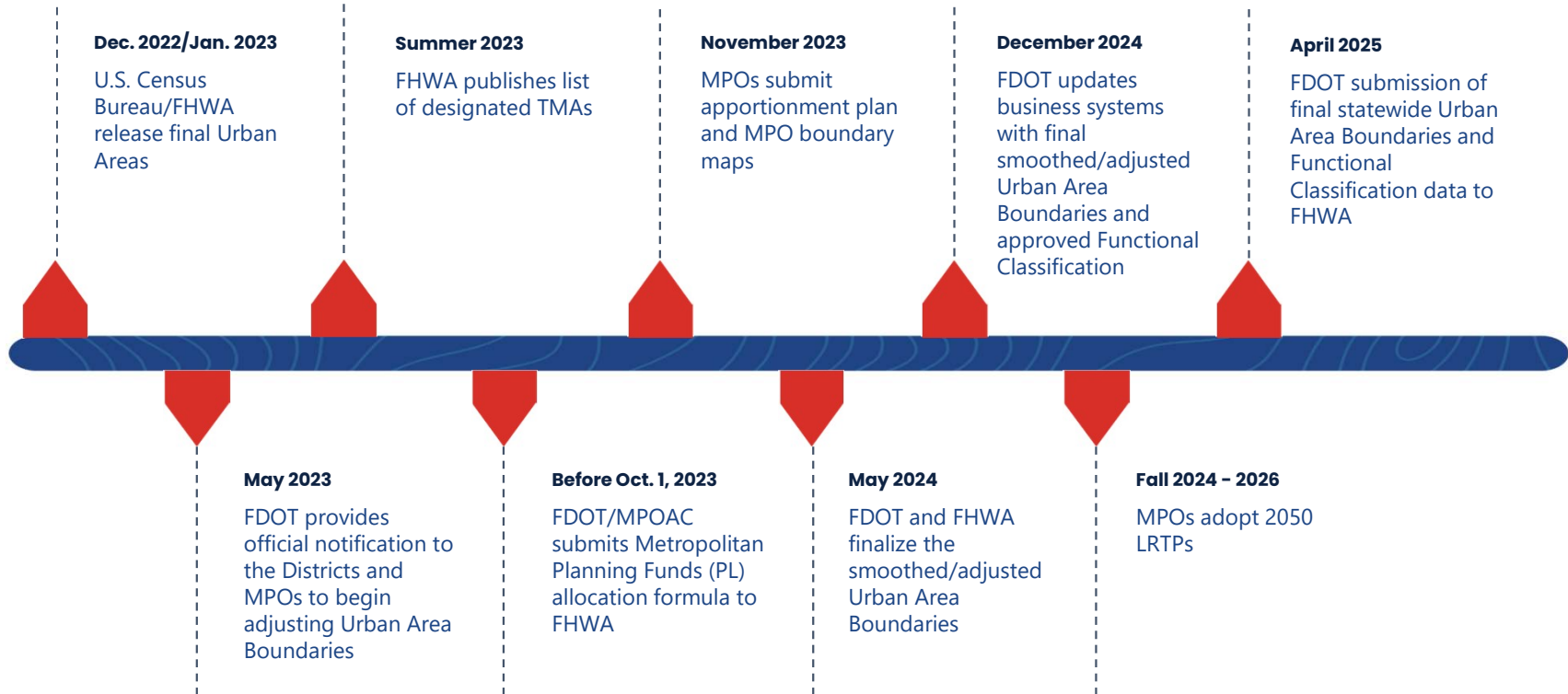
Programs and Partners

- Supports the identification of Transportation Management Areas (TMAs).
- MPO Creation and Boundary Adjustments.
- TIP and STIP updates.
- Highway Design Standards.
- Context Classifications.

Data Analysis

- Urban/Rural Classifications.
- Functional Classification.
- Updates to all Enterprise RCI/LRS Data and GIS Mapping Products.
- Traffic Analysis Zones.
- Vehicle Miles Traveled Estimates.

Process Timeline



Roles and Responsibilities



Federal Highway Administration (FHWA)

- Provides Urban Area boundaries (UABs) and Functional Classification designation guidance.
- Reviews and approves final adjusted UABs and Functional Classification designations applications made by FDOT and local entities.

FDOT Central Office

- Provides finalized 2020 UABs from US Census Bureau to Districts.
- Develops procedures, handbooks, guidance, and training on the UAB adjustment and functional classification update process for Districts.
- Coordinates CO review and approval of UAB maps and functional classification applications with FHWA.
- Updates FDOT enterprise systems and submits official data to the FHWA Highway Performance Monitoring System (HPMS).

Districts

- Receives UAB and Functional Classification data from FDOT's TDA Office.
- Coordinates reviews with local agency partners and regional workshops with MPOs.
- Coordinates proposed changes from planning partners and acquires signatures from local agencies.
- Performs functional classification reviews with local entities.
- Delivers proposed changes of UAB maps, data, and functional classification applications for FDOT TDA Office review and FHWA submission.

Metropolitan/Transportation Planning Organizations (MPOs/TPOs)

- Updates its Metropolitan Planning Area (MPA) boundary maps in consultation with the District, which is also known as the MPO Boundary Map.
- Updates its Apportionment Plan, which is the MPO's voting membership structure.
- Coordinates with local governments and the District on the process to adjust the functional classification of roadways within the MPO area.

Update on Procedure and Handbook



Procedure Update (525-020-311)

Published May 2023

Updated responsible office for Urban Area Review, e.g., TDA Office.

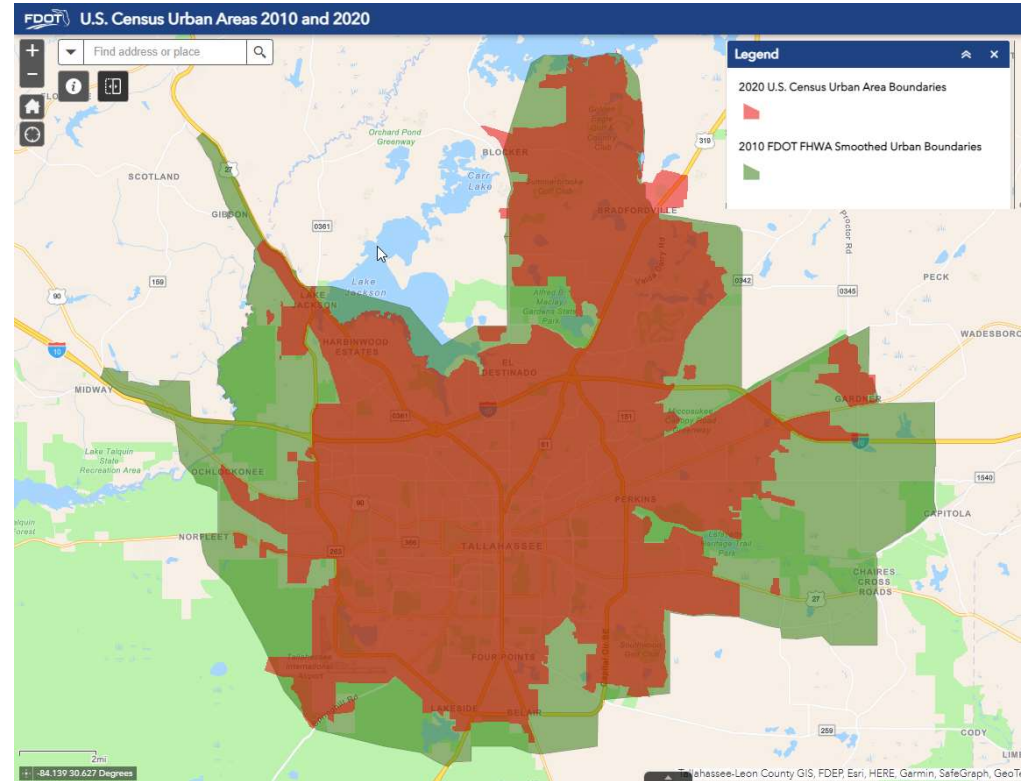
Included new U.S. Census Bureau criteria/definitions.

Updated FHWA programming preferences to designation criteria.

Added process to obtain Governor's delegation for FDOT Secretary (or delegate) signature to sign and approve all maps adjustments.

Clarified Urban Area adjustment process and Functional Classification Review process steps:

- Added interim update guidance for modifications of Functional Classification updates between decennial census cycles.
- Added standardization of map package requirements.





Ready early-July (to include):

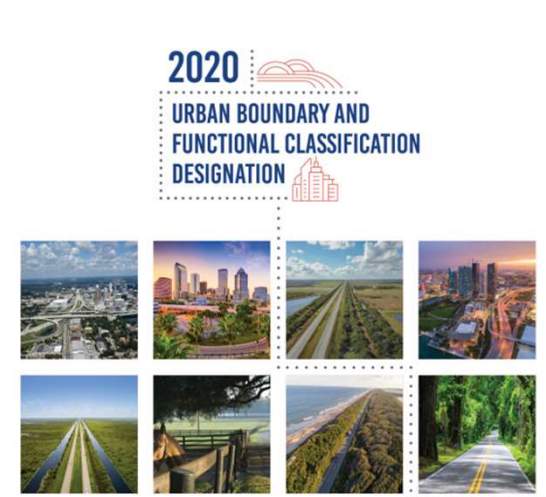
Included new U.S. Census Bureau criteria/definitions.

Best practices.

GIS Formatting examples.

Flow Charts – Urban Area Boundary and Functional Classification.

Map Templates/Requirements.



Urban Area Boundary and Functional Classification Update Process



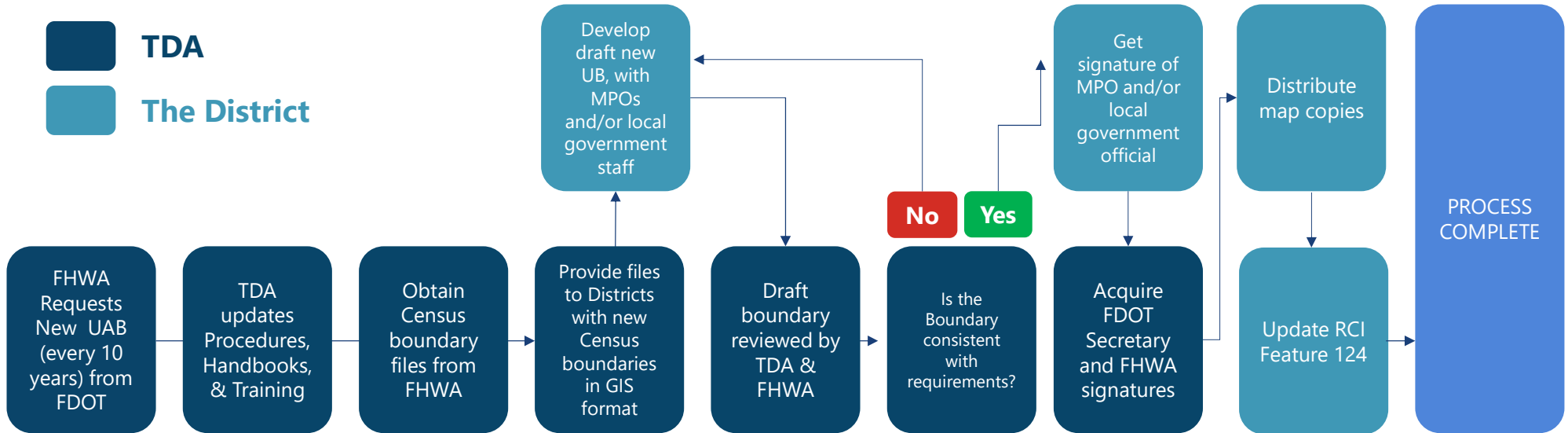
FHWA Urban Area Boundary Adjustment Recommendations



- Recommended 12-month schedule following Census release of Urban Area Boundaries.
- At a minimum – confirm Census boundaries are adequate.
- Build/share understanding of game plan.
- Generate maps and share electronically – **use GIS.**
- Encourage/work towards timely delivery of revisions.

Event	Months Following Release of 2020 Census Urban Area boundaries
FHWA issues transmittal letter.	Month 1
Begin adjusted urban area boundary update process.	Month 1
DOT works with planning partners to define adjusted urban area boundaries.	Month 3-9
Provide draft final data and/or maps to FHWA Division Office for review.	Month 10
DOT incorporates Review Comments.	Month 11
DOT submits adjusted urban area boundaries to FHWA Office of Planning.	Month 12

Urban Area Boundary Process Flow Chart



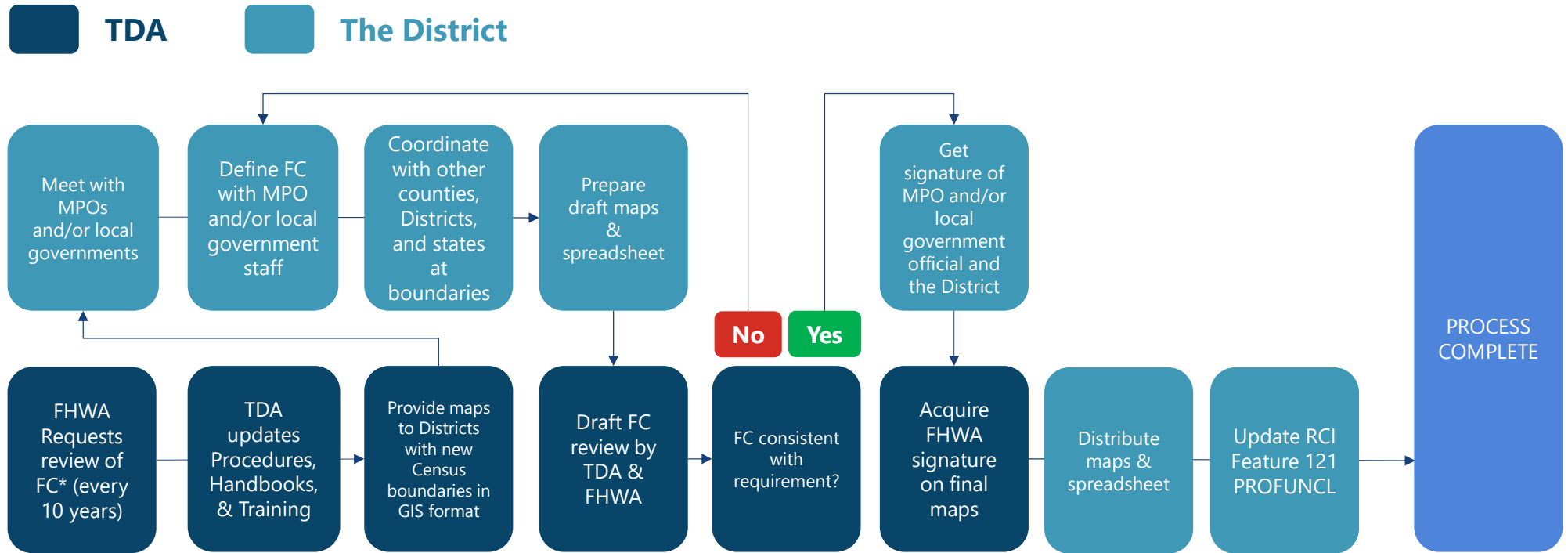
FHWA Functional Classification Review Recommendations



- Create a multi-agency review team - **stay in touch.**
- Build and share understanding of game plan.
- Generate maps and share electronically – **use GIS.**
- Encourage/work towards timely delivery of Functional Classification revisions.

Event	Month Following FHWA Adjusted Urban Area Boundary Approval
State DOT launches the formal Functional Classification update process after FHWA approves the State's adjusted urban area boundaries.	Month 1
State DOT works with planning partners to review and propose changes to the functional classification of its roadways.	Months 2-17
State DOT gathers and processes all proposed function classification changes and submit draft final data and/or maps to FHWA division office for review.	Months 18-20
DOT incorporates updates into planning process and related databases, to ensure submittal of updated functional classification in upcoming June 15 th HPMS submittal.	Months 22-24

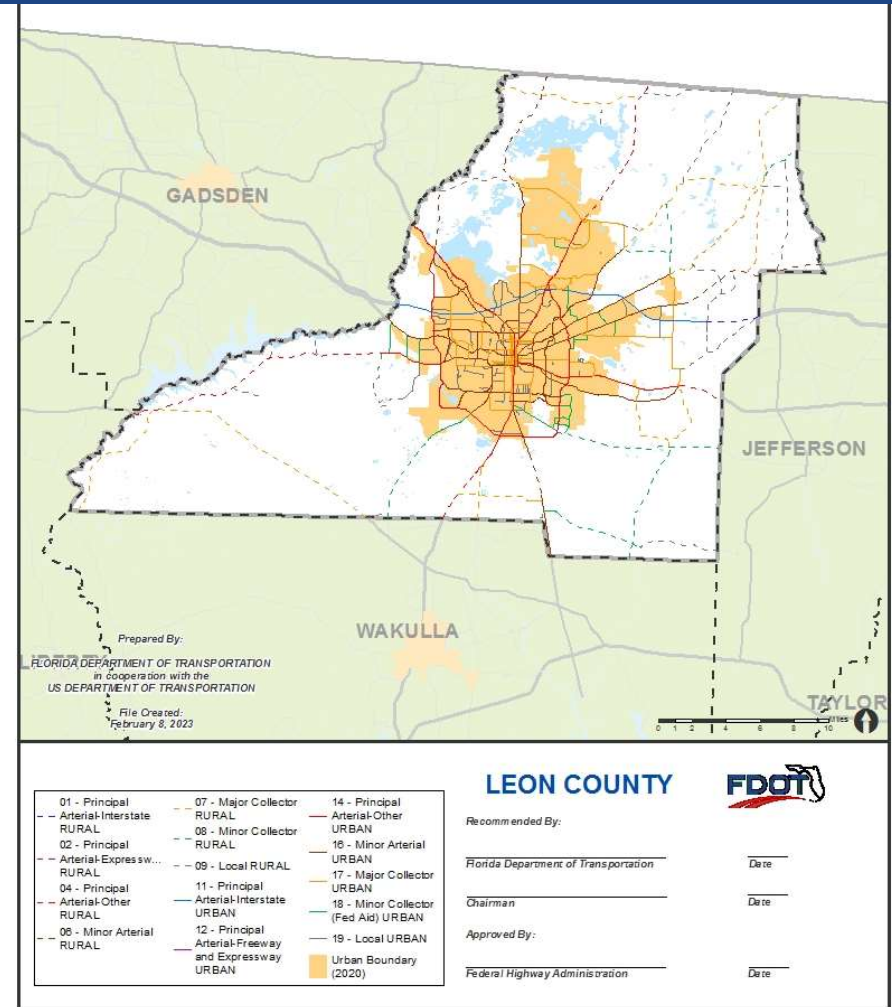
Functional Classification Process Flow Chart



FC* = Functional Classification

UABFC Map Requirements

- Adhere to line symbology required by FDOT.
- Coordinate projection system: EPSG:26917: NAD83/UTM zone 17N.
- Legend detailing urban boundary and functional classification symbology.
- 'Recommended by:' Signature/Date blocks for FDOT and the Local Entity.
- 'Approved by:' Signature/Date block for FHWA.
- Include colored FDOT logo.
- File created date.
- Prepared by and in cooperation with statement.
- County title.
- Include a compass rose.
- Include map scale in miles.
- Provide separate inset maps of main urban areas within the county.





- Provide an adjusted urban area boundary dataset to TDA within an ESRI Geodatabase/Feature Class format.
- Provide data with the EPSG:26917: NAD83/UTM zone 17N coordinate projection system.

Field Name	Data Type	Length	Description
YEARRECORD	Small Integer	4	Year for which the data apply (2020)
URBANCODE	Small Integer	5	Census Urban Code
URBANNAME	String	100	Urban Name
CENSUSPOP	Double	8	Census Population
CENSUSHH	Double	8	Census Housing Units
CENSUSLANDAREA	Double	8	Census Land Area (in square miles)
ADJUSTEDUABLANDAREA	Double	8	Adjusted Urban Area Boundary Area (in square miles)
SHAPE	Polygon	NA	Polygon Feature

Functional Classification Reviews

- GIS geodatabase format required to perform an expedited review.
- District submissions of Functional Classification must include the following supporting data elements:
 - Roadway ID
 - Begin MP
 - End MP
 - AADT
 - Number of Lanes
 - Refer to form for required attributes.
- TDA will finalize these elements at a later date.

STATE OF FLORIDA, DEPARTMENT OF TRANSPORTATION
APPLICATION FOR FUNCTIONAL CLASSIFICATION CHANGE

Date: _____

Sponsoring Agency: FL Dept of Transportation Phone Number: _____
 Contact Person: _____ E-mail: _____

Roadway Name: _____ Section Number: _____
 From: _____ From Mile Post: _____
 To: _____ To Mile Post: _____

If 1-Way, Number of Lanes: 1 2 3 4
 If 2-Way, Number of Lanes: 2 4 6 8

AADT and Year: _____ Status of Roadway: Not Currently Functionally Classified
 Currently Functionally Classified

FDOT Access Mgmt. Classification: 1 2 3 4 5 6 7 8 Not classified

Source: _____ Speed Limit (miles per hour): _____

Current Functional Classification:

<input type="checkbox"/> Rural Principal Arterial - Interstate	<input type="checkbox"/> Urban Principal Arterial - Interstate	<input type="checkbox"/> Rural Principal Arterial - Freeways and Expressways	<input type="checkbox"/> Urban Principal Arterial - Freeways and Expressways
<input type="checkbox"/> Rural Principal Arterial - Other	<input type="checkbox"/> Urban Principal Arterial - Other	<input type="checkbox"/> Rural Minor Arterial	<input type="checkbox"/> Urban Minor Arterial
<input type="checkbox"/> Rural Major Collector	<input type="checkbox"/> Urban Major Collector	<input type="checkbox"/> Rural Minor Collector	<input type="checkbox"/> Urban Minor Collector
<input type="checkbox"/> Rural Local	<input type="checkbox"/> Urban Local		

Proposed Functional Classification:

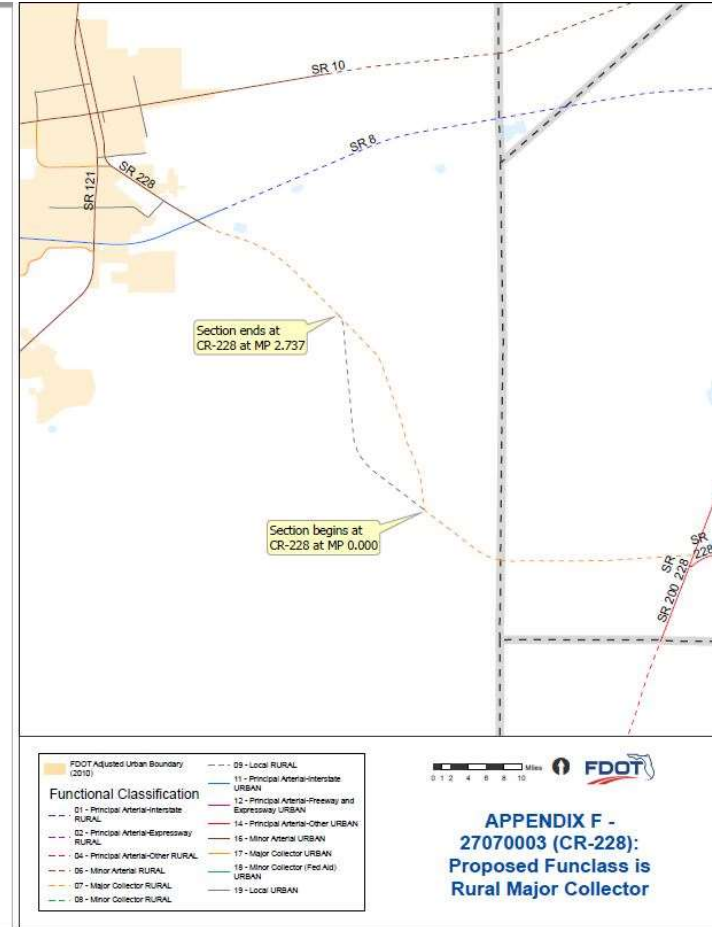
<input type="checkbox"/> Rural Principal Arterial - Interstate	<input type="checkbox"/> Urban Principal Arterial - Interstate	<input type="checkbox"/> Rural Principal Arterial - Freeways and Expressways	<input type="checkbox"/> Urban Principal Arterial - Freeways and Expressways
<input type="checkbox"/> Rural Principal Arterial - Other	<input type="checkbox"/> Urban Principal Arterial - Other	<input type="checkbox"/> Rural Minor Arterial	<input type="checkbox"/> Urban Minor Arterial
<input type="checkbox"/> Rural Major Collector	<input type="checkbox"/> Urban Major Collector	<input type="checkbox"/> Rural Local	<input type="checkbox"/> Urban Minor Collector
<input type="checkbox"/> Deleted (Removed)	<input type="checkbox"/> Urban Local		

Justification for Proposed Change:

Please attach a location map separately when submitting this application, include Roadway ID's, Road Number symbols and Functional classification color coding of roadway segments.

Recommended By:

Local Government/Metropolitan Planning Organization (MPO) Chairman	_____	Date	_____
FDOT - District Office	_____	Date	_____
FDOT - Central Office	_____	Date	_____
Approved By:	_____	Date	_____
Federal Highway Administration	_____	Date	_____



Urban Area Boundary Adjustment Guidelines and Considerations



Recommended Statewide Datasets



Suggested GIS Layer	Name of Dataset	Recommended Official Statewide Data Source
Land use, including areas of recent growth	Parcel Data	Florida Department of Revenue
	Generalized Future Land Use	Florida Geographic Data Library
	Land Use/Land Cover	Florida Department of Environmental Protection/ Water Management Districts
Roadway network	RCI LRS	Florida Department of Transportation
Railroads	FDOT Rail LRS	Florida Department of Transportation
Transit routes	Florida Transit Information System	Florida Transit Data Exchange
Ports (airports, seaports)	SIS Facilities	Florida Department of Transportation
	Airports	Bureau of Transportation Statistics
	Airport Parcels	Florida Department of Revenue
Military installations	Military Parcels	Florida Department of Revenue
Other significant traffic generators	Freight Facilities (Commercial, Residential, Industrial)	Florida Department of Transportation
Hydrography	National Hydrographic Dataset - Flowlines	Florida Department of Environmental Protection/ Water Management Districts
	National Hydrographic Dataset - Waterbodies	Florida Department of Environmental Protection/ Water Management Districts
	FDOT Aerials	Florida Department of Transportation
Municipal boundaries	Cities	Florida Geographic Data Library
Digital ortho-photography	FDOT Aerials	Florida Department of Transportation

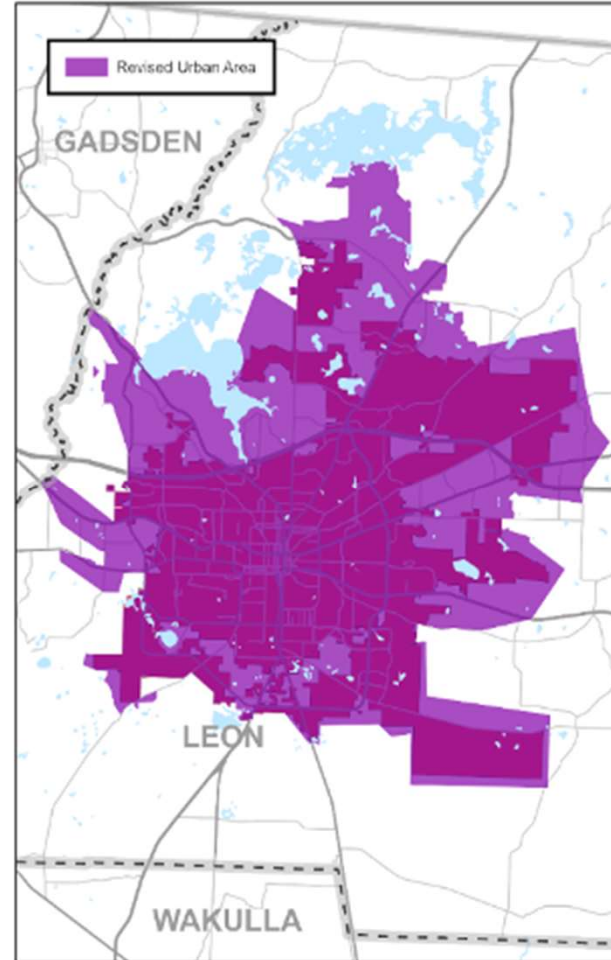
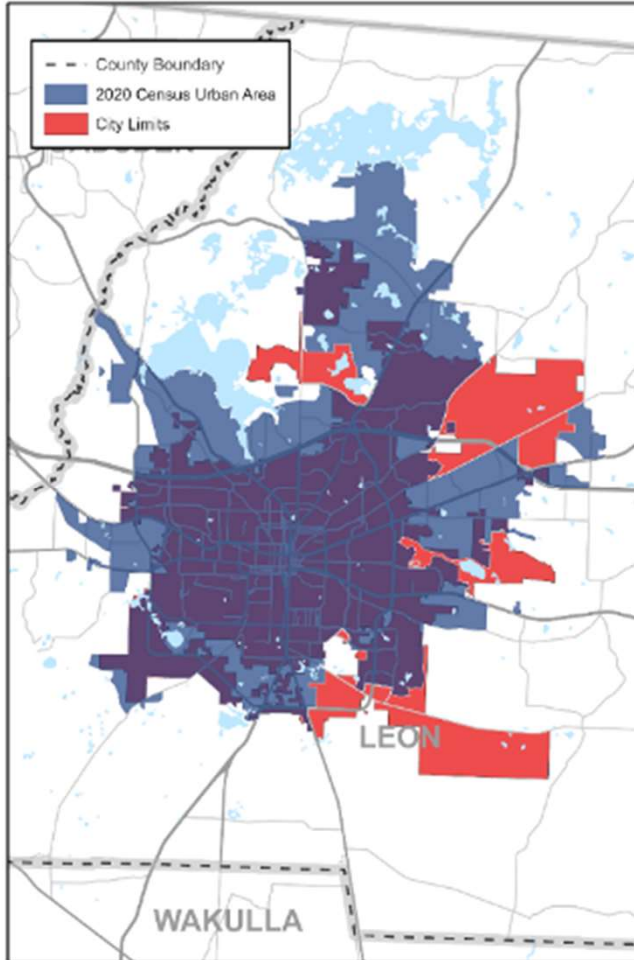
Urban Area Adjustment Considerations



- Include entire municipality.
- Include areas with Urban Characteristics.
- Include large/significant traffic generators.
- Boundary should follow municipal limits or physical features.
- Boundary should be simple without irregularities.
- Boundary should not split roadways or ramps.

The only official requirement is that an adjusted boundary includes the original urban area delineated by the Census Bureau in its entirety.

Include entire Municipality



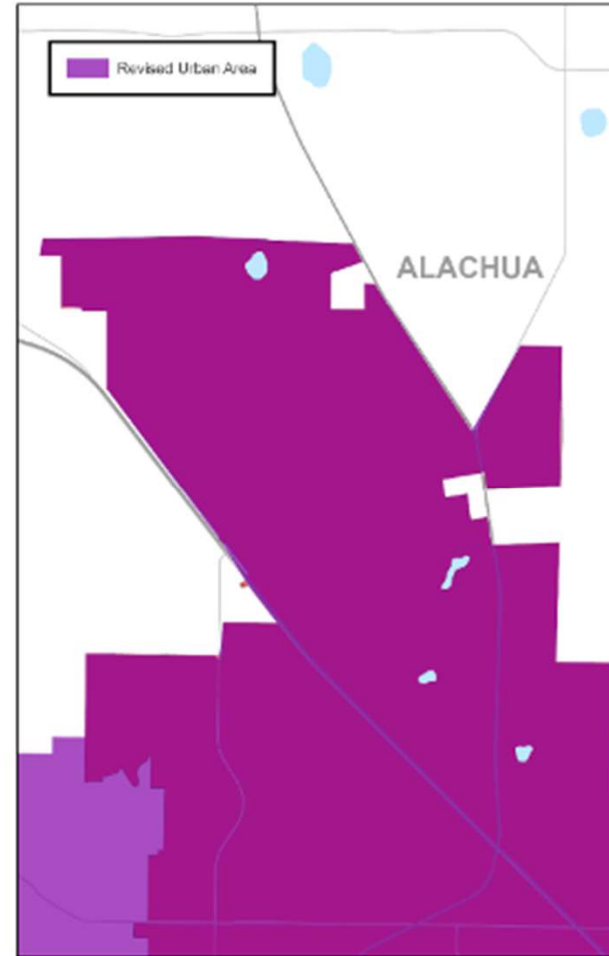
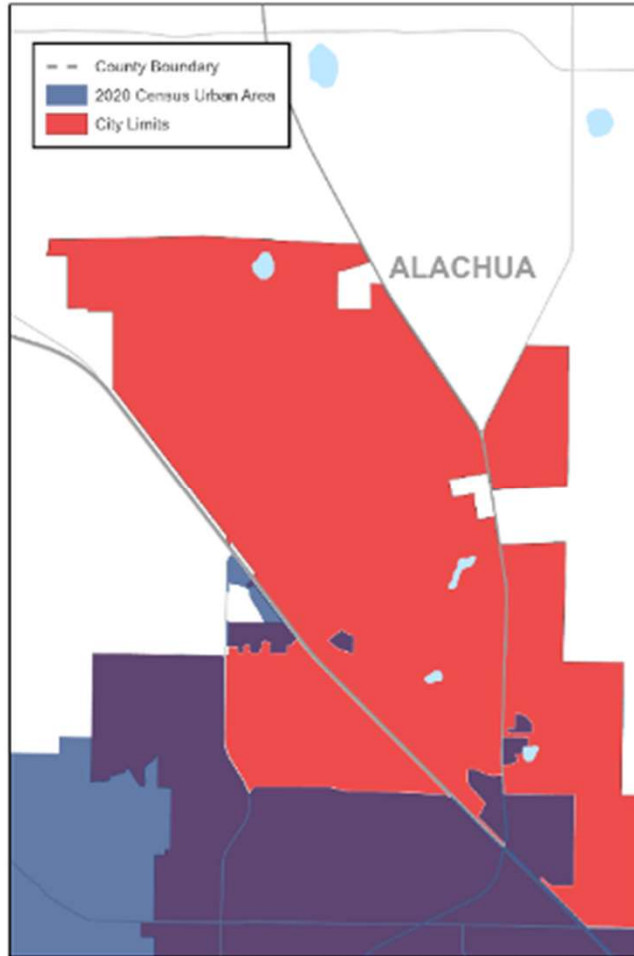
Include areas with Urban Characteristics ✨



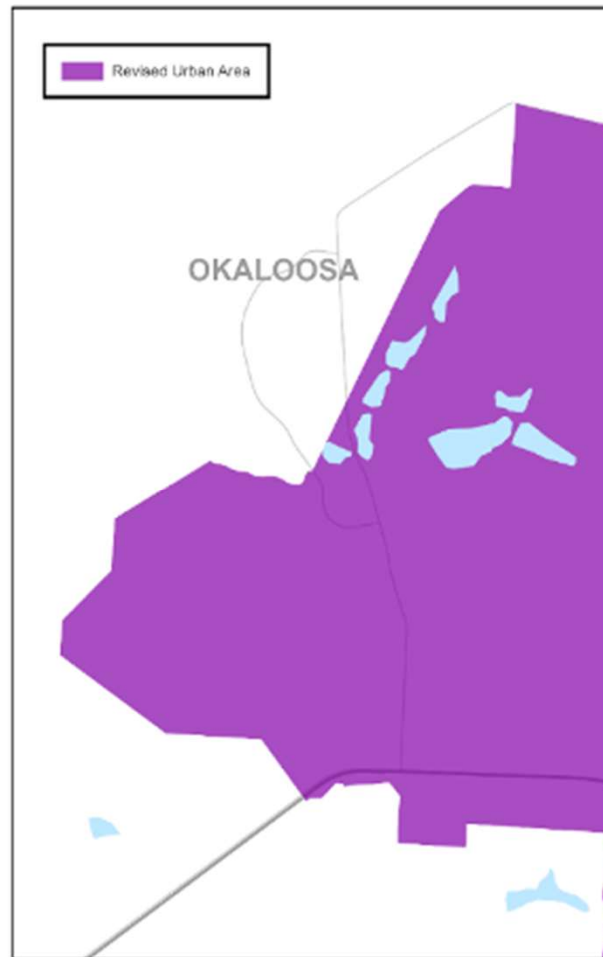
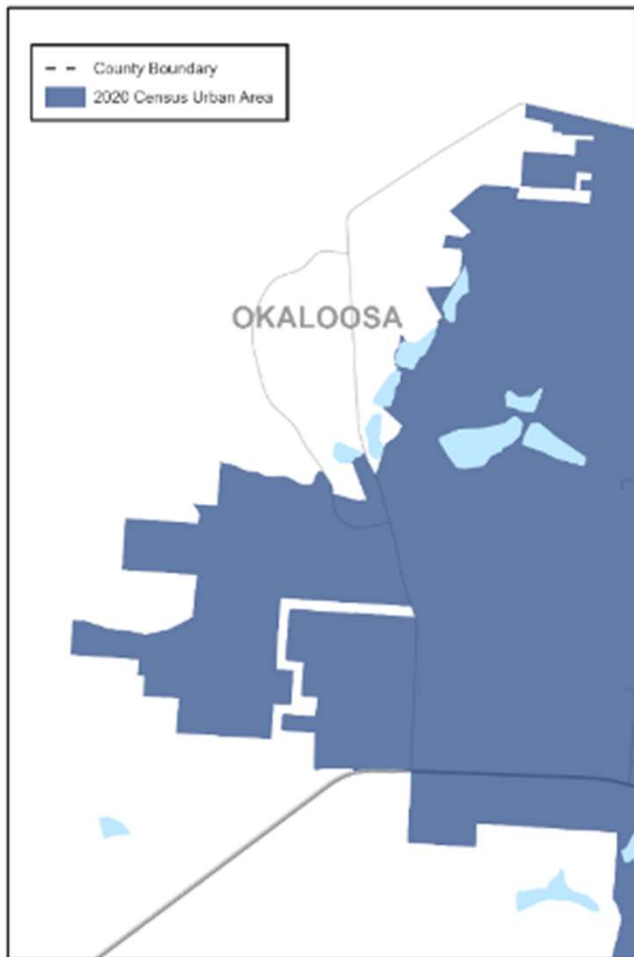
Include large/significant traffic generators



Boundary should follow municipal limits or physical features



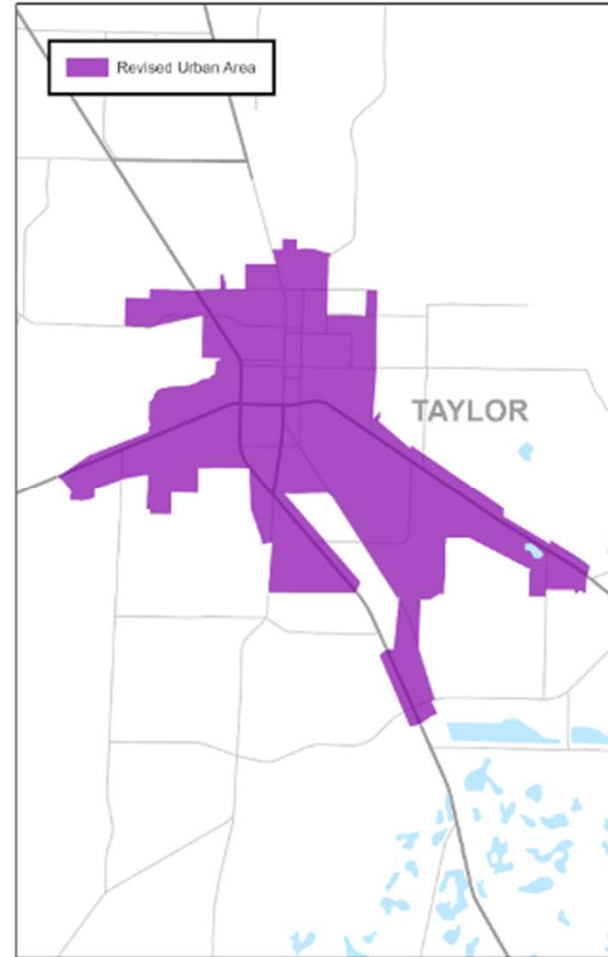
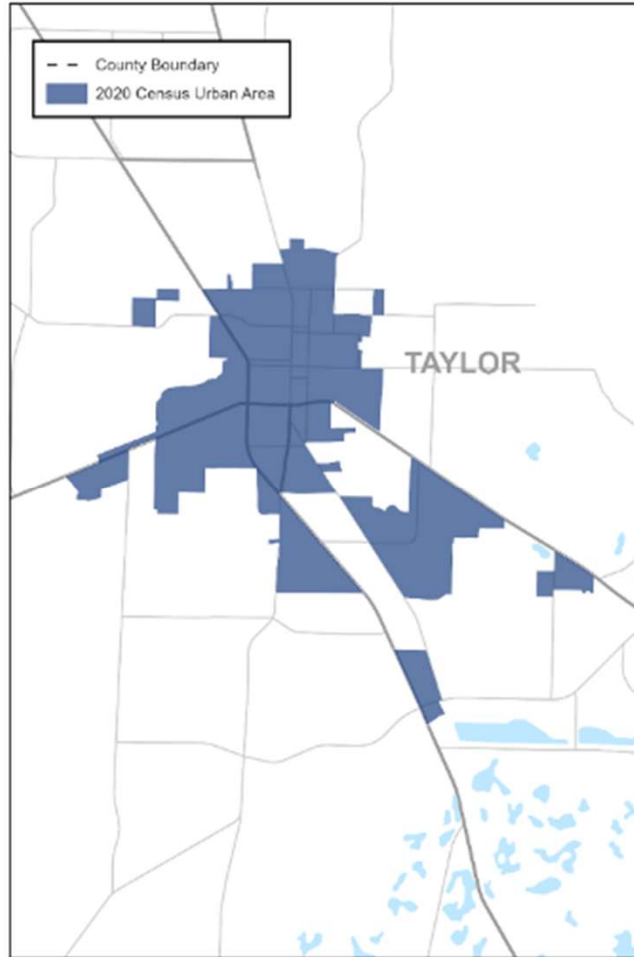
Boundary should be simple without irregularities



Boundary should not split roadways or ramps ✨



▶ Boundary should be contiguous



Functional Classification Guidelines and Considerations



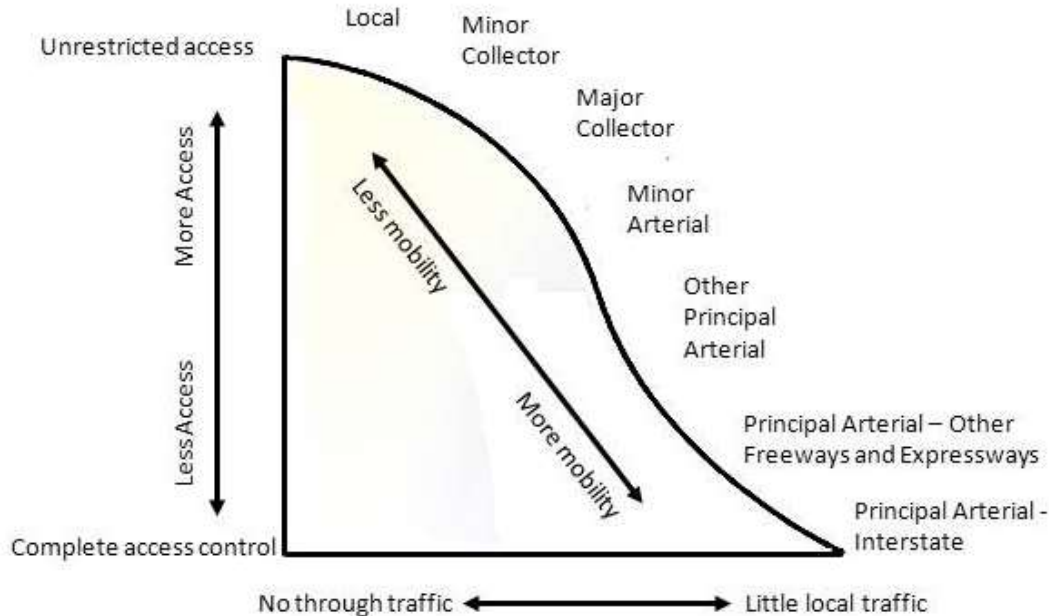
What is Functional Classification



- Process by which streets and highways are grouped into classes, or systems, according to the part that any road plays in serving the flow of trips through a highway network.

A roadway's functional usage is based on Mobility & Accessibility:

- **Mobility** - is measured in respect to ability of traffic to pass through a defined area in a reasonable amount of time.
- **Accessibility** - is measured in terms of the road system's capability to provide access to and between land use activities within a defined area.



Functional Classification Criteria



Types of trips being served

Travel Speeds

Trip Distance

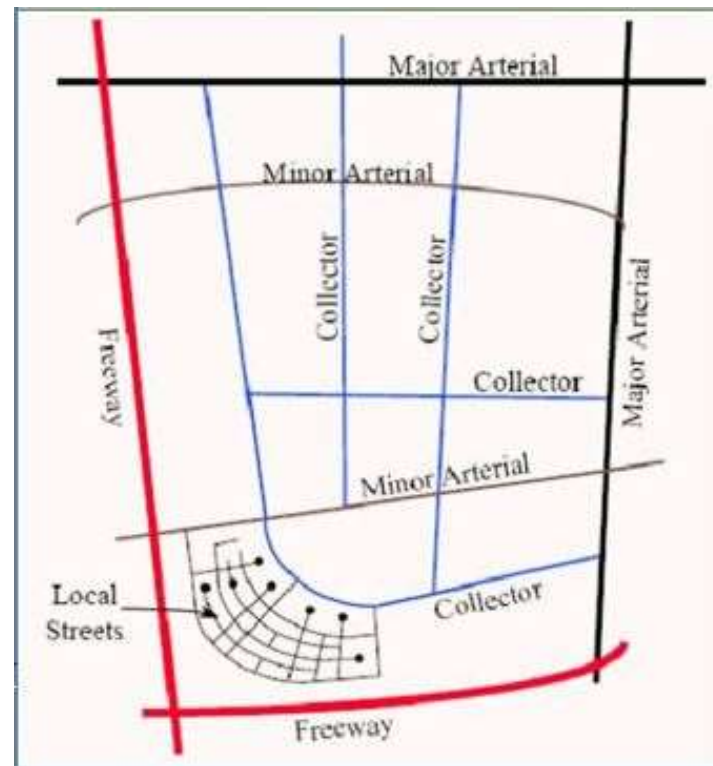
Interval Spacing

Population center thresholds and/or traffic generators being served

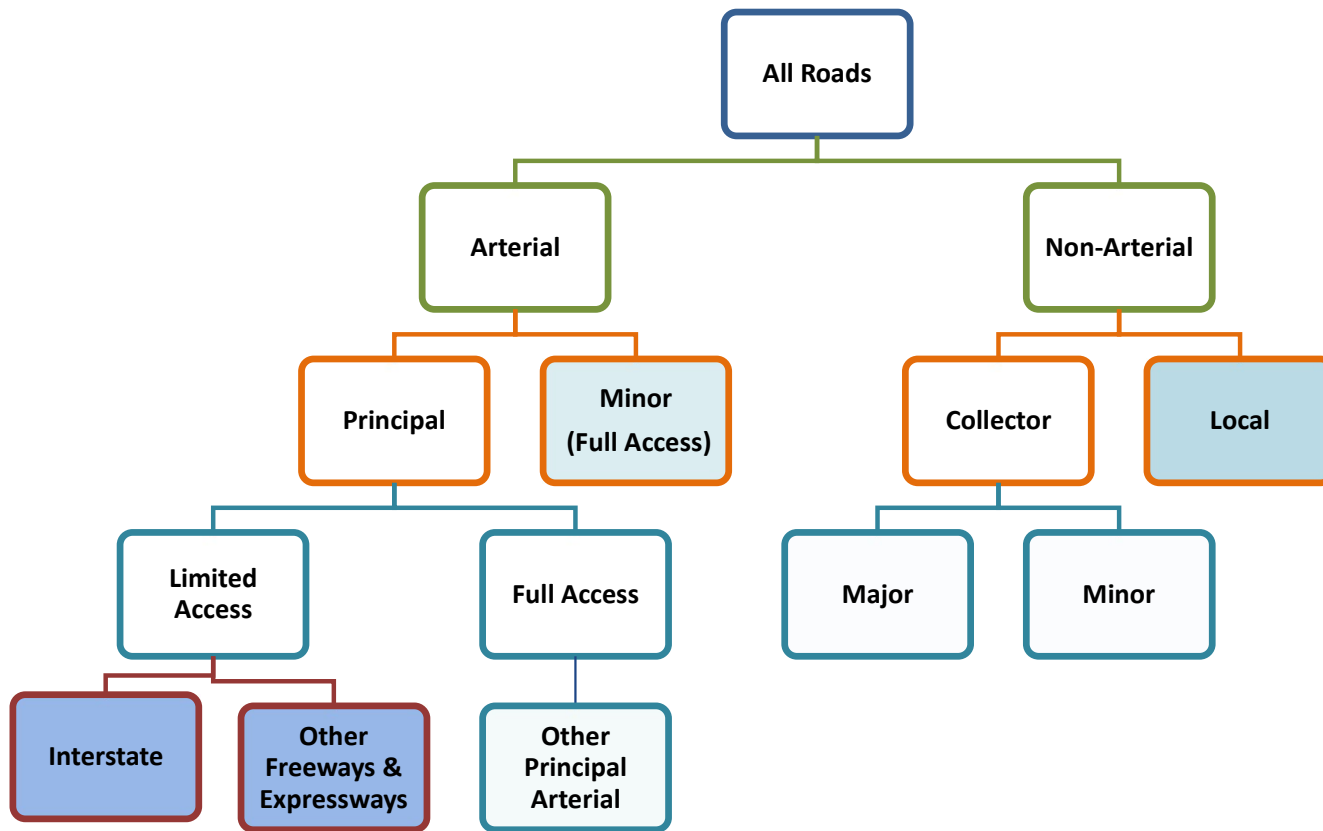
Expected Volume

Network Characteristics

Mileage extents



Functional Classification Decision Tree



How does FDOT use Functional Classification



- Federal-aid highway program funding eligibility.
- Highway Performance Monitoring System (HPMS) federal reporting.
- Planning – Assists in long-range transportation planning by identifying areas that require improvements or construction projects.
- Roadway Design – Guides the design of roadways by defining the appropriate standards for each fun class type.
- Traffic Management – Assists in managing traffic flow and congestion based on fun class.



Functional Classification Influencers



Continuity



Trip Length



Access Points



Speed Limit



Route Spacing



Annual Average Daily Traffic (AADT)



Number of Lanes



Connections to Activity Centers



Functional Classification and Trip Purpose



- FHWA calls for the grouping of similarly ranked travel generators or **trip purposes**.
- 12 types of trip purpose.
- Not necessary for a road to go directly to the main entrance of a traffic generator.

Principal Arterial	2 or more of trip purposes 1-7
Minor Arterial	Only 1 of trip purpose 1-7
Major Collector	1 or more trip purposes 8-10
Minor Collector	Trip purpose 11
Local	Trip purpose 12

Functional Classification: Trip Purpose 1-6



Trip Purpose 1. Travel to and through urbanized areas



Trip Purpose 2. Travel to and through small urban areas



Trip Purpose 3. National defense



Trip Purpose 4. Interstate and regional commerce



Trip Purpose 5. Access to airports, seaports, and major rail terminals or intermodal transfer facilities



Trip Purpose 6. Access to major public facilities

Functional Classification: Trip Purpose 7-12



Trip Purpose 7. Access to minor public facilities



Trip Purpose 8. Interconnection of major thoroughfares



Trip Purpose 9. Interconnection of minor thoroughfares



Trip Purpose 10. Access to concentrated property use areas



Trip Purpose 11. Access to rural diffused property use areas and lower density urban residential and commercial/industrial areas

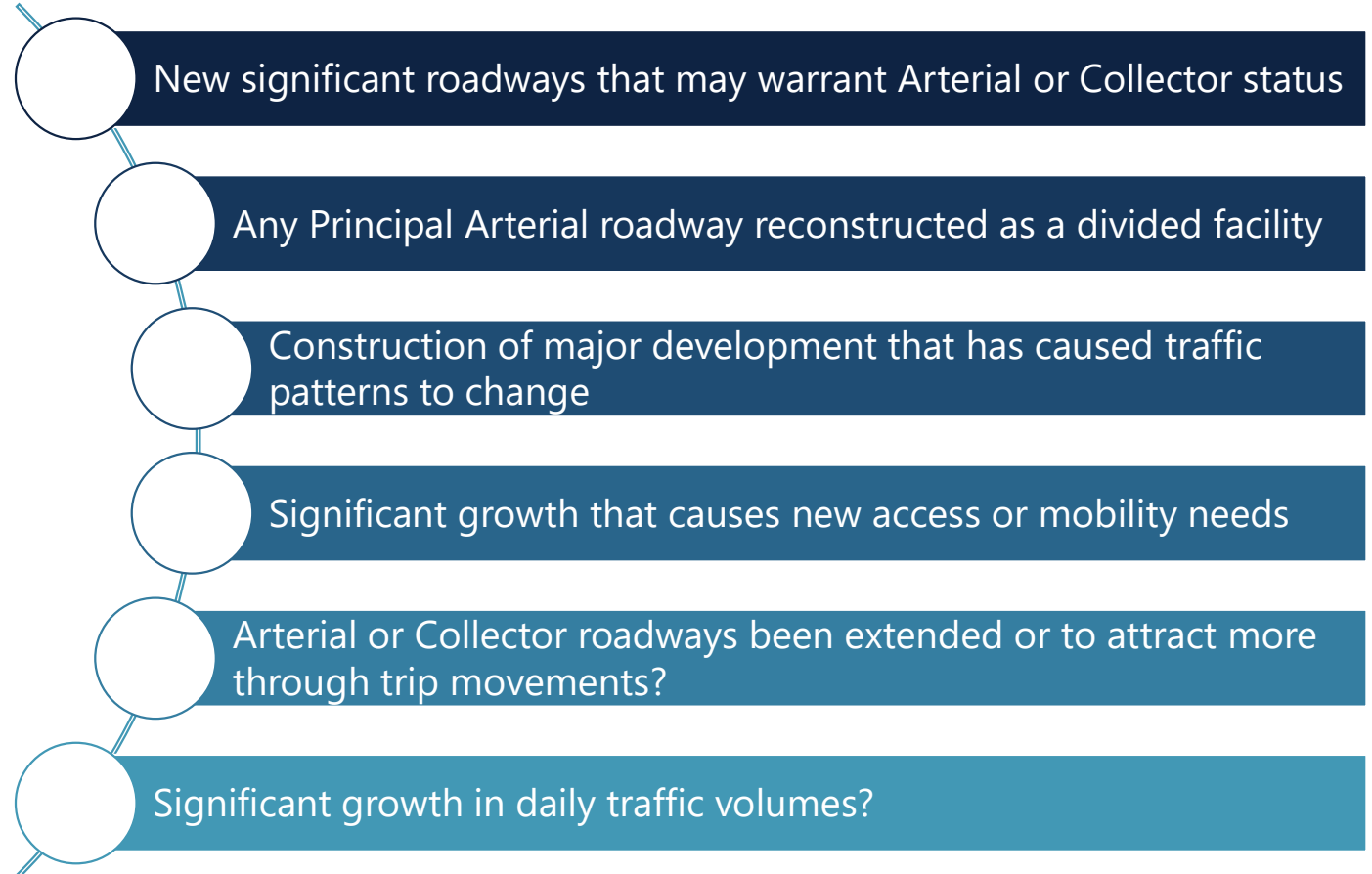


Trip Purpose 12. Local access and circulation

Functional Classification Update Triggers

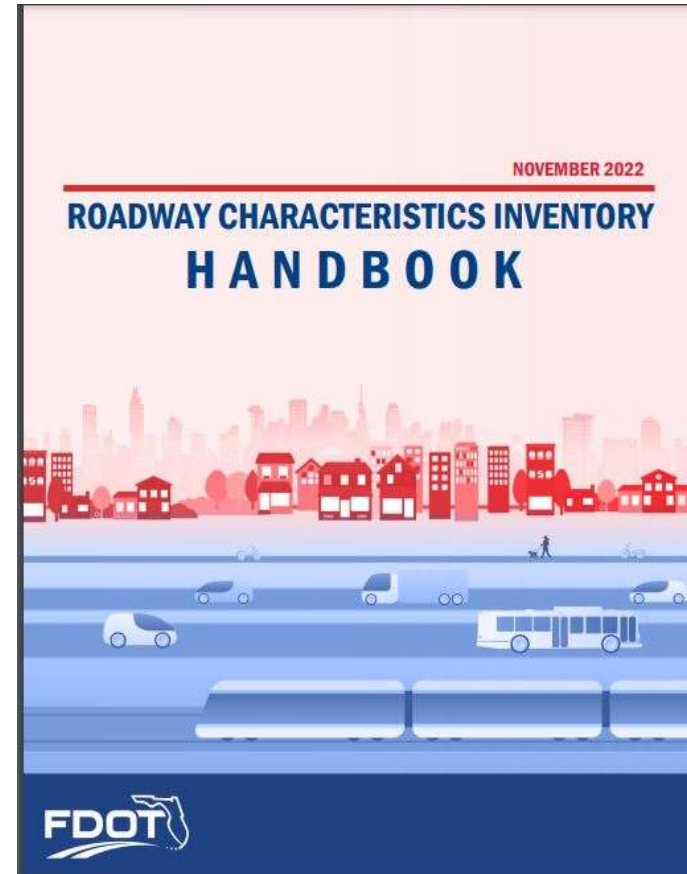


- Functional Classification can change over time.
- Most roadways functional classification remains stable.
- When updating functional classification, the focus should be to identify where a road's function has changed.





- If a road is newly categorized under one of the functional classification categories and was not previously included in the RCI LRS, it should be inventoried according to the guidelines provided in the RCI handbook.
- Be mindful of District resources when inventorying new roadways.





Urban Area Boundary:

Dos  and Don'ts 

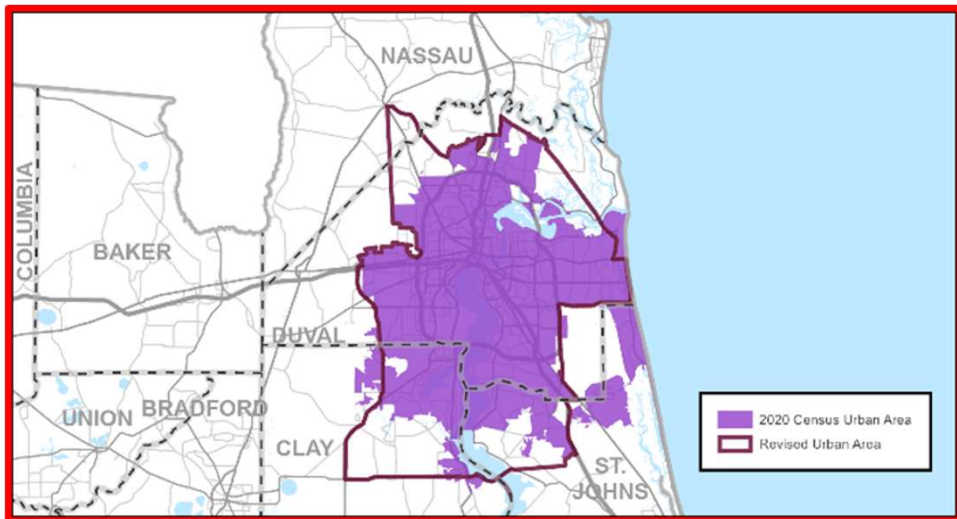


Urban Area Boundary – Do's and Don'ts

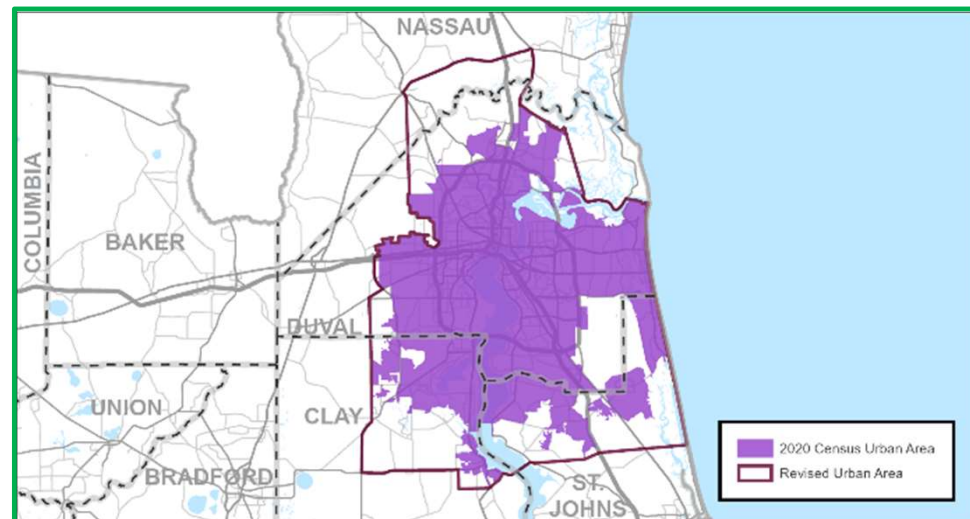


Do's 	Don'ts 
<ul style="list-style-type: none">• At a minimum, confirm Census boundaries are adequate• Urban and rural demarcation defined by function, not urban area boundary• Roads that define a boundary should be consistently urban or rural• At a minimum, areas must encompass entire U.S. Census Bureau urban area• Include entire municipality• Boundaries should not split roadways or ramps.	<ul style="list-style-type: none">• Shrink U.S. Census Bureau urban areas.• Ignore coordination of multi-state urban areas.• Ignore coordination of multi-district urban areas.

Common UA Adjustment Errors

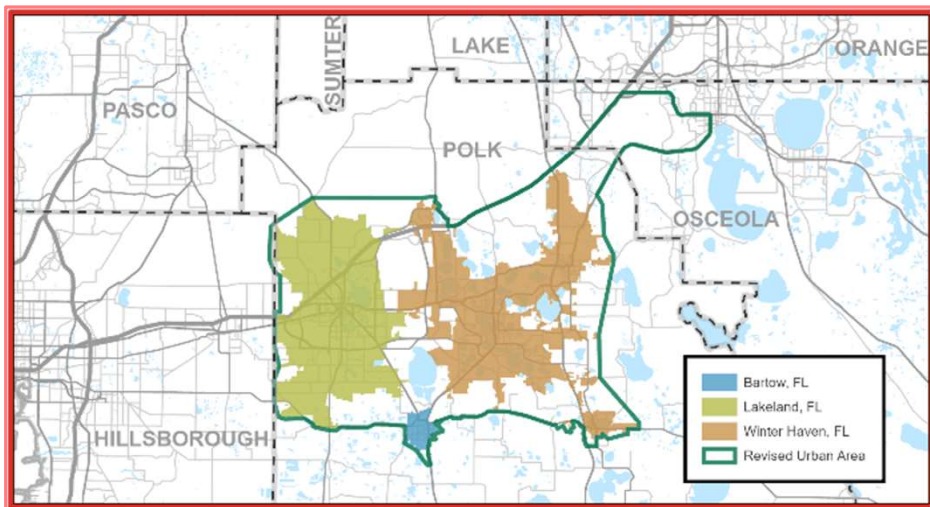


**Adjusted UA missing portion
of Census boundary**

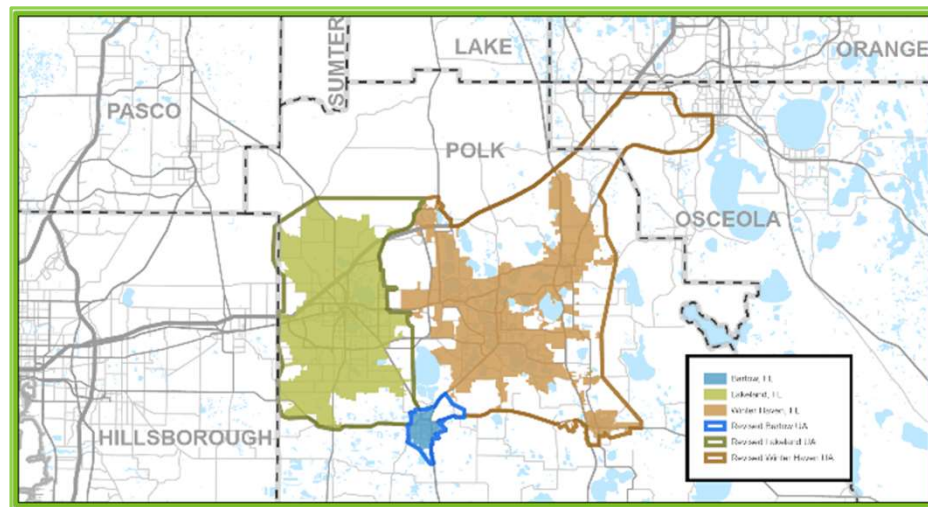


**Adjusted UAs should
encompass entire Census
area at a minimum**

Common UA Adjustment Errors

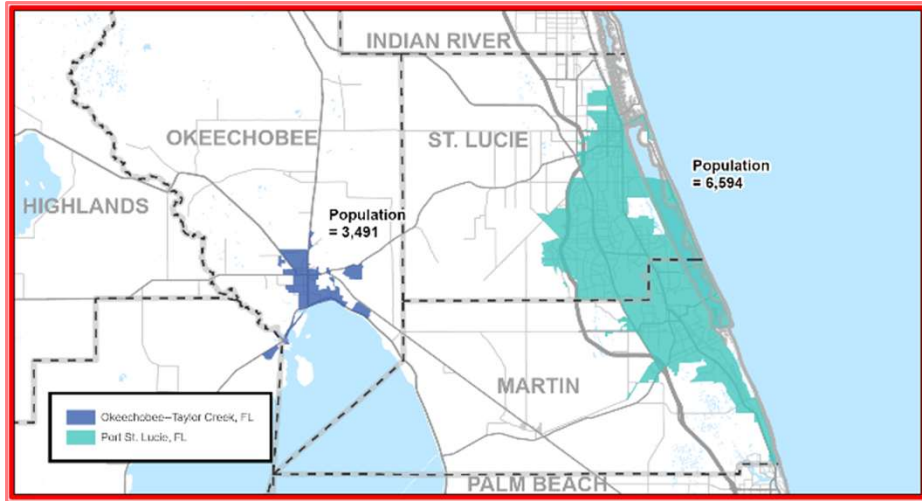


One-to-One Relationship

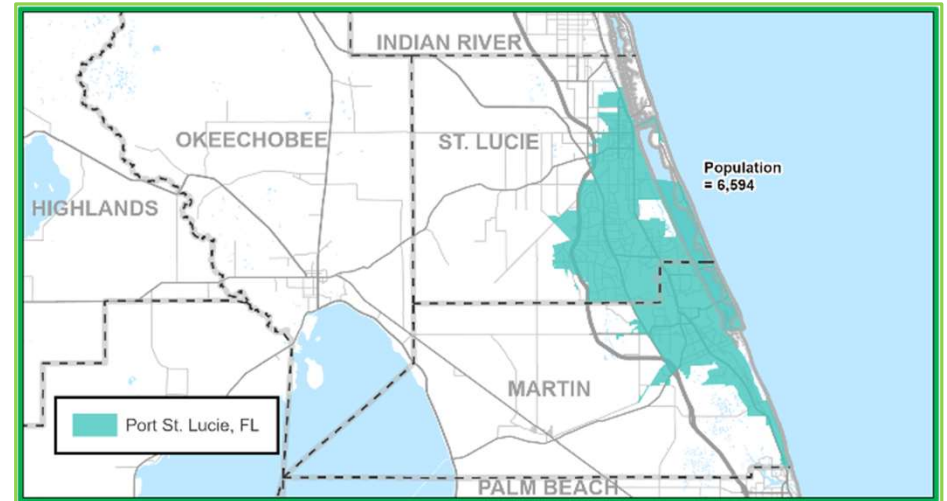


**Multiple Census UAs
should not be combined
to one adjusted UA**

Common UA Adjustment Errors



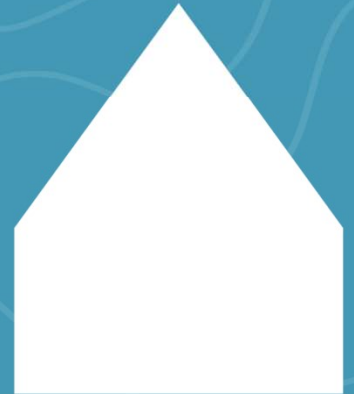
Population too small



**FHWA UAs have
population of at least
5,000**

Functional Classification:

Dos 👍 and Don'ts 👎



Functional Classification – Do's and Don'ts



Do's

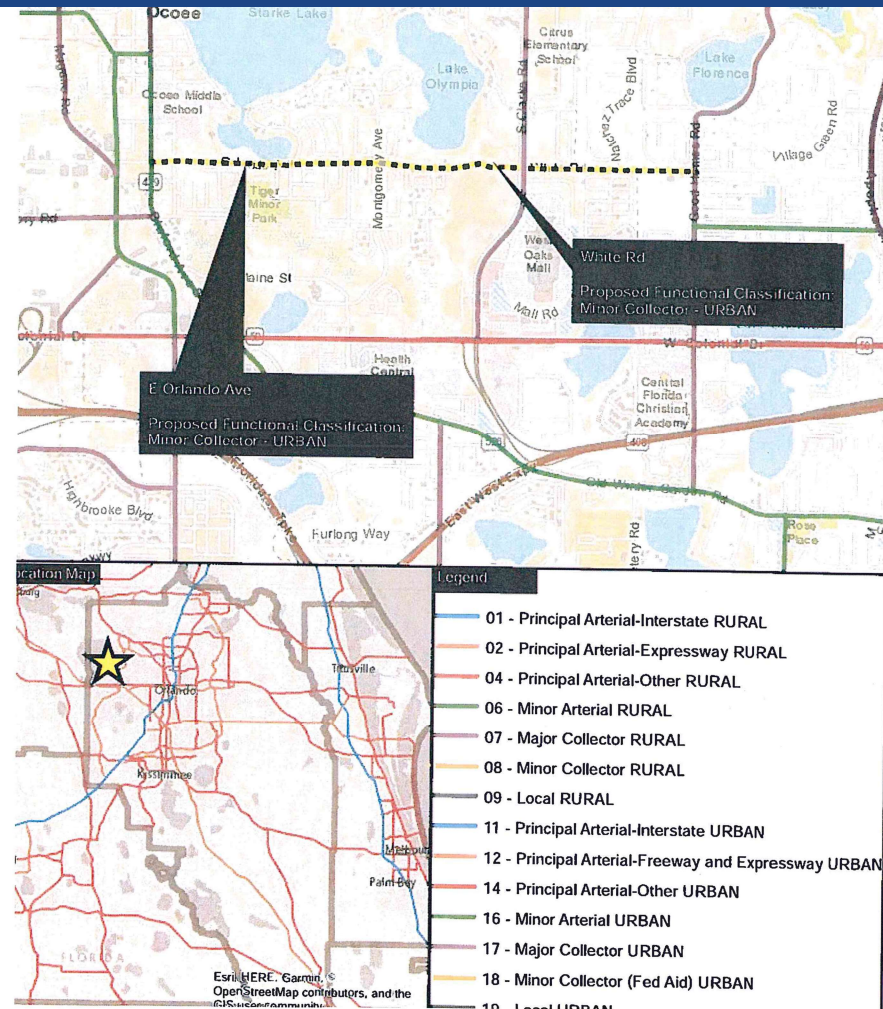
- Common sense should be your guide.
- Look at overall distribution and spacing when in doubt.
- Be consistent with community standards.
- Include Annual Average Daily Traffic (AADT) when submitting functional classification applications.
- Coordinate with other States/Districts/Counties to ensure functional classification at State/District/County lines are consistent.
- RCI Features 121 and 124 must be updated whenever changes occur, and they must complement each other; Feature 121 directly affects Feature 112 (federal systems); Districts should request TDA to update Feature 112.

Don'ts

- If the difference in length between the digitized and RCI alignments is greater than or equal 0.100 miles or 5% of the RCI length, Districts should provide marked-up aerials displaying the correct alignment for comparison with the RCI LRS.
- If a realignment of a roadway has not been digitized into the RCI LRS, the correct realignment should be shown on a copy of the latest aerial image. Districts should make sure the location of the realignment can be determined within the county by adding discerning features. RCI feature 140 (section status exception) must be coded correctly, and the total realignment length must be correctly noted in RCI. Feature 138 (roadway realignment) must be completed.
- Problems will occur if two or more section numbers are assigned to the same section of roadway or to overlapping roadways. If this is determined to be an exception, code it in properly. If not, the problem will need to be corrected by field or map review.

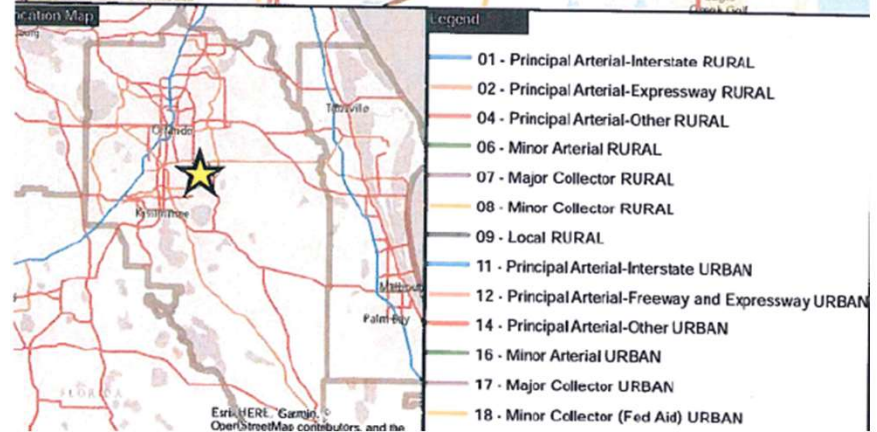
Infrastructure Improvements

- **Roadway Name:** E Orlando Ave/White Road
- **District:** 5
- **Corridor Length:** 2.377 mile
- **Number of Lanes:** 2
- **AADT:** 8,698 (2017)
- **Proposed FC:** Urban Minor Collector
- **Earlier FC:** Urban Local
- **Justification:** Meets Trip Purpose 9, 11. Secondary access to school, Parallel relief road for SR 438 and SR 50.



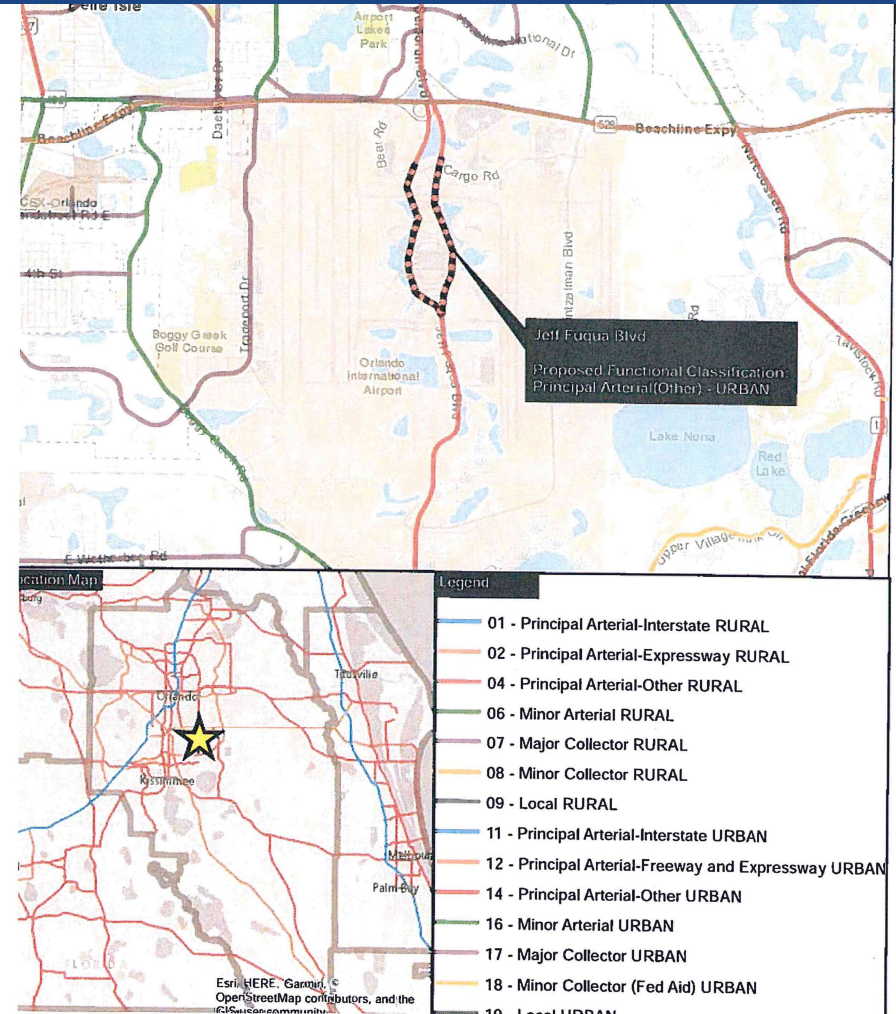
Multimodal Purpose

- **Roadway Name:** Heintzelman Blvd
- **District:** 5
- **Corridor Length:** 4.659 mile
- **Number of Lanes:** 2
- **AADT:** 8,572 (2017)
- **Proposed FC:** Urban Minor Arterial
- **Earlier FC:** Urban Local
- **Justification:** Meets Trip Purpose 8. Provides direct access to Orlando International Airport.



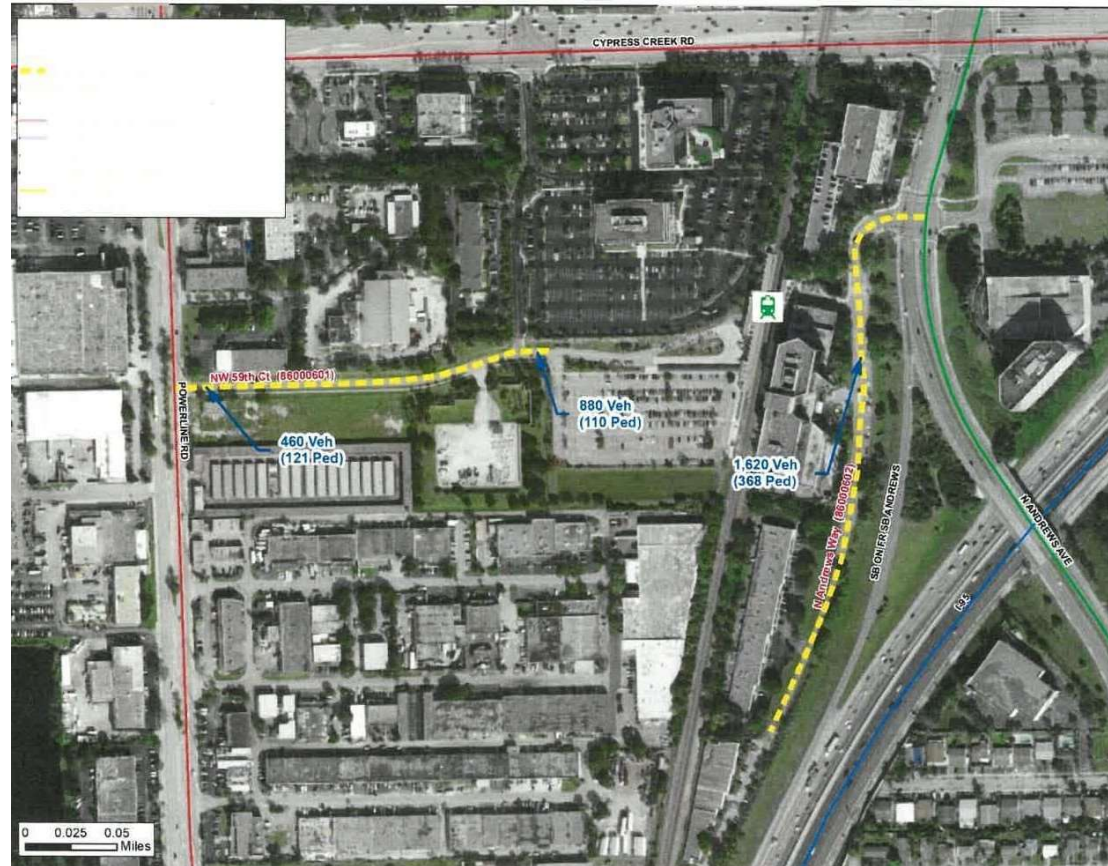
Extension of Prior Section

- **Roadway Name:** Jeff Fuqua Blvd
- **District:** 5
- **Corridor Length:** 1.471 mile
- **Number of Lanes:** 6
- **AADT:** 36,561 (2017)
- **Proposed FC:** Urban Principal Arterial - Other
- **Earlier FC:** Urban Local
- **Justification:** Meets Trip Purpose 5, 8. Extension of SR 436 from north connecting to Jeff Fuqua Blvd in south



Land Use

- **Roadway Name:** NW 59 CT
- **District:** 4
- **Corridor Length:** 0.21 mile
- **Number of Lanes:** 2
- **AADT:** 460 (2018)
- **Proposed FC:** Urban Minor Collector
- **Earlier FC:** Urban Local
- **Justification:** Multimodal connection for pedestrian to Tri-Rail station, meets criteria: less than 3/4th of a mile, connected to a large trip generator.



2020 Urban Area Boundary and Functional Classification Hub Site

Urban Area Boundary and Functional Classification Data Hub

This website will host the District Urban Boundary and Functional Classification data to be adjusted. FDOT, Local Entities, and MPOs are now adjusting these boundaries and functional classifications. May 31, 2024, is the deadline for Districts to submit their adjusted urban area boundaries to the TDA Office. Functional Classification modifications are preferred to be completed simultaneously but may be submitted later (i.e., after FHWA approves the adjusted urban area boundaries).

Get the Data

- Urban Boundary and Functional Classification Update Process
- UABFC Process Story Map
- 2010/2020 Census Comparison
- 2020 Census by County
- Functional Classification

Adjusted Urban Area Boundary and Functional Classification Work Flow

- Acquire Data
- Adjust Data
- Review and Submit
- Approval

Submit your Adjusted Urban Area Boundary and Functional Classification data below:

Upload a file

Additional Data Contact Us

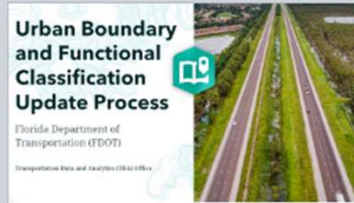
Transportation Data & Analytics (TDA) Office - Map Data Contact FDOT

- Hub site hosts the 2020 Urban Area Boundary and Functional Classification (UABFC) data to be adjusted.
- Viewable by the public.
- 2010 Urban Areas, Urban Clusters, Urbanized Areas are provided as reference.
- Adjusted data to be submitted through Hub site.
- Provides guidance from FDOT, U.S. Census Bureau, and the Federal Highway Administration (FHWA).

Available Data on the UABFC Hub Site

Get the Data

To follow are the various resources available to FDOT Districts and our Local partners. The 2010 Census Maps provide a road map for where we are headed. The Story Map details the how, why, and when. The adjusted Urban Boundaries and Functional Classification data will be available soon.



[UABFC Process Story Map](#)

Adjusted Urban Area Boundary & Functional Class process summary.

[Details](#)

[View](#)



[2010/2020 Census Comparison](#)

View and compare the 2010 to 2020 Census Urban Area population.

[Download](#)

[View](#)

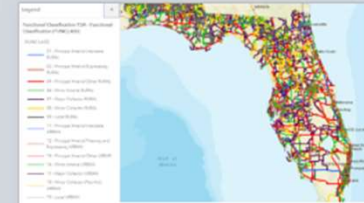


[2020 Census by County](#)

View the 2020 Census Urban Area population that is within each county.

[Details](#)

[View](#)



[Functional Classification](#)

The Official FHWA approved Functional Classification dataset.

[Download](#)

[View](#)

2010/2020 UABFC Comparison Tool



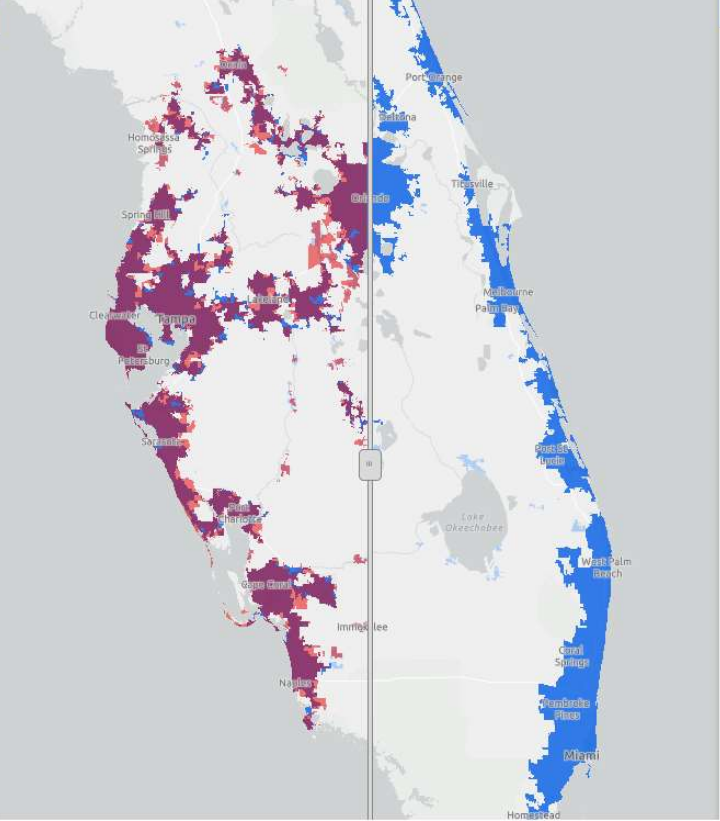
FDOT U.S. Census Urban Areas 2010 and 2020



Legend

Functional Classification TDA

- 01 - Principal Arterial-Interstate RURAL
- 02 - Principal Arterial-Expressway RURAL
- 04 - Principal Arterial-Other RURAL
- 06 - Minor Arterial RURAL
- 07 - Major Collector RURAL
- 08 - Minor Collector RURAL
- 09 - Local RURAL
- 11 - Principal Arterial-Interstate URBAN
- 12 - Principal Arterial-Freeway and Expressway URBAN
- 14 - Principal Arterial-Other URBAN
- 16 - Minor Arterial URBAN
- 17 - Major Collector URBAN
- 18 - Minor Collector (Fed Aid) URBAN
- 19 - Local URBAN



Legend

- 2020 U.S. Census Urban Area Boundaries
- 2010 U.S. Census Urbanized Area
- 2010 U.S. Census Urban Area Clusters

UABFC Adjustment Workflow and Data Submission

Adjusted Urban Area Boundary and Functional Classification Work Flow

To follow is how the Department and it's local partners will work together to adjust the Urban Area Boundaries and Functional Classifications for the State.



Acquire Data

TDA to Compile and Resolve Conflicts.



Adjust Data

FDOT Districts, MPOs and Locals identify edits needed.



Review and Submit

TDA to review and send to FHWA for approval.



Approval

FHWA to review and approve submittals.



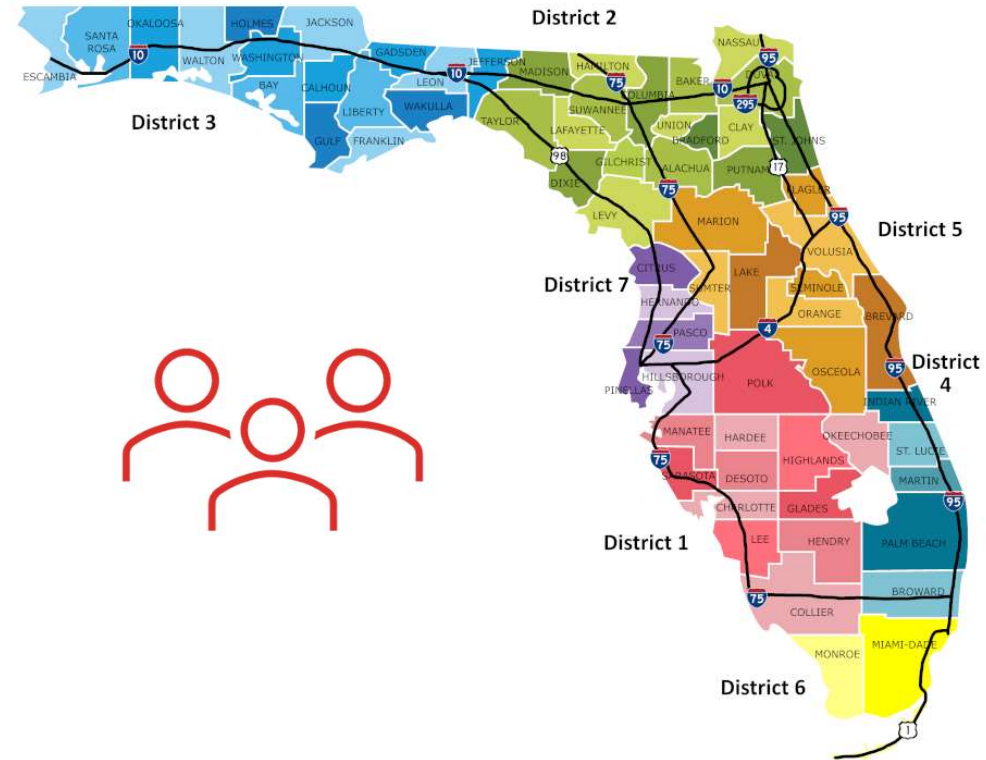
Submit your Adjusted Urban Area Boundary and Functional Classification data below:

Upload a file

UABFC Adjustment Workflow and Data Submission

Data to be submitted by these users only:

- **District 1** – Kyle Purvis, Joel Graeff.
- **District 2** – David Tyler, Justin Bellot, Brian Austin.
- **District 3** – Geoff Hynes, Mark Brock, Bryant Paulk, Corey Webb, Cindy Boyette.
- **District 4** – Kara Schwartz-DiMaina.
- **District 5** – Alice Giuliani, Cheryl Burke, Jim Wood, Clif Tate, Jason Learned.
- **District 6** – Ana Calleja, Ken Jeffries.
- **District 7** – Sherry Melaragno, Anita Montjoy, Brian Hunter, Andrew Tyrell.
- **Turnpike** – Juan Echevarria.





2020 URBAN AREA BOUNDARY AND FUNCTIONAL CLASSIFICATION UPDATE

Urban Areas represent densely developed areas based on population density. The U.S. Census Bureau revises these urban areas every 10 years based on population counts from the decennial census. The Federal Highway Administration (FHWA) gives state DOTs the opportunity to adjust and revise these boundaries to be more consistent with transportation planning needs. Along with the Urban Area Boundary (UAB) review and adjustment process, FHWA also recommends that states review the functional classification of their roadway system. This one-pager provides a timeline, roles, and responsibilities for FDOT and local Entities in adjusting Urban Boundaries and Functional Classification.

78
Urban Areas

91.6%
Population in Urban Areas

14.9%
Land Area is Urban

Source: U.S. Census Bureau 2020

IMPORTANCE

UAB designations are critical to many federal transportation and funding programs and support the determination of Federal-Aid eligibility for roadways, bridge, and transit funding. Key programs impacted by UAB designations include:

- Surface Transportation Block Grant Program (STBG) formerly STP
- Local Agency Programs (EAP)
- Federal-Share of Administration Agreements (FSA)
- National Highway System
- Transportation Management Areas (TMA)
- Metropolitan Planning Organizations (MPO)

FINALIZED U.S. CENSUS BUREAU URBAN AREA CRITERIA CHANGES

The U.S. Census Bureau published Federal Register, Vol. 87, No. 57 proposing new criteria for defining urban areas based on the results of the 2020 decennial census. Major changes to 2010 criteria are highlighted below:

Change minimum threshold for an urban area from 2,500 people to 5,000 people.	Adoption of housing unit density instead of population density.	No distinction between types of urban areas (urban cluster vs. urban area). All qualifying.
---	---	---

ROLES AND RESPONSIBILITIES

The Urban Area Boundary (UAB) and Functional Classification (FC) update process is conducted in coordination with FHWA, FDOT, MPOs, and local entities. The roles and responsibilities are outlined below:

Federal Highway Administration (FHWA)

- Provides UAB/FC guidelines and list of the Act.
- Reviews and approves final adjusted UABs and FC updates made by FDOT and local entities.

2020 Urban Area Boundary and Functional Classification Fact Sheet

<p>2024</p> <ul style="list-style-type: none"> • Classification review • Before October 1, 2023: Metropolitan Planning Funds (MPL) formula • May 2024: FDOT and FHWA finalize adjustments to UABs • December 2024: Adjusted UAB and Updated Functional Classification integrated with FDOT Business Systems 	<p>2025</p> <ul style="list-style-type: none"> • January 2024: MPOs submit Approval Form and MPO Boundary Maps • Late 2024/Early 2025: New TMA membership at Congestion Management Process (CMP) within 18 months of designation • April 2025: FDOT CD submits final data to FHWA <p>2026</p> <ul style="list-style-type: none"> • December 2026: 2050 Long Range Transportation Plan (L RTP) and Transportation Improvement Plans (TIP 5) Submissions 	<p>MPOs</p> <ul style="list-style-type: none"> • Coordinates proposed UAB adjustments and FC updates with planning partners and acquires signatures from local agencies. • Reviews proposed changes of UAB maps, data, and FC updates to FDOT CD forms. <p>Metropolitan Transportation Planning Organizations (MPO/TPO)</p> <ul style="list-style-type: none"> • Updates its Metropolitan Planning Area (MPA) boundary map in consultation with District. • Updates its Approval Form Plan, which is the MPO's voting membership structure. • Coordinates with local governments and the District on the process to adjust the FC of roadways within the MPO area.
--	--	---

- [2020 UABFC Process Web Site](#)
- [FDOT UABFC Hub Site](#)
- [FDOT 2010 Urban Boundary and Functional Classification Maps](#)
- [FDOT Urban Boundary and Functional Classification Handbook](#)
- [FDOT 2020 UABFC Info Fact Sheet \(PDF\)](#)
- [FHWA 2013 Edition - Highway Functional Classification Concepts, Criteria and Procedures](#)
- [FHWA 2020 Estimated Schedule of Activities](#)
- [FHWA Frequently Asked Questions](#)
- [US Census 2020 Final Urban Area Criteria](#)

Questions?

For Data Questions:

Transportation Data and Analytics Office

Joel Worrell

Transportation Data Inventory Manager

605 Suwannee Street

Tallahassee, FL 32399

Phone: (850) 414-4715

Email: Joel.Worrell@dot.state.fl.us

<https://www.fdot.gov/statistics/>

Jerry Scott

Multimodal Data System Coordinator

Phone: (850) 414-4714

Email: Jerry.Scott@dot.state.fl.us

For Apportionment

Questions:

Office of Policy Planning

Mike Neidhart, PhD, AICP

**Metropolitan Planning
Administrator**

605 Suwannee Street

Tallahassee, FL 32399

Phone: (850) 414-4905

Email: Mike.Neidhart@dot.state.fl.us

