

FEATURE 248

OUTFALL DITCHES

Roadway Side	Allows Tie	LRS Package	Feature Type	Interlocking	Secured
R/L	No	No	Point	No	Yes
Responsible Party for Data Collection		District Office of Maintenance			

Definition/Background: An outfall ditch transfers roadway water drainage to off-roadway locations such as: creeks, rivers, channels, and other mitigation sites.

Notes the length of the outfall ditches used and maintained by the Department. Also notes the type of maintenance work that needs to be performed for proper operation of the facility. In some cases, the Department does not own the outfall ditch right-of-way and an easement agreement exists with the landowner.

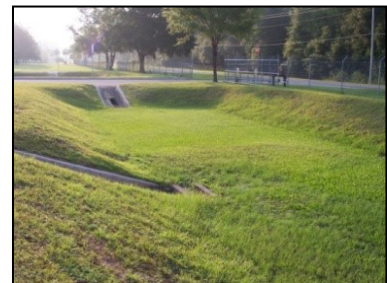
Only the beginning milepoint should be entered. If the below characteristics are located at a rest area, ramp, or other applicable sub-section, they are to be inventoried against the applicable sub-section number.

ODITHAND | OUTFALL DITCH BY HAND LENGTH

HPMS	MIRE	Who/What uses this Information	Required For	Offset Direction	Offset Distance
N/A	N/A	Maintenance	All Active On and Active Exclusive roads, including managed lanes.	N/A	N/A

How to Gather this Data: Code the length, to the nearest foot, of the outfall ditch. This is a hand labor cleaning. It cannot be accomplished by mechanical means.

Value for Outfall Ditch by Hand Length: 4 Bytes: XXXX

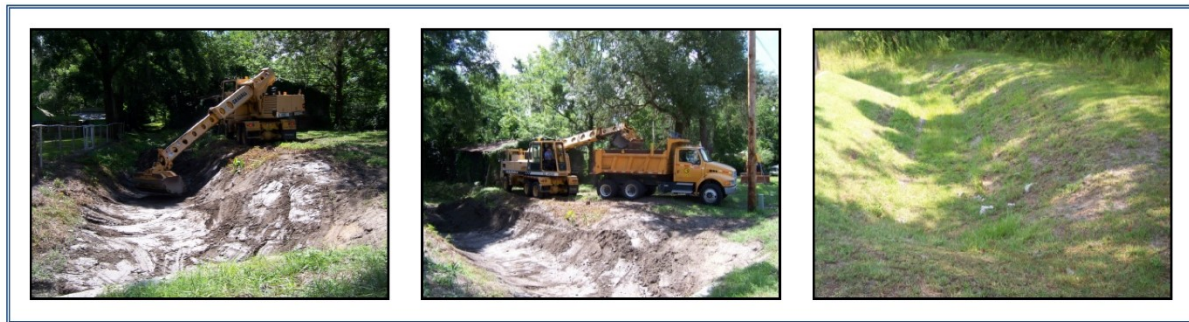


ODITHAUL | OUTFALL DITCH BY HAULED LENGTH

HPMS	MIRE	Who/What uses this Information	Required For	Offset Direction	Offset Distance
N/A	N/A	Maintenance	All Active On and Active Exclusive roads, including managed lanes.	N/A	N/A

How to Gather this Data: Code the length, to the nearest foot, of the outfall ditch. This work is accomplished by mechanical means with the excess material hauled away from the worksite.

Value for Outfall Ditch by Hauled Length: 4 Bytes: XXXX



ODITPAVE | OUTFALL DITCH BY LENGTH PAVED

HPMS	MIRE	Who/What uses this Information	Required For	Offset Direction	Offset Distance
N/A	N/A	Maintenance	All Active On and Active Exclusive roads, including managed lanes.	N/A	N/A

How to Gather this Data: Code the length, to the nearest foot, of the paved outfall ditch.

Value for Outfall Ditch by Length Paved: 4 Bytes: XXXX



ODITPIPE | OUTFALL DITCH BY LENGTH PIPED

HPMS	MIRE	Who/What uses this Information	Required For	Offset Direction	Offset Distance
N/A	N/A	Maintenance	All Active On and Active Exclusive roads, including managed lanes.	N/A	N/A

How to Gather this Data: Code the length, to the nearest foot, of the piped outfall ditch.

Value for Outfall Ditch by Length Piped: 4 Bytes: XXXX



ODITSPR | OUTFALL DITCH SPREAD LENGTH

HPMS	MIRE	Who/What uses this Information	Required For	Offset Direction	Offset Distance
N/A	N/A	Maintenance	All Active On and Active Exclusive roads, including managed lanes.	N/A	N/A

How to Gather this Data: Code the length, to the nearest foot, of work to be performed by mechanical means to clean an outfall ditch and spread the excess material.

Value for Outfall Ditch Spread Length: 4 Bytes: XXXX

